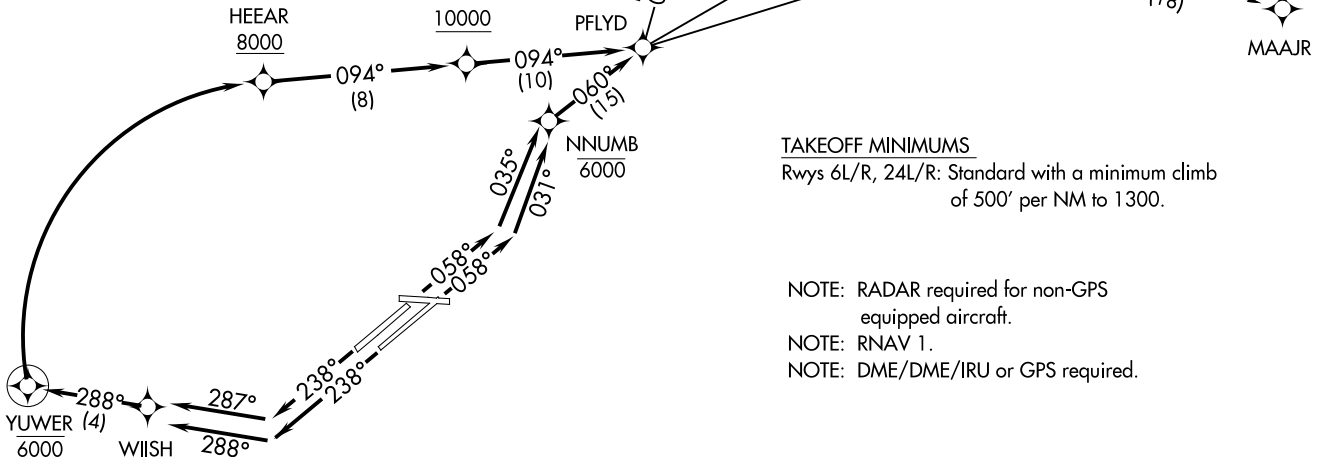


PFLYD ONE DEPARTURE (RNAV)  
(PFLYD1.PFLYD) 19JUL18

**TOP ALTITUDE:  
14000**

D-ATIS  
132.375  
CLNC DEL  
125.05 273.45  
CPDLC  
GND CON  
121.7 273.45  
CLEVELAND TOWER  
124.5 273.45  
CLEVELAND APP CON  
124.0 346.325  
CLEVELAND DEP CON  
128.25 346.325



TAKEOFF MINIMUMS  
Rwys 6L/R, 24L/R: Standard with a minimum climb of 500' per NM to 1300.

- NOTE: RADAR required for non-GPS equipped aircraft.
- NOTE: RNAV 1.
- NOTE: DME/DME/IRU or GPS required.

**(NARRATIVE ON FOLLOWING PAGE)**

NOTE: Chart not to scale.

CLEVELAND, OHIO  
CLEVELAND-HOPKINS INTL (CLE)  
(PFLYD1.PFLYD) 19JUL18

(PFLYD1.PFLYD) 20142  
PFLYD ONE DEPARTURE (RNAV)

A-84 (FAA)  
CLEVELAND-HOPKINS INTL (CLE)  
CLEVELAND, OHIO

# PFLYD ONE DEPARTURE (RNAV)



## DEPARTURE ROUTE DESCRIPTION

TAKEOFF RUNWAY 06L: Climb on heading 058° to intercept course 035° to cross NNUMB at or below 6000, then on track 060° to PFLYD, thence....

TAKEOFF RUNWAY 06R: Climb on heading 058° to intercept course 031° to cross NNUMB at or below 6000, then on track 060° to PFLYD, thence....

TAKEOFF RUNWAY 24L: Climb on heading 238° to intercept course 288° to WIISH, then on track 288° to cross YUWER at or below 6000, then right turn direct to cross HEEAR at or above 8000, then on track 094° to cross SYYDD at or above 10000, then on track 094° to PFLYD, thence....

TAKEOFF RUNWAY 24R: Climb on heading 238° to intercept course 287° to WIISH, then on track 288° to cross YUWER at or below 6000, then right turn direct to cross HEEAR at or above 8000, then on track 094° to cross SYYDD at or above 10000, then on track 094° to PFLYD, thence....

....on (Transition). Maintain 14000, expect filed altitude ten minutes after departure.

DORET TRANSITION (PFLYD1.DORET)

DUUKR TRANSITION (PFLYD1.DUUKR)

JASEE TRANSITION (PFLYD1.JASEE)

MAAJR TRANSITION (PFLYD1.MAAJR)

PATRC TRANSITION (PFLYD1.PATRC)

EC-2, 30 DEC 2021 to 27 JAN 2022

EC-2, 30 DEC 2021 to 27 JAN 2022