

CLEVELAND, OHIO

AL-84 (FAA)

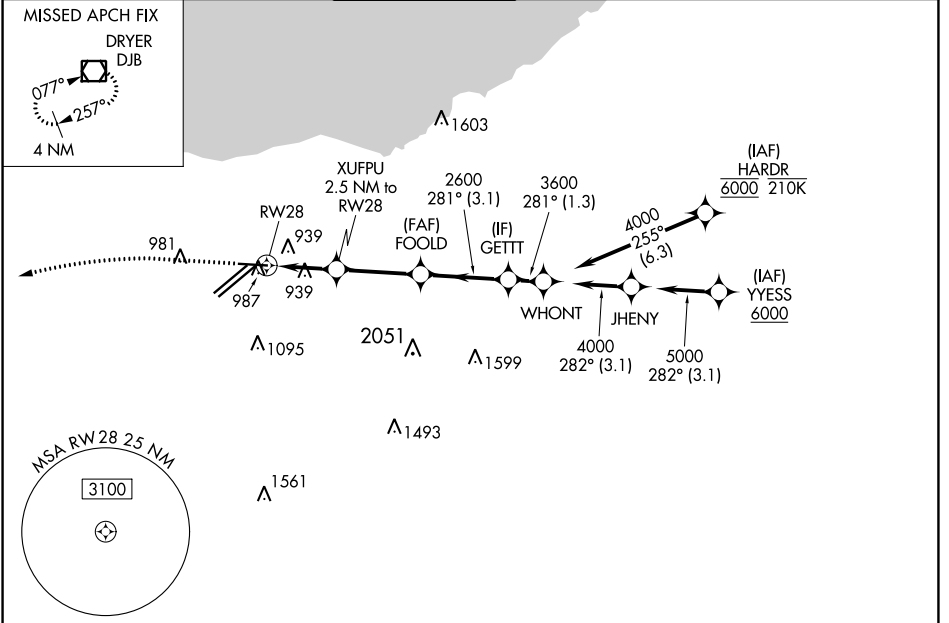
21280

WAAS CH 40109 W28A	APP CRS 281°	Rwy Idg 6018 TDZE 799 Apt Elev 799
--	------------------------	---

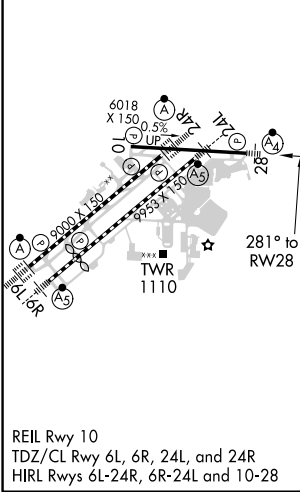
RNAV (GPS) RWY 28

CLEVELAND-HOPKINS INTL (CLE)

RNP APCH. For uncompensated Baro-VNAV systems, LNAV/VNAV NA below -18°C (0°F) or above 54°C (130°F). Circling Rwy 10 NA at night. Inop table does not apply to LPV.		MALSF 	MISSED APPROACH: Climb to 1400 then climbing left turn to 3000 direct DJB VOR/DME and hold.		
D-ATIS ARR 127.85 DEP 132.375	CLEVELAND APP CON 124.0 346.325	CLEVELAND TOWER 124.5 273.45	GND CON 121.7 273.45	CLNC DEL 125.05 273.45	CPDLC



ELEV 799	D	TDZE 799
----------	----------	----------



1400 3000 DJB 	*LNAV only. XUFPU 2.5 NM to RW28 RW28 *1.3 NM to RW28 *1640 FOOLD 2600 GETT 3600 GP 3.00° TCH 46			
	1.3 NM	1.2 NM	3 NM	3.1 NM
CATEGORY	A	B	C	D
LPV DA		999/40	200 (200-¾)	
LNAV/VNAV DA		1168/40	369 (400-¾)	
LNAV MDA	1260/40	461 (500-¾)	1260/60	461 (500-1¼)
CIRCLING	1420-1	621 (700-1)	1420-1¾ 621 (700-1¾)	1420-2 621 (700-2)

CLEVELAND, OHIO
Amdt 3 24MAY18

41°25'N-81°51'W

CLEVELAND-HOPKINS INTL (CLE) RNAV (GPS) RWY 28

EC-2, 30 DEC 2021 to 27 JAN 2022

EC-2, 30 DEC 2021 to 27 JAN 2022