

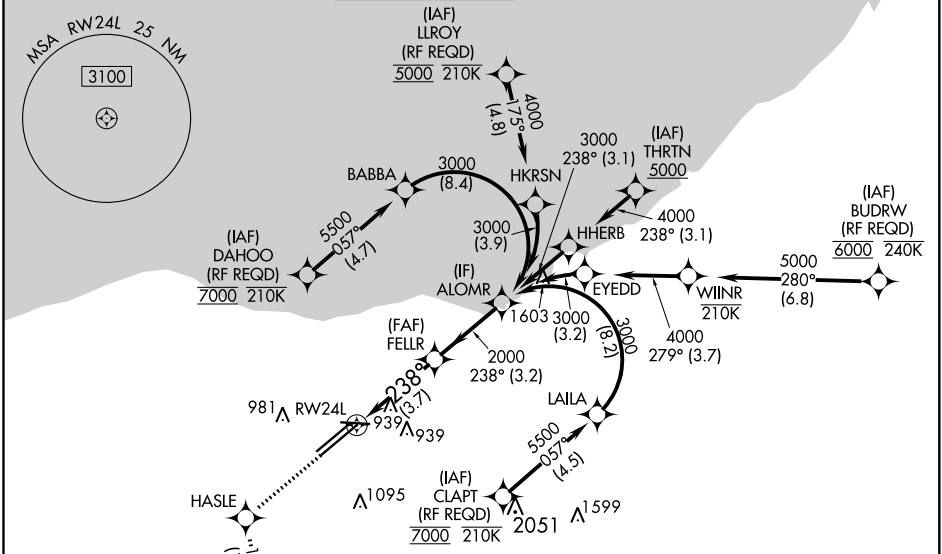
APP CRS <b>238°</b>	Rwy Idg TDZE Apt Elev	<b>9953</b> <b>786</b> <b>799</b>
------------------------	-----------------------------	---

# RNAV (RNP) Z RWY 24L

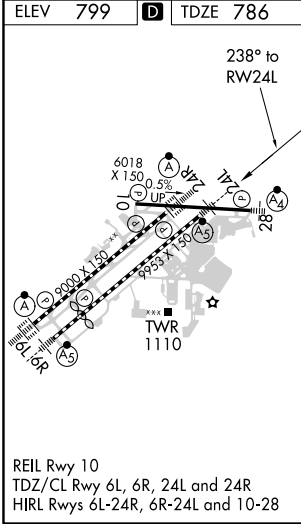
CLEVELAND-HOPKINS INTL (CLE)

RNP AR APCH.		MALSR	MISSED APPROACH: Climb to 3000 direct HASLE and on track 177° to SAROW and hold.		
<p>▼ For uncompensated Baro-VNAV systems, procedure NA below -18°C (0°F) or above 54°C (130°F). For inop ALS, increase RNP 0.19 all Cats visibility to RVR 5500.</p>					

D-ATIS ARR <b>127.85</b> DEP <b>132.375</b>	CLEVELAND APP CON <b>124.0 346.325</b>	CLEVELAND TOWER <b>124.5 273.45</b>	GND CON <b>121.7 273.45</b>	CLNC DEL <b>125.05 273.45</b>	CPDLC
---	---	--	--------------------------------	----------------------------------	-------



ELEV 799	<b>D</b>	TDZE 786
----------	----------	----------



3000	HASLE	SAROW	VGSI and RNAV glidepath not coincident (VGSI Angle 3.00/TCH 48).		
CATEGORY	A	B	C	D	
RNP 0.19 DA		1140/30	354 (400-¾%)		
RNP 0.30 DA		1243/45	457 (500-¾%)		

**AUTHORIZATION REQUIRED**

EC-2, 30 DEC 2021 to 27 JAN 2022

EC-2, 30 DEC 2021 to 27 JAN 2022