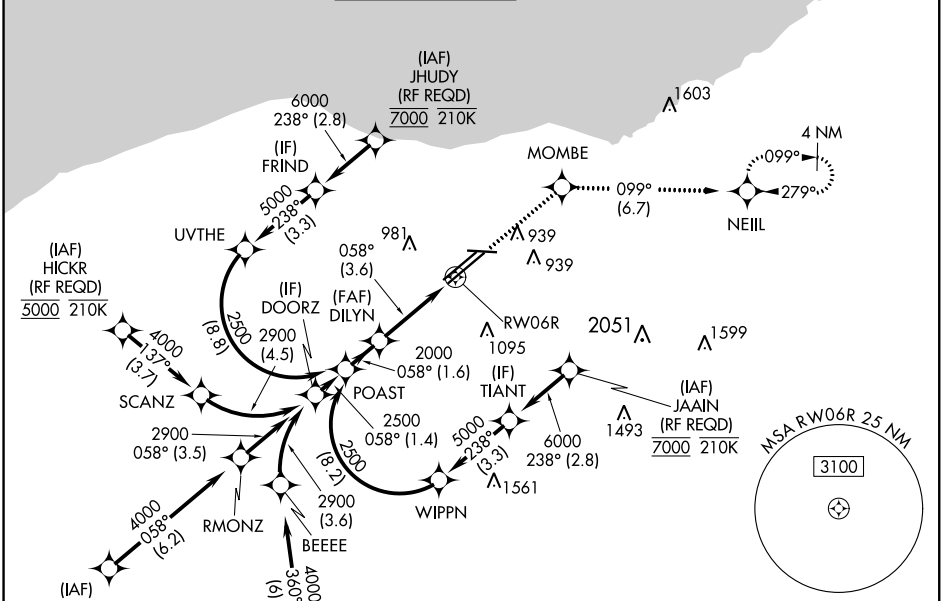


APP CRS	Rwy Idg	<b>8029</b>
<b>058°</b>	TDZE	<b>777</b>
	Apt Elev	<b>799</b>

# RNAV (RNP) Z RWY 6R

CLEVELAND-HOPKINS INTL (CLE)

RNP AR APCH.		MALSR		MISSED APPROACH: Climb to 3000 direct MOMBE and on track 099° to NEILL and hold. * Missed approach requires minimum climb of 270 feet per NM to 1400.	
<p>▼ For uncompensated Baro-VNAV systems, procedure NA below -18°C (0°F) or above 46°C (114°F). For inop ALS, increase RNP 0.15 all Cots visibility to RVR 5500.</p>					
D-ATIS	CLEVELAND APP CON	CLEVELAND TOWER	GND CON	CLNC DEL	CPDLC
ARR <b>127.85</b> DEP <b>132.375</b>	<b>124.0 346.325</b>	<b>124.5 273.45</b>	<b>121.7 273.45</b>	<b>125.05 273.45</b>	



EC-2, 30 DEC 2021 to 27 JAN 2022

EC-2, 30 DEC 2021 to 27 JAN 2022

ELEV 799	<b>D</b> TDZE 777
----------	-------------------

