

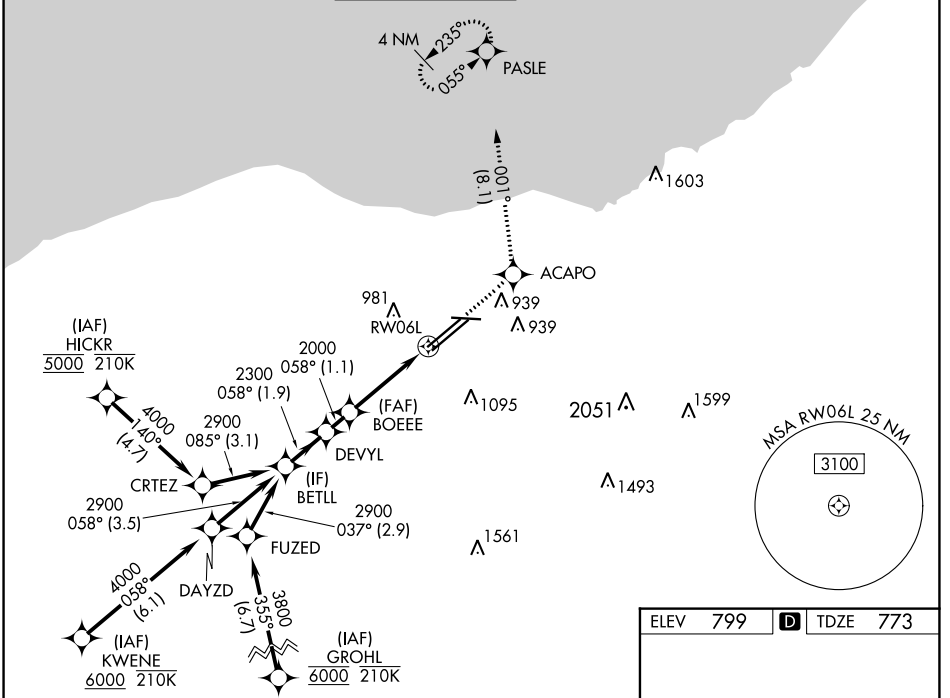
WAAS CH <b>56204</b> <b>W06A</b>	APP CRS <b>058°</b>	Rwy Idg <b>9000</b> TDZE <b>773</b> Apt Elev <b>799</b>
--	------------------------	---

# RNAV (GPS) Y RWY 6L

CLEVELAND-HOPKINS INTL (CLE)

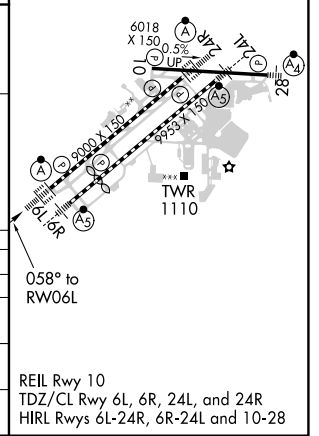
RNP APCH.	ALSF-2 	MISSED APPROACH: Climb to 3000 direct ACAPO and on track 001° to PASLE and hold.
<p><b>▼</b> For uncompensated Baro-VNAV systems, LNAV/VNAV NA below -18°C (0°F) or above 54°C (130°F). Circling Rwy 10 NA at night. For inop ALS, increase LNAV/VNAV all Cats visibility to RVR 5500 and increase LNAV Cats C/D visibility to 1½ SM.</p>		

D-ATIS ARR <b>127.85</b> DEP <b>132.375</b>	CLEVELAND APP CON <b>124.0 346.325</b>	CLEVELAND TOWER <b>124.5 273.45</b>	GND CON <b>121.7 273.45</b>	CLNC DEL <b>125.05 273.45</b>	CPDLC
---	---	--	--------------------------------	----------------------------------	-------



ELEV 799	<b>D</b> TDZE 773
----------	-------------------

VGSi and RNAV glidepath not coincident (VGSi Angle 3.00/TCH 69).		3000	ACAPO	PASLE
BETLL		↑		tr 001°
2900				
058°		*LNAV only.		
DEVYL		*1.3 NM to RW06L		
2300		RW06L		
2000		RW06L		
GP 3.00°		RW06L		
TCH 55		RW06L		
1.9 NM		1.1 NM		
1.9 NM		2.4 NM		
1.9 NM		1.3 NM		
CATEGORY	A	B	C	D
LPV DA	973/18		200 (200-½)	
LNAV/VNAV DA	1120/30		347 (400-⅔)	
LNAV MDA	1260/24 487 (500-½)		1260/50 487 (500-1)	
<b>C</b> CIRCLING	1420-1 621 (700-1)		1420-1¾ 621 (700-1¾)	
			1420-2 621 (700-2)	



EC-2, 30 DEC 2021 to 27 JAN 2022

EC-2, 30 DEC 2021 to 27 JAN 2022