

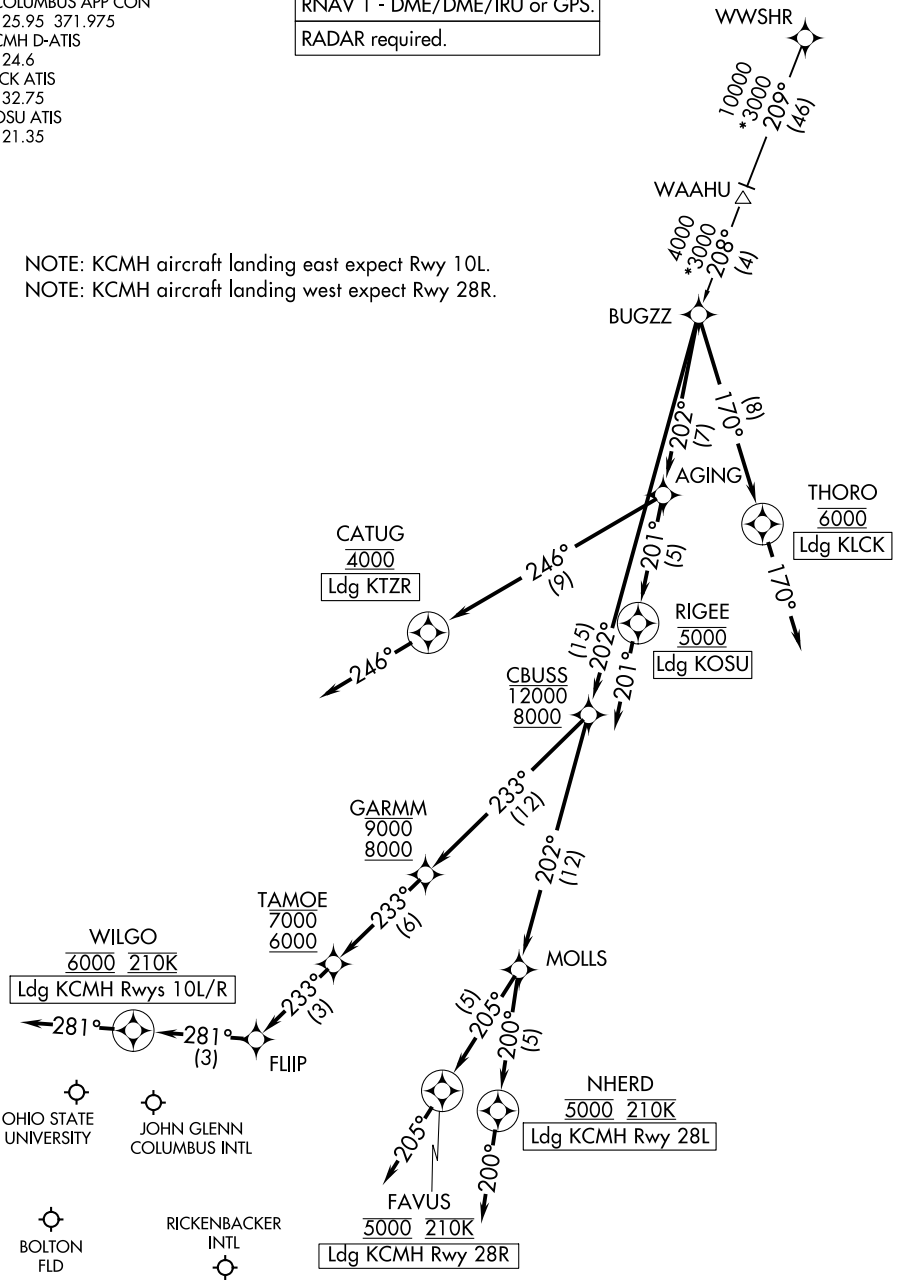
# CBUSS TWO ARRIVAL (RNAV)

COLUMBUS, OHIO

COLUMBUS APP CON  
 125.95 371.975  
 CMH D-ATIS  
 124.6  
 LCK ATIS  
 132.75  
 OSU ATIS  
 121.35

RNAV 1 - DME/DME/IRU or GPS.
RADAR required.

NOTE: KCMH aircraft landing east expect Rwy 10L.  
 NOTE: KCMH aircraft landing west expect Rwy 28R.



(NARRATIVE ON FOLLOWING PAGE)

NOTE: Chart not to scale.

# CBUSS TWO ARRIVAL (RNAV)

COLUMBUS, OHIO

# CBUSS TWO ARRIVAL(RNAV)

COLUMBUS, OHIO

## ARRIVAL ROUTE DESCRIPTION

### WWSHR TRANSITION (WWSHR.CBUSS2)

KCMH: From BUGZZ on track 202° to cross CBUSS between 8000 and 12000.

LANDING KCMH RUNWAYS 10L/R: From CBUSS on track 233° to cross GARMM between 8000 and 9000, then on track 233° to cross TAMOE between 6000 and 7000, then on track 233° to FLIIP, then on track 281° to cross WILGO at 6000 and at 210K, then on track 281°. Expect RADAR vectors to final approach course.

LANDING KCMH RUNWAY 28L: From CBUSS on track 202° to MOLLS, then on track 200° to cross NHERD at 5000 and at 210K, then on track 200°. Expect RADAR vectors to ILS or LOC Rwy 28L approach.

LANDING KCMH RUNWAY 28R: From CBUSS on track 202° to MOLLS, then on track 205° to cross FAVUS at 5000 and at 210K, then on track 205°. Expect RADAR vectors to ILS or LOC Rwy 28R approach.

LANDING KLCK: From BUGZZ on track 170° to cross THORO at 6000, then on track 170°. Expect RADAR vectors to final approach course.

LANDING KOSU: From BUGZZ on track 202° to AGING, then on track 201° to cross RIGEE at 5000, then on track 201°. Expect RADAR vectors to final approach course.

LANDING KTZR: From BUGZZ on track 202° to AGING, then on track 246° to cross CATUG at 4000, then on track 246°. Expect RADAR vectors to final approach course.

EC-2, 30 DEC 2021 to 27 JAN 2022

EC-2, 30 DEC 2021 to 27 JAN 2022