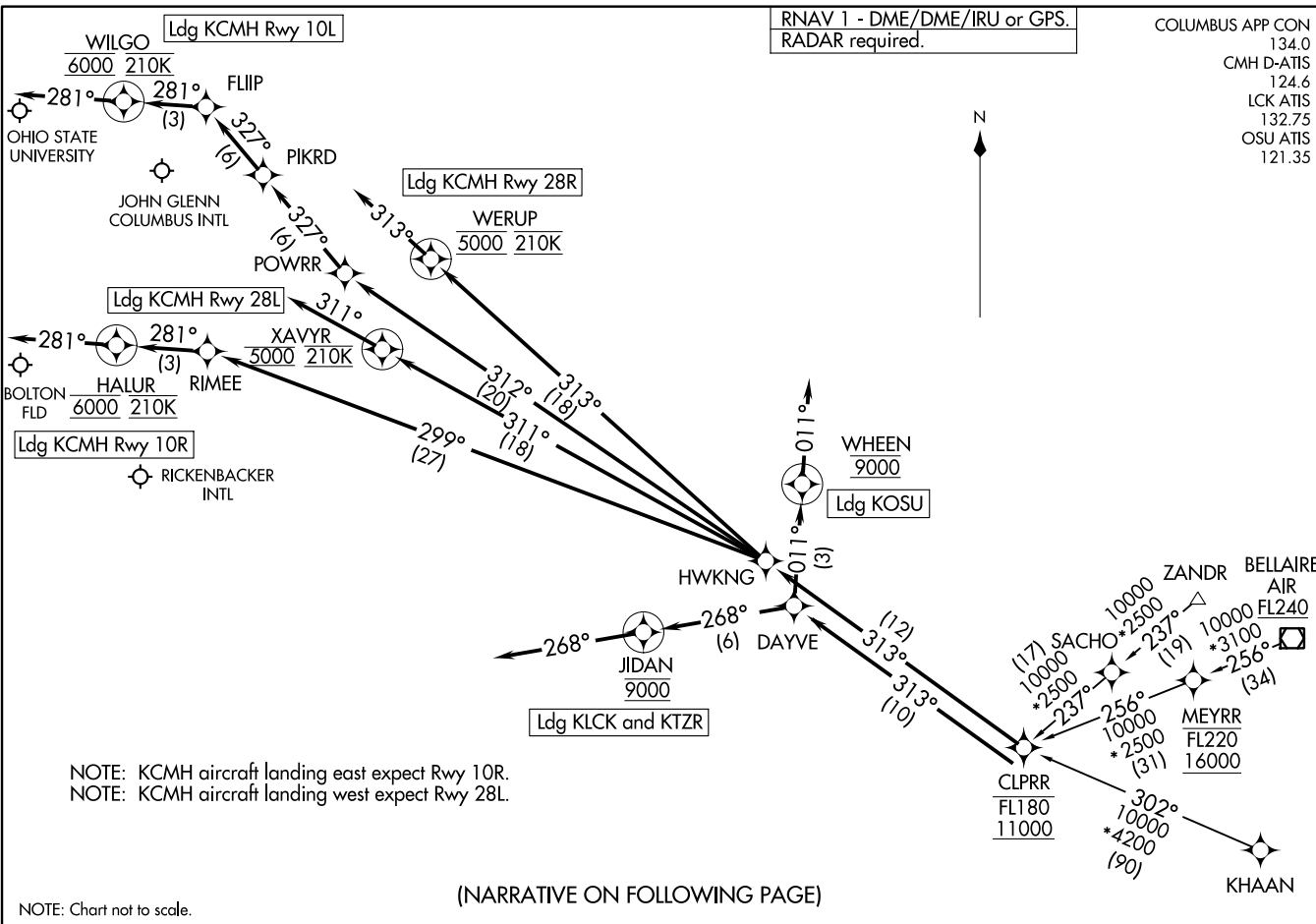


(CLRR, CLRR1) 12AUG21

CLRR ONE ARRIVAL (RNAV)

COLUMBUS, OHIO



CLRR ONE ARRIVAL (RNAV)

(CLRR, CLRR1) 21280

AL-94 (FAA)

COLUMBUS, OHIO

ARRIVAL ROUTE DESCRIPTION

BELLAIRE TRANSITION (AIR.CLPRR1):  
KHAAN TRANSITION (KHAAN.CLPRR1):  
ZANDR TRANSITION (ZANDR.CLPRR1):

KCMH: From CLPRR on track 313° to HWKNG.

LANDING KCMH RUNWAY 10L: From HWKNG on track 312° to POWRR, then on track 327° to PIKRD, then on track 327° to FLIIP, then on track 281° to cross WILGO at 6000 and at 210K, then on track 281°. Expect RADAR vectors to final approach course.

LANDING KCMH RUNWAY 10R: From HWKNG on track 299° to RIMEE, then on track 281° to cross HALUR at 6000 and at 210K, then on track 281°. Expect RADAR vectors to final approach course.

LANDING KCMH RUNWAY 28L: From HWKNG on track 311° to cross XAVYR at 5000 and at 210K, then on track 311°. Expect RADAR vectors to ILS or LOC Rwy 28L approach.

LANDING KCMH RUNWAY 28R: From HWKNG on track 313° to cross WERUP at 5000 and at 210K, then on track 313°. Expect RADAR vectors ILS or LOC Rwy 28R approach.

LANDING KTZR/KLCK: From CLPRR on track 313° to DAYVE, then on track 268° to cross JIDAN at 9000, then on track 268°. Expect RADAR vectors to final approach course.

LANDING KOSU: From CLPRR on track 313° to DAYVE, then on track 011° to cross WHEEN at 9000, then on track 011°. Expect RADAR vectors to final approach course.

EC-2, 30 DEC 2021 to 27 JAN 2022

EC-2, 30 DEC 2021 to 27 JAN 2022