

DUBLIN ONE ARRIVAL (RNAV)
(MELZZ:DUBLN1) 12AUG21

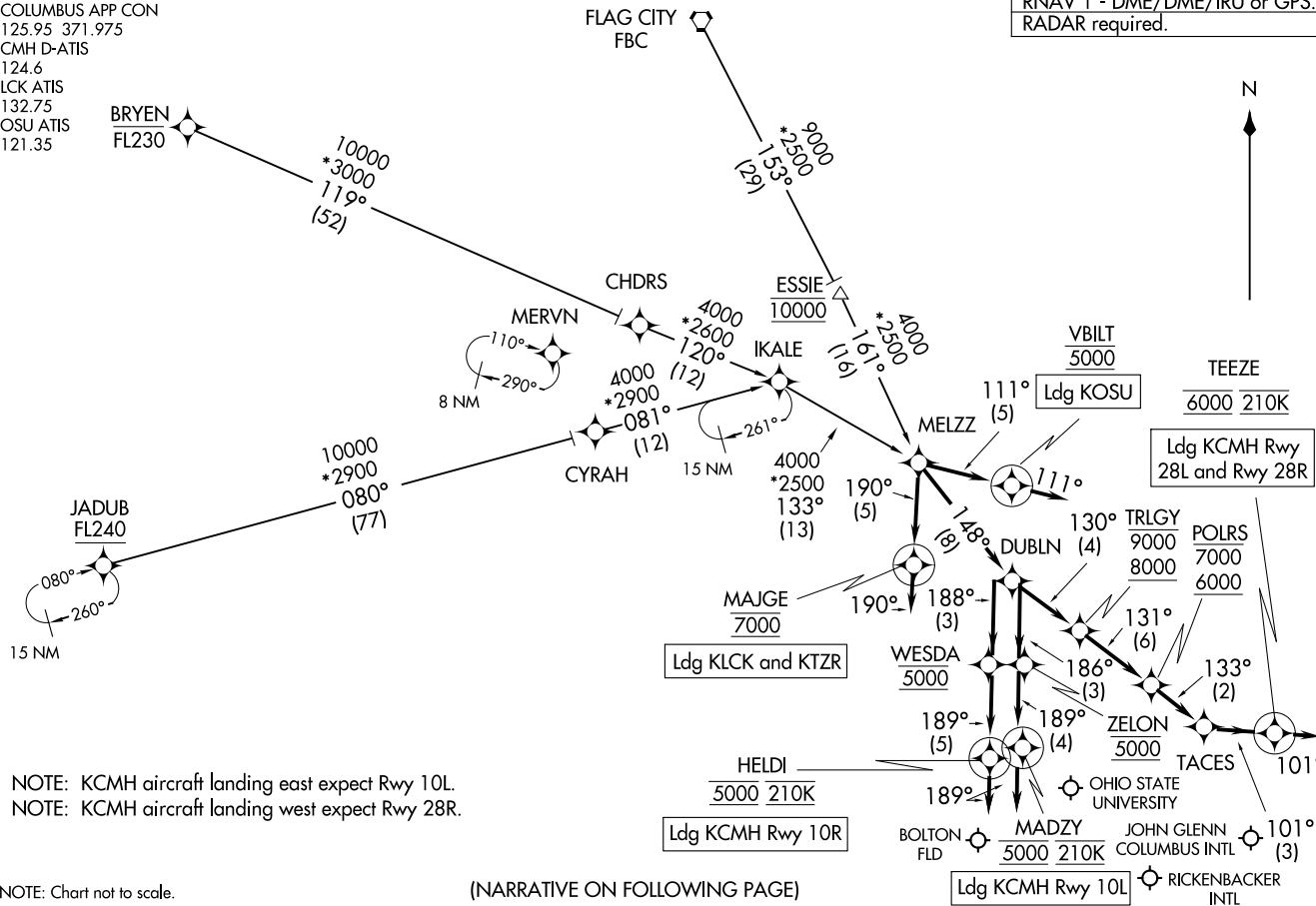
COLUMBUS APP CON
125.95 371.975
CMH D-ATIS
124.6
LCK ATIS
132.75
OSU ATIS
121.35

RNAV 1 - DME/DME/IRU or GPS.
RADAR required.

(MELZZ:DUBLN1) 21336
DUBLIN ONE ARRIVAL (RNAV)

AL-94 (FAA)

COLUMBUS, OHIO



NOTE: KCMH aircraft landing east expect Rwy 10L.
NOTE: KCMH aircraft landing west expect Rwy 28R.

NOTE: Chart not to scale.

(NARRATIVE ON FOLLOWING PAGE)

COLUMBUS, OHIO

ARRIVAL ROUTE DESCRIPTION

BRYEN TRANSITION (BRYEN.DUBLN1):

ESSIE TRANSITION (ESSIE.DUBLN1):

FLAG CITY TRANSITION (FBC.DUBLN1):

JADUB TRANSITION (JADUB.DUBLN1):

KCMH: From MELZZ on track 148° to DUBLN.

LANDING KCMH RUNWAY 10L: From DUBLN on track 186° to cross ZELON at 5000, then on track 189° to cross MADZY at 5000 and at 210K, then on track 189°. Expect RADAR vectors to ILS or LOC Rwy 10L approach.

LANDING KCMH RUNWAY 10R: From DUBLN on track 188° to cross WESDA at 5000, then on track 189° to cross HELDI at 5000 and at 210K, then on track 189°. Expect RADAR vectors to ILS or LOC Rwy 10R approach.

LANDING KCMH RUNWAY 28L/R: From DUBLN on track 130° to cross TRLGY between 8000 and 9000, then on track 131° to cross POLRS between 6000 and 7000, then on track 133° to TACES, then on track 101° to cross TEEZE at 6000 and at 210K, then on track 101°. Expect RADAR vectors to final approach course.

LANDING KTZR/KLCK: From MELZZ on track 190° to cross MAJGE at 7000, then on track 190°. Expect RADAR vectors to final approach course.

LANDING KOSU: From MELZZ on track 111° to cross VBILT at 5000, then on track 111°. Expect RADAR vectors to final approach course.

EC-2, 30 DEC 2021 to 27 JAN 2022

EC-2, 30 DEC 2021 to 27 JAN 2022