

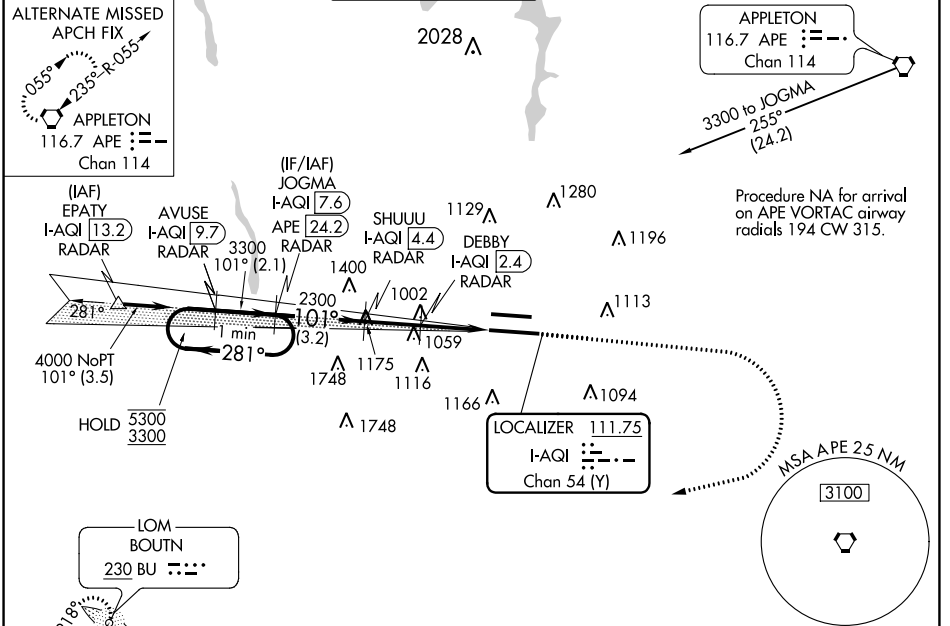
LOC/DME I-AQI 111.75 Chan 54 (Y)	APP CRS 101°	Rwy Idg 10113 TDZE 809 Apt Elev 815
--	------------------------	--

ILS RWY 10R (SA CAT I & II)

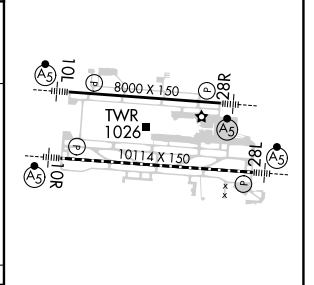
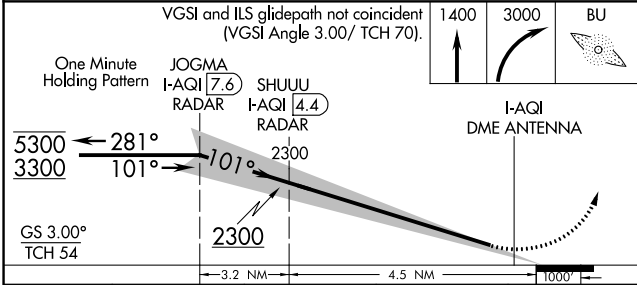
JOHN GLENN COLUMBUS INTL (CMH)

ADF required. DME or RADAR required.		MALSR	MISSED APPROACH: Climb to 1400 then climbing right turn to 3000 direct BU LOM and hold.
<p>Simultaneous approach authorized.</p> <p>SA CAT I, SA CAT II: Requires specific OPSPEC, MSPEC, or LOA approval.</p>		AS	

D-ATIS 124.6	COLUMBUS APP CON 125.95 371.975	COLUMBUS TOWER 132.7 257.8	GND CON 121.9 348.6	CLNC DEL 126.3	CPDLC
------------------------	---	--------------------------------------	-------------------------------	--------------------------	-------



ELEV 815	D	TDZE 809
----------	---	----------



CATEGORY	A	B	C	D
S-ILS 10R	SA CAT I	RA 146/14	150 DA 959	
S-ILS 10R	SA CAT II	RA 99/12	100 DA 909	

SA CATEGORY I & II ILS- SPECIAL AIRCREW & AIRCRAFT CERTIFICATION REQUIRED

TDZ/CL Rwy 10R-28L
HIRL Rwy 10R-28L and 10L-28R

EC-2, 30 DEC 2021 to 27 JAN 2022

EC-2, 30 DEC 2021 to 27 JAN 2022