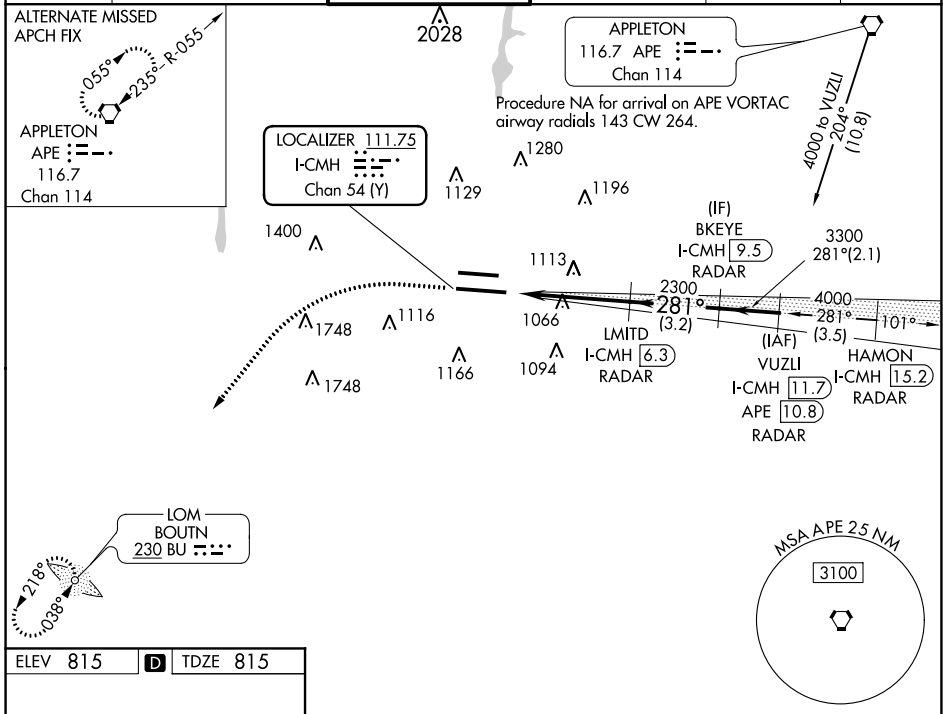


LOC/DME I-CMH 111.75	APP CRS 281°	Rwy Idg TDZE Apt Elev 10113 815 815
Chan 54 (Y)		

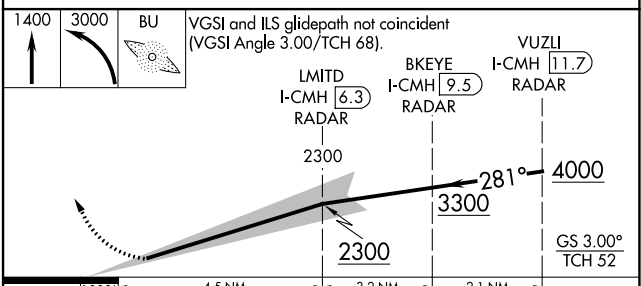
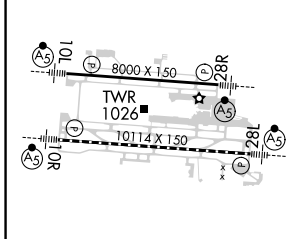
ILS RWY 28L (SA CAT I & II)

JOHN GLENN COLUMBUS INTL (CMH)

ADF required. DME or RADAR required.		MALSR	MISSED APPROACH: Climb to 1400 then climbing left turn to 3000 direct BU LOM and hold.		
⚠ Simultaneous approach authorized. ⚠ SA CAT I, SA CAT II: Requires specific OPSPEC, MSPEC, or LOA approval.		AS			
D-ATIS 124.6	COLUMBUS APP CON 125.95 371.975	COLUMBUS TOWER 132.7 257.8	GND CON 121.9 348.6	CLNC DEL 126.3	CPDLC



ELEV 815	D	TDZE 815
----------	----------	----------



CATEGORY	A	B	C	D
S-ILS 28L	SA CAT I RA 157/14 150 DA 965			
S-ILS 28L	SA CAT II RA 100/12 100 DA 915			

SA CATEGORY I & II ILS - SPECIAL AIRCREW & AIRCRAFT CERTIFICATION REQUIRED

EC-2, 30 DEC 2021 to 27 JAN 2022

EC-2, 30 DEC 2021 to 27 JAN 2022