

JAKTZ ONE ARRIVAL  
(JAKTZ.JAKTZ1) 12AUG21

JAKTZ ONE ARRIVAL (RNAV)  
(JAKTZ.JAKTZ1) 21280

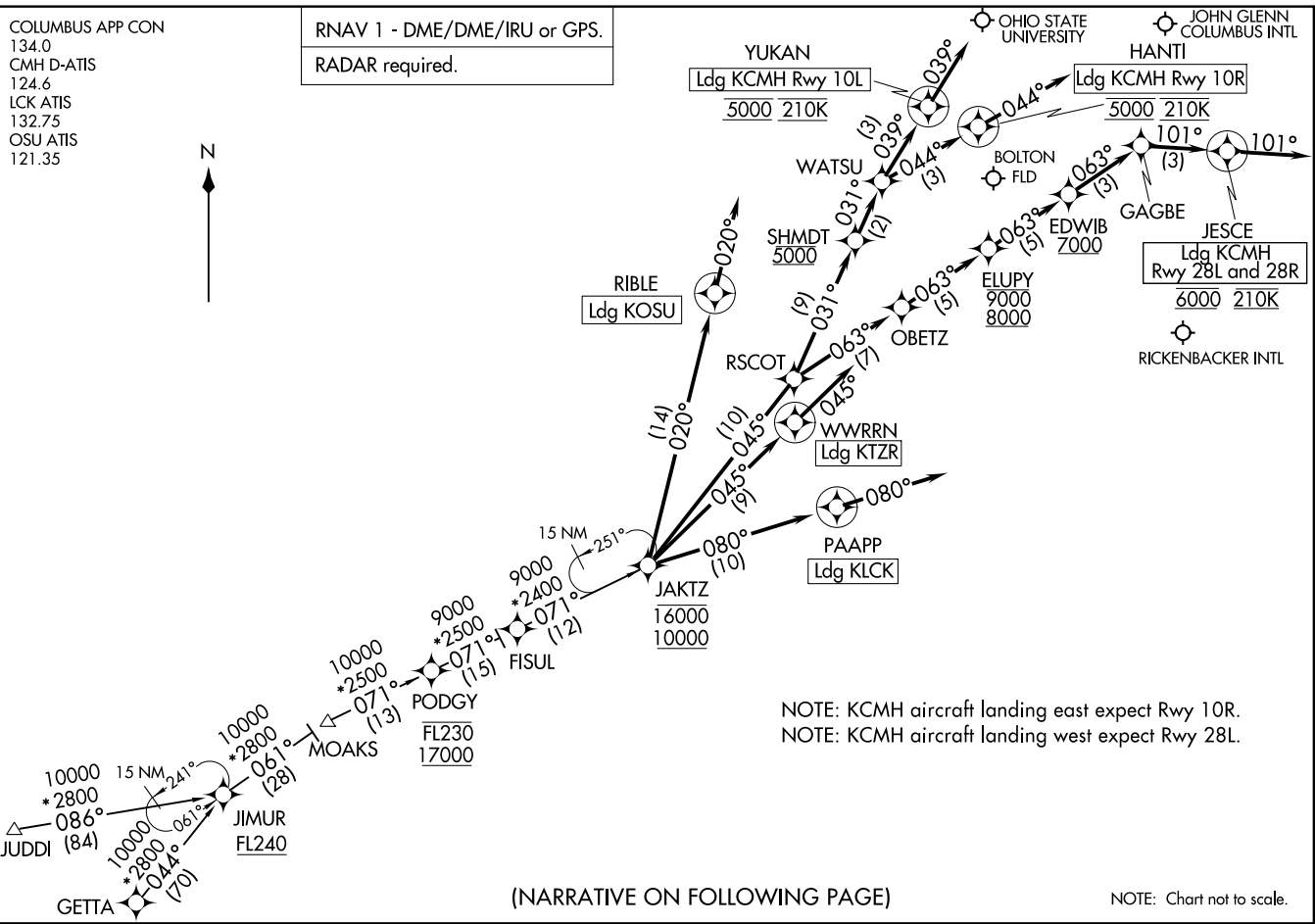
AL-94 (FAA)

COLUMBUS, OHIO

COLUMBUS, OHIO

COLUMBUS APP CON  
134.0  
CMH D-ATIS  
124.6  
LCK ATIS  
132.75  
OSU ATIS  
121.35

RNAV 1 - DME/DME/IRU or GPS.  
RADAR required.



NOTE: KCMH aircraft landing east expect Rwy 10R.  
NOTE: KCMH aircraft landing west expect Rwy 28L.

(NARRATIVE ON FOLLOWING PAGE)

NOTE: Chart not to scale.

ARRIVAL ROUTE DESCRIPTION

GETTA TRANSITION (GETTA.JAKTZ1)

JUDDI TRANSITION (JUDDI.JAKTZ1)

KCMH: From JAKTZ on track 045° to RSCOT.

LANDING KCMH RUNWAY 10L: From RSCOT on track 031° to cross SHMDT at 5000, then on track 031° to WATSU, then on track 039° to cross YUKAN at 5000 and at 210K, then on track 039°. Expect RADAR vectors to ILS or LOC RWY 10L approach.

LANDING KCMH RUNWAY 10R: From RSCOT on track 031° to cross SHMDT at 5000, then on track 031° to WATSU, then on track 044° to cross HANTI at 5000 and at 210K, then on track 044°. Expect RADAR vectors to ILS or LOC Rwy 10R approach.

LANDING KCMH RUNWAY 28L/R: From RSCOT on track 063° to OBETZ, then on track 063° to cross ELUPY between 8000 and 9000, then on track 063° to cross EDWIB at or above 7000, then on track 063° to GAGBE, then on track 101° to cross JESCE at 6000 and at 210K, then on track 101°. Expect RADAR vectors to final approach course.

LANDING KLCK: From JAKTZ on track 080° to PAAPP then on track 080°. Expect RADAR vectors to final approach course.

LANDING KOSU: From JAKTZ on track 020° to RIBLE, then on track 020°. Expect RADAR vectors to final approach course.

LANDING KTZR: From JAKTZ on track 045° to WWRRN, then on track 045°. Expect RADAR vectors to final approach course.

EC-2, 30 DEC 2021 to 27 JAN 2022

EC-2, 30 DEC 2021 to 27 JAN 2022