

NCLUS TWO DEPARTURE

**TOP ALTITUDE:
5000**

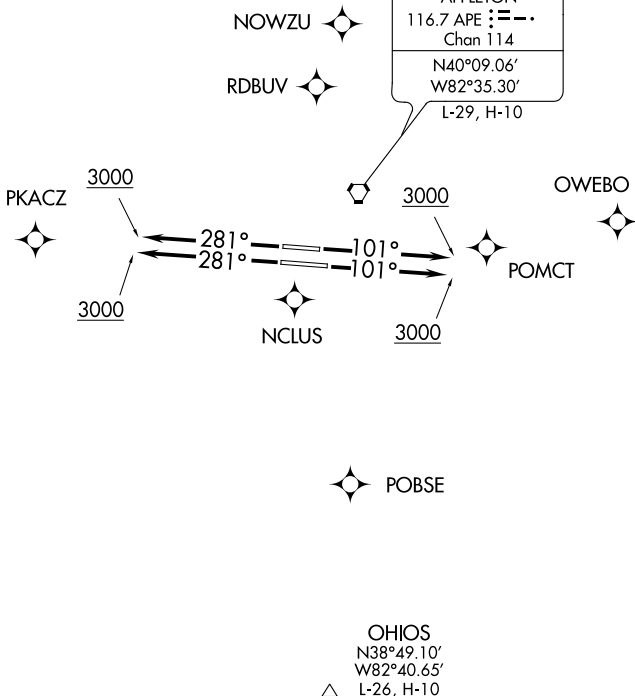
D-ATIS
124.6
CLNC DEL 126.3
CPDLC
GND CON
121.9 348.6
COLUMBUS DEP CON
125.95 371.975 (DEPARTURES OVER RDBUV & POMCT)
134.0 279.6 (DEPARTURES OVER PKACZ & POBSE)
COLUMBUS TOWER
132.7 257.8

ROSEWOOD
117.5 ROD
Chan 122
N40°17.27'
W84°02.59'
L-27, H-10

APPLETON
116.7 APE
Chan 114
N40°09.06'
W82°35.30'
L-29, H-10

TARRY
N40°03.26'
W83°54.85'
L-27, H-10

DAYTON
114.5 DGN
Chan 92
N40°00.99'-W84°23.81'
L-27, H-10



NOTE: RADAR required.

TAKEOFF MINIMUMS:

Rwy 10L/R, 28L/R: Standard with a minimum climb of 220' per NM to 3000.

NOTE: Chart not to scale.

DEPARTURE ROUTE DESCRIPTION

TAKEOFF RUNWAYS 10L/R: Climb on heading 101° to 3000 thence....

TAKEOFF RUNWAYS 28L/R: Climb on heading 281° to 3000 thence....

....maintain 5000 or assigned lower altitude. Expect RADAR vectors to first enroute fix.
Expect clearance to requested altitude/flight level 10 minutes after departure.