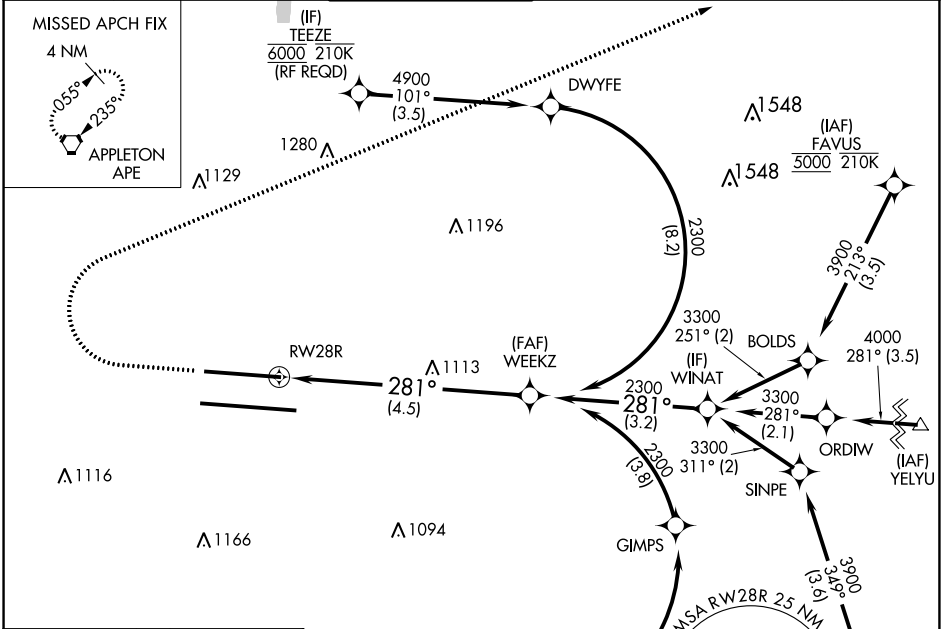


APP CRS	Rwy Idg	<b>8000</b>
<b>281°</b>	TDZE	<b>813</b>
	Apt Elev	<b>815</b>

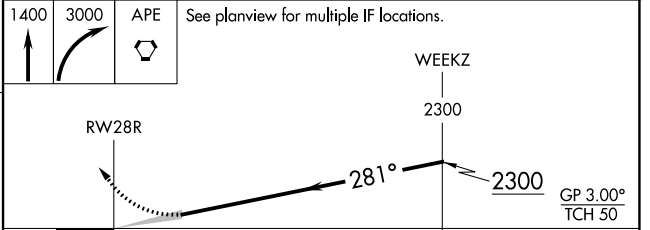
# RNAV (RNP) Z RWY 28R

JOHN GLENN COLUMBUS INTL (CMH)

RNP AR APCH.		MALSR		MISSED APPROACH: Climb to 1400 then climbing right turn to 3000 to APE VORTAC and hold.	
<p>For uncompensated Baro-VNAV systems, procedure NA below -19°C or above 54°C. For inop ALS, increase RNP 0.16 all Cats visibility to RVR 4500 and increase RNP 0.30 all Cats visibility to RVR 5500. Simultaneous approach authorized.</p>					
D-ATIS	COLUMBUS APP CON	COLUMBUS TOWER	GND CON	CLNC DEL	CPDLC
<b>124.6</b>	<b>125.95 371.975</b>	<b>132.7 257.8</b>	<b>121.9 348.6</b>	<b>126.3</b>	



ELEV	<b>815</b>	<b>D</b>	TDZE	<b>813</b>
------	------------	----------	------	------------



CATEGORY	A	B	C	D
RNP 0.16 DA	1129/24	316 (400-1/2)		
RNP 0.30 DA	1185/35	372 (400-3/8)		

TDZ/CL Rwy 10R-28L  
HIRL Rwy 10R-28L and 10L-28R

## AUTHORIZATION REQUIRED

EC-2, 30 DEC 2021 to 27 JAN 2022

EC-2, 30 DEC 2021 to 27 JAN 2022