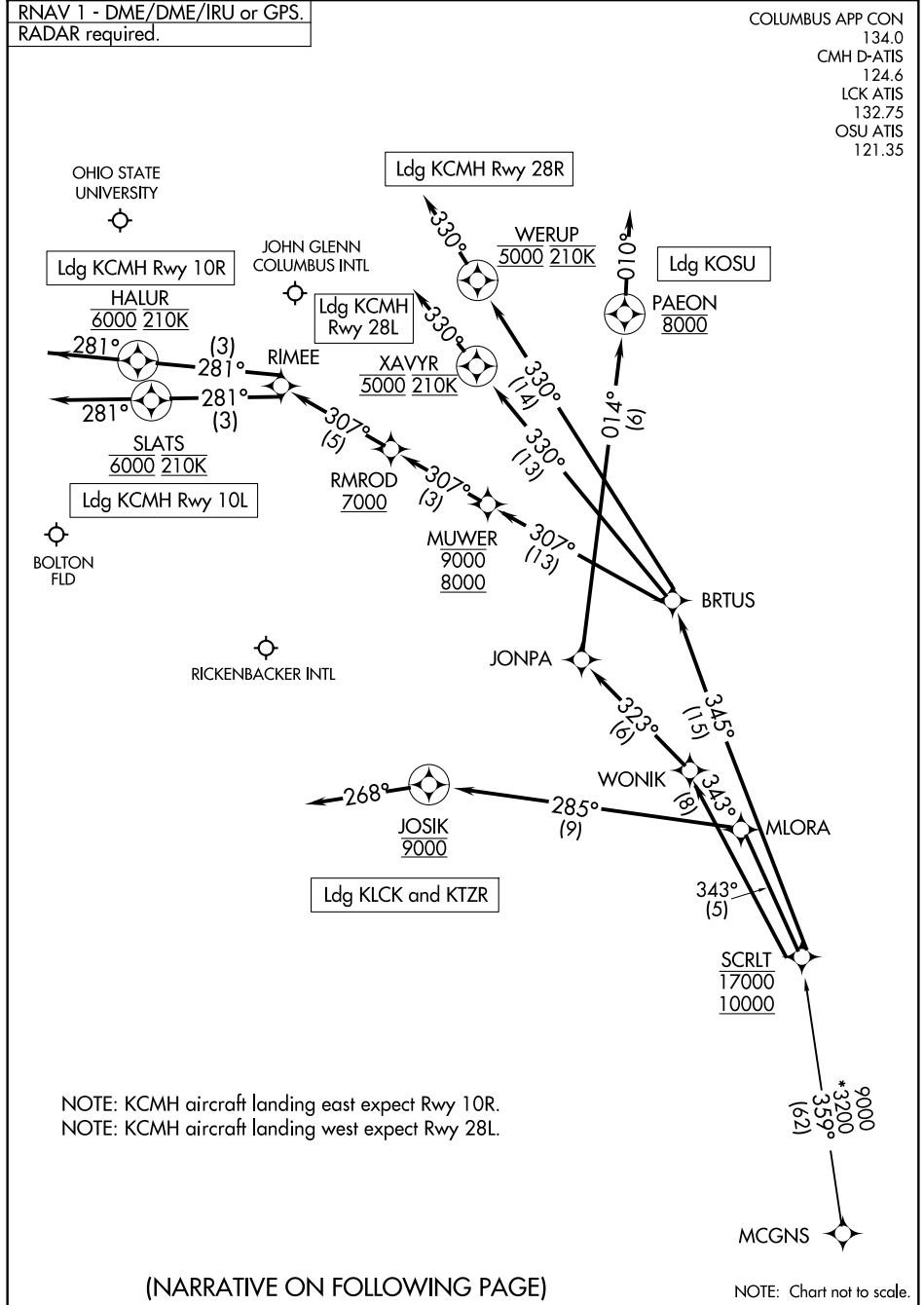


# SCRLT ONE ARRIVAL (RNAV)

COLUMBUS, OHIO

RNAV 1 - DME/DME/IRU or GPS.  
RADAR required.

COLUMBUS APP CON 134.0  
CMH D-ATIS 124.6  
LCK ATIS 132.75  
OSU ATIS 121.35



EC-2, 30 DEC 2021 to 27 JAN 2022

EC-2, 30 DEC 2021 to 27 JAN 2022

NOTE: KCMH aircraft landing east expect Rwy 10R.  
NOTE: KCMH aircraft landing west expect Rwy 28L.

(NARRATIVE ON FOLLOWING PAGE)

NOTE: Chart not to scale.

# SCRLT ONE ARRIVAL (RNAV)

COLUMBUS, OHIO

**SCRLT ONE ARRIVAL (RNAV)**

COLUMBUS, OHIO

**ARRIVAL ROUTE DESCRIPTION**MCGNS TRANSITION (MCGNS.SCRLT1)

KCMH: from SCRLT on track 345° to BRTUS.

LANDING KCMH RUNWAY 10L: From BRTUS on track 307° to cross MUWER between 8000 and 9000, then on track 307° to cross RMROD at or above 7000, then on track 307° to RIMEE, then on track 281° to cross SLATS at 6000 and at 210K, then on track 281°. Expect RADAR vectors to final approach course.

LANDING KCMH RUNWAY 10R: From BRTUS on track 307° to cross MUWER between 8000 and 9000, then on track 307° to cross RMROD at or above 7000, then on track 307° to RIMEE, then on track 281° to cross HALUR at 6000 and at 210K, then on track 281°. Expect RADAR vectors to final approach course.

LANDING KCMH RUNWAY 28L: From BRTUS on track 330° to cross XAVYR at 5000 and at 210K, then on track 330°. Expect RADAR vectors to ILS or LOC Rwy 28L approach.

LANDING KCMH RUNWAY 28R: From BRTUS on track 330° to cross WERUP at 5000 and at 210K, then on track 330°. Expect RADAR vectors to ILS or LOC Rwy 28R approach.

LANDING KTZR/KLCK: From SCRLT on track 343° to MLORA, then on track 285° to cross JOSIK at 9000, then on track 268°. Expect RADAR vectors to final approach course.

LANDING KOSU: From SCRLT on track 343° to WONIK, then on track 323° to JONPA, then on track 014° cross PAEON at 8000, then on track 010°. Expect RADAR vectors to final approach course.

EC-2, 30 DEC 2021 to 27 JAN 2022

EC-2, 30 DEC 2021 to 27 JAN 2022