

# TSHRT ONE ARRIVAL

## Transition Routes

HOUSTON, TEXAS

HOUSTON APP CON  
 119.175  
 EFD ATIS  
 135.575 269.9  
 HOU D-ATIS  
 124.6  
 SGR ATIS ★  
 118.125  
 TME ATIS  
 119.525

EAGLE LAKE  
 116.4 ELA :--:  
 Chan 111

SAN ANTONIO  
 116.8 SAT :--:  
 Chan 115  
 N29°38.64'  
 W98°27.68'  
 L-19, H-7

VICTORIA  
 109.0 VCT :--:  
 Chan 27

See following page for arrival routes.

BELLR  
 N29°19.49'-W096°05.32'  
 TURBOJET:  
 12000 250K

BIGTX  
 N28°49.30'  
 W96°36.94'

HYDRL  
 N29°03.22'  
 W96°24.19'

PALACIOS  
 117.3 PSX :--:  
 Chan 120  
 N28°45.87'  
 W96°18.37'  
 L-20-21, H-7

ALIEF  
 N28°41.23'  
 W96°44.31'

LMEDA  
 N28°27.95'  
 W96°56.37'

CORPUS CHRISTI  
 115.5 CRP :--:  
 Chan 102  
 N27°54.23'  
 W97°26.69'  
 L-20-21, H-7

NOTE: RADAR required.  
 NOTE: DME/DME/IRU or GPS equipped turbojet and turboprop aircraft landing HOU must file the BELLR (RNAV) STAR.  
 NOTE: DME required for holding at HYDRL.

NOTE: Chart not to scale. (CONTINUED ON FOLLOWING PAGE)

**CORPUS CHRISTI TRANSITION (CRP.TSHRT1):** From over CRP VORTAC on CRP R-029 to HYDRL, then on IAH R-221 to BELLR. Thence . . . .

**PALACIOS TRANSITION (PSX.TSHRT1):** From over PSX VORTAC on PSX R-011 to BELLR. Thence . . . .

**SAN ANTONIO TRANSITION (SAT.TSHRT1):** From over SAT VORTAC on SAT R-100 to HYDRL, then on IAH R-221 to BELLR. Thence . . . .

SC-5, 30 DEC 2021 to 27 JAN 2022

SC-5, 30 DEC 2021 to 27 JAN 2022

# TSHRT ONE ARRIVAL

## Transition Routes

HOUSTON, TEXAS

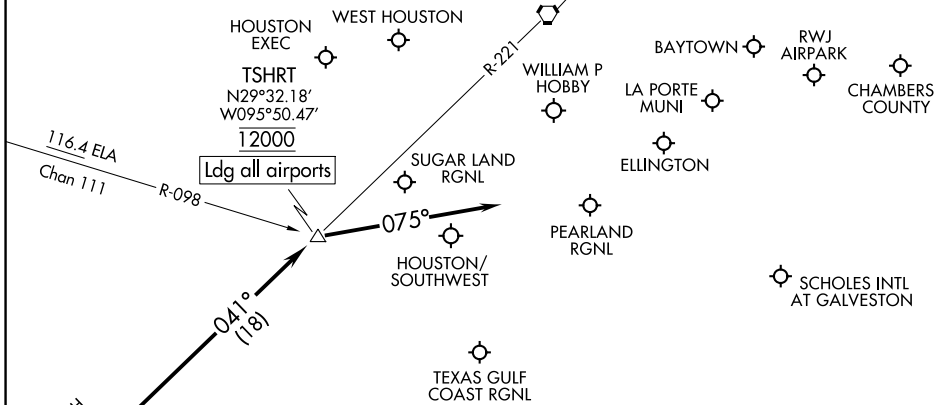
# TSHRT ONE ARRIVAL

## Arrival Routes

HOUSTON, TEXAS

HOUSTON APP CON  
 119.175  
 EFD ATIS  
 135.575 269.9  
 HOU D-ATIS  
 124.6  
 SGR ATIS ★  
 118.125  
 TME ATIS  
 119.525

HUMBLE  
 116.6 IAH  
 Chan 113



SC-5, 30 DEC 2021 to 27 JAN 2022

SC-5, 30 DEC 2021 to 27 JAN 2022

NOTE: RADAR required.  
 NOTE: DME/DME/IRU or GPS equipped turbojet and turboprop aircraft landing HOU must file the BELLR (RNAV) STAR.  
 NOTE: DME required for holding at HYDRL.

NOTE: Chart not to scale.

### ARRIVAL ROUTE DESCRIPTION

... from over BELLR on IAH R-221 to cross TSHRT at 12000. From TSHRT fly heading 075° for vectors to final approach course.