

LOC/DME I-LRD	APP CRS	18R	18L
111.9 Chan 56	178°	Rwy Idg 8743 8236	TDZE 504 499
		Apt Elev 508 508	

ILS or LOC RWY 18R

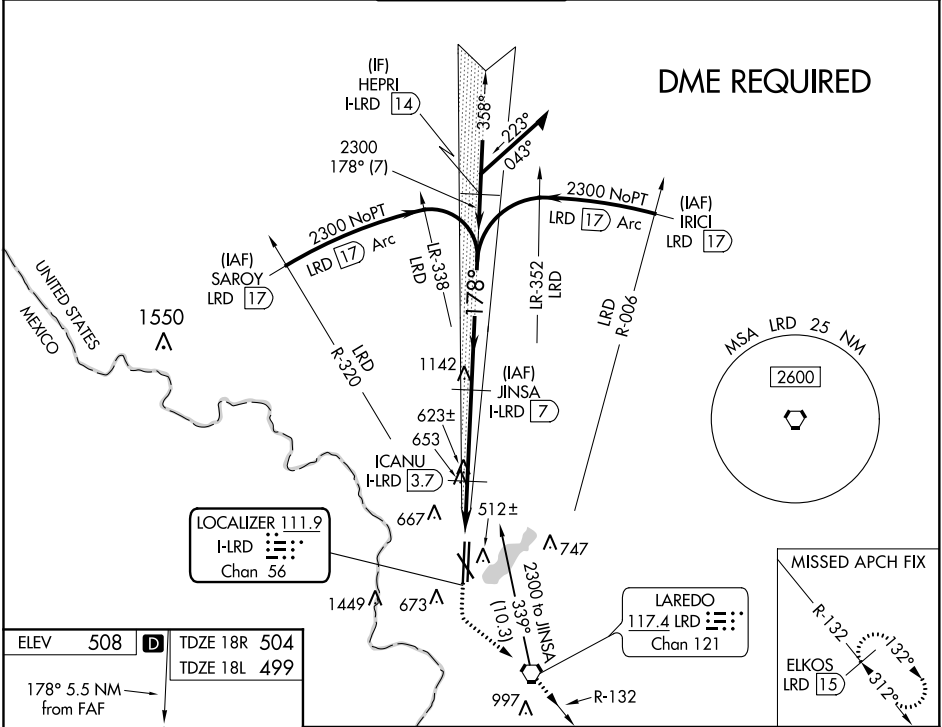
LAREDO INTL (L.RD)

⚠ Circling NA west of Rwy 14 and 36L.
⚠ DME required.
 For inop ALS, increase S-ILS 18R Cat E visibility to ¾ SM and increase S-LOC 18R Cat C/D/E visibility to 1½ SM.



MISSED APPROACH: Climb to 1100 then climbing left turn to 2500 direct LRD VORTAC and on LRD VORTAC R-132 to ELKOS/LRD 15 DME and hold.

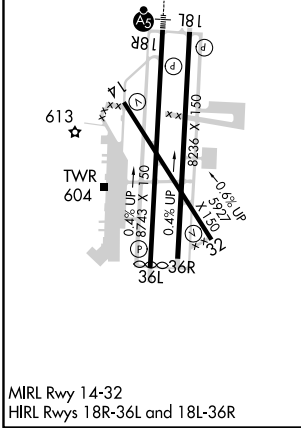
ATIS 125.775	HOUSTON CENTER 127.8 307.2	LAREDO TOWER ★ 120.1(CTAF) 0 257.9	GND CON 121.8	UNICOM 122.95
------------------------	--------------------------------------	--	-------------------------	-------------------------



SC-3, 30 DEC 2021 to 27 JAN 2022

SC-3, 30 DEC 2021 to 27 JAN 2022

ELEV 508	D TDZE 18R 504
	TDZE 18L 499
178° 5.5 NM from FAF	



MIRL Rwy 14-32
 HIRL Rwy 18R-36L and 18L-36R

1100 2500 LRD ELKOS LRD 15 VGSI and ILS glidepath not coincident (VGSI Angle 3.00/TCH 50).
 Use I-LRD DME when on the localizer course.
 *LOC only

ICANU I-LRD 3.7
 I-LRD 2.7
 I-LRD 1.5

2300 358° 2300 178° 2300
 GS 3.00° TCH 57

1.2 NM -1.1 NM -3.3 NM

Remain within 15 NM

CATEGORY	A	B	C	D	E
S-ILS 18R	704-½		200 (200-½)		
S-LOC 18R	920-½	416 (500-½)	920-¾		416 (500-¾)
SIDESTEP 18L	920-1	421 (500-1)	920-1½	920-2	421 (500-2)
C CIRCLING	940-1	980-1	1100-1½	1200-2¼	1200-2½
	432 (500-1)	472 (500-1)	592 (600-1½)	692 (700-2¼)	692 (700-2½)