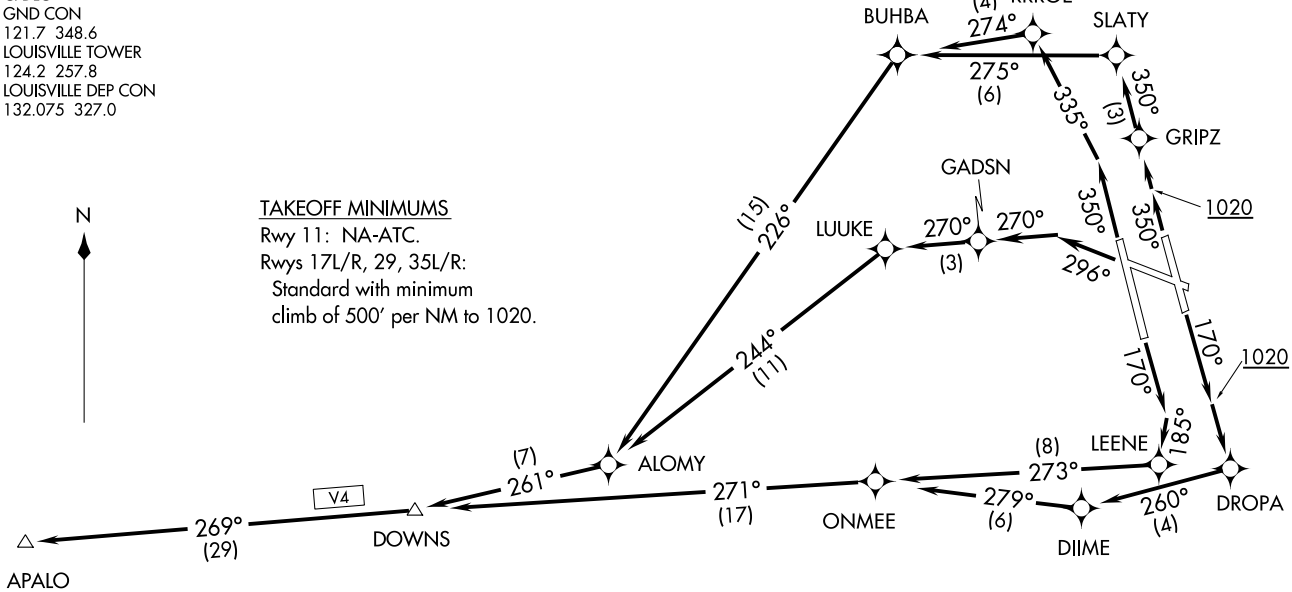


**TOP ALTITUDE:  
5000**

D-ATIS 118.725  
CLNC DEL  
126.1 275.8  
CPDLC  
GND CON  
121.7 348.6  
LOUISVILLE TOWER  
124.2 257.8  
LOUISVILLE DEP CON  
132.075 327.0

TAKEOFF MINIMUMS  
Rwy 11: NA-ATC.  
Rwys 17L/R, 29, 35L/R:  
Standard with minimum  
climb of 500' per NM to 1020.



- NOTE: RNAV 1.
- NOTE: DME/DME/IRU or GPS required.
- NOTE: RADAR required for non-GPS equipped aircraft.
- NOTE: For Turbojet aircraft only.
- NOTE: If unable to accept climb rate, advise ATC on initial contact.
- NOTE: Transponder code will be issued via PDC or Louisville clearance delivery.

NOTE: Chart not to scale.

(NARRATIVE ON FOLLOWING PAGE)

APALO SIX DEPARTURE (RNAV)  
(APAL06.APALO) 05DECT9

LOUISVILLE MUHAMMAD ALI INTL (SDF)  
LOUISVILLE, KENTUCKY

(APAL06.APALO) 19339  
APALO SIX DEPARTURE (RNAV)

AL-239 (FAA)  
LOUISVILLE MUHAMMAD ALI INTL (SDF)  
LOUISVILLE, KENTUCKY



DEPARTURE ROUTE DESCRIPTION

TAKEOFF RUNWAY 17L: Climb heading 170° to 1020, then direct DROPA, then on depicted route to APALO, thence....

TAKEOFF RUNWAY 17R: Climb heading 170° to intercept course 185° to LEENE, then on depicted route to APALO, thence....

TAKEOFF RUNWAY 29: Climb heading 296° to intercept course 270° to GADSN, then on depicted route to APALO, thence....

TAKEOFF RUNWAY 35L: Climb heading 350° to intercept course 335° to RRROE, then on depicted route to APALO, thence....

TAKEOFF RUNWAY 35R: Climb heading 350° to 1020, then direct GRIPZ, then on depicted route to APALO, thence....

....maintain 5000. Expect clearance to filed altitude 10 minutes after departure.

SE-1, 30 DEC 2021 to 27 JAN 2022

SE-1, 30 DEC 2021 to 27 JAN 2022