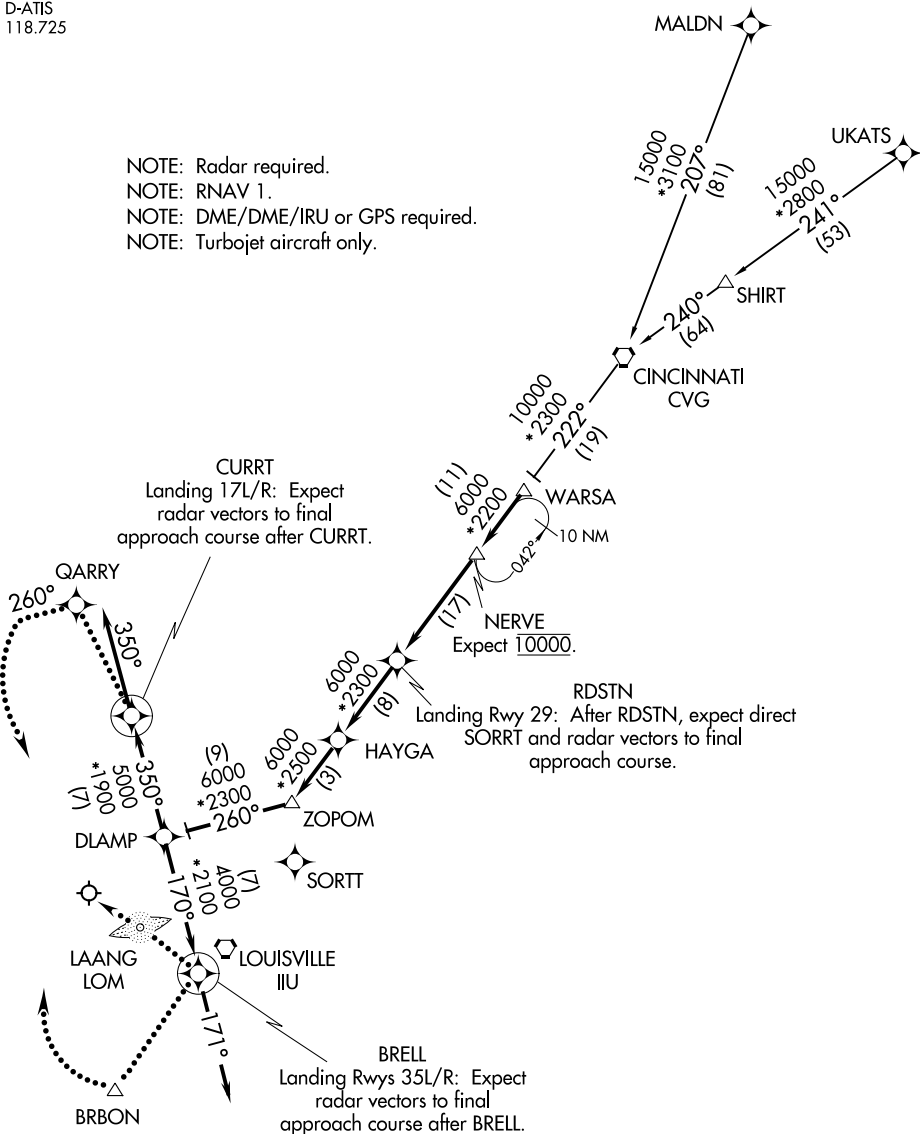


DLAMP SIX ARRIVAL (RNAV)

LOUISVILLE APP CON
132.075 327.0
D-ATIS
118.725

- NOTE: Radar required.
- NOTE: RNAV 1.
- NOTE: DME/DME/IRU or GPS required.
- NOTE: Turbojet aircraft only.



SE-1, 30 DEC 2021 to 27 JAN 2022

SE-1, 30 DEC 2021 to 27 JAN 2022

NOTE: Chart not to scale.

(NARRATIVE ON FOLLOWING PAGE)

DLAMP SIX ARRIVAL (RNAV)

DLAMP SIX ARRIVAL (RNAV)

ARRIVAL ROUTE DESCRIPTION

CINCINNATI TRANSITION (CVG.DLAMP6):

MALDN TRANSITION (MALDN.DLAMP6):

UKATS TRANSITION (UKATS.DLAMP6):

From WARSA on track 222° to NERVE, then on track 222° to RDSTN, then on track 222° to HAYGA, then on track 222° to ZOPOM, then on track 260° to DLAMP, then on assigned runway transition.

LANDING RWYS 17L/R: From DLAMP on track 350° to CURRT, then on track 350°. Expect radar vectors to final approach course.

LANDING RWY 29: From DLAMP on track 170° to BRELL, then on track 171°. Expect radar vectors to final approach course after RDSTN.

LANDING RWYS 35L/R: From DLAMP on track 170° to BRELL, then on track 171°. Expect radar vectors to final approach course.

LOST COMMUNICATIONS:

Landing Rwys 17L/R: Track to CURRT, cross CURRT at 5000, then proceed direct QARRY, at QARRY fly heading 260°, maintain 5000, intercept and execute ILS or LOC Rwy 17L approach. If unable, proceed to IIU VORTAC and hold, maintain 6000.

Landing Rwy 29: Track to BRELL, cross BRELL at 4000, then proceed direct LAANG LOM, maintain 4000, execute LOC Rwy 29 approach. If unable, proceed to IIU VORTAC and hold, maintain 6000.

Landing Rwys 35L/R: Track to BRELL, cross BRELL at 4000, then proceed direct BRBON, maintain 4000. Execute ILS or LOC Rwy 35R approach. If unable proceed to IIU VORTAC and hold maintain 6000.

SE-1, 30 DEC 2021 to 27 JAN 2022

SE-1, 30 DEC 2021 to 27 JAN 2022