

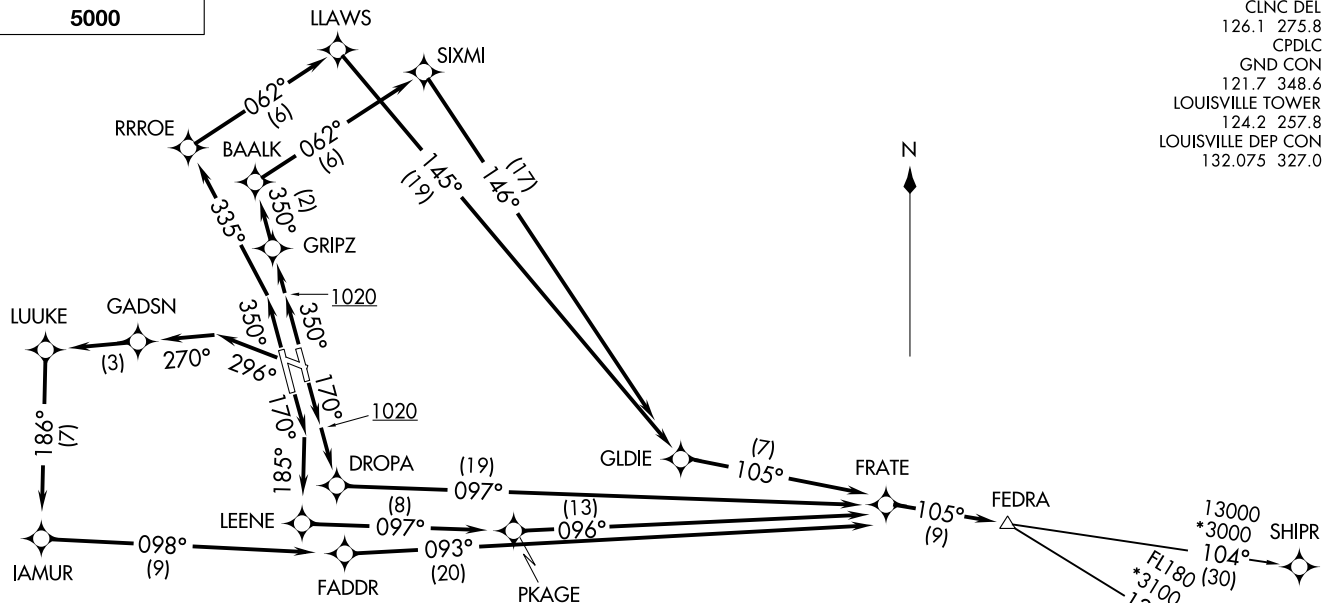
D-ATIS 118.725  
 CLNC DEL 126.1 275.8  
 CPDLC GND CON 121.7 348.6  
 LOUISVILLE TOWER 124.2 257.8  
 LOUISVILLE DEP CON 132.075 327.0

(FEDRAS.FEDRA) 1922Z  
 FEDRA FIVE DEPARTURE (RNAV)

AL-239 (FAA)

LOUISVILLE MUHAMMAD ALI INTL (SDF)  
 LOUISVILLE, KENTUCKY

**TOP ALTITUDE:  
 5000**



**TAKEOFF MINIMUMS:**

Rwy 11: NA-ATC.  
 Rws 17L/R, 29, 35L/R: Standard with minimum climb of 500' per NM to 1020.

- NOTE: RNAV 1.
- NOTE: DME/DME/IRU or GPS required.
- NOTE: RADAR required for non-GPS equipped aircraft.
- NOTE: For Turbojet aircraft only.
- NOTE: If unable to accept climb rate, advise ATC on initial contact.
- NOTE: Transponder code will be issued via PDC or Louisville clearance delivery.

(NARRATIVE ON FOLLOWING PAGE)

NOTE: Chart not to scale.

FEDRA FIVE DEPARTURE (RNAV)  
 (FEDRAS.FEDRA) 15AUG19

LOUISVILLE, KENTUCKY  
 LOUISVILLE MUHAMMAD ALI INTL (SDF)

# FEDRA FIVE DEPARTURE (RNAV)



## DEPARTURE ROUTE DESCRIPTION

TAKEOFF RUNWAY 17L: Climb heading 170° to 1020, then direct DROPA, then on depicted route to FEDRA, thence....

TAKEOFF RUNWAY 17R: Climb heading 170° to intercept course 185° to LEENE, then on depicted route to FEDRA, thence....

TAKEOFF RUNWAY 29: Climb heading 296° to intercept course 270° to GADSN, then on depicted route to FEDRA, thence....

TAKEOFF RUNWAY 35L: Climb heading 350° to intercept course 335° to RRROE, then on depicted route to FEDRA, thence....

TAKEOFF RUNWAY 35R: Climb heading 350° to 1020, then direct GRIPZ, then on depicted route to FEDRA, thence....

....(Transition). Maintain 5000. Expect clearance to filed altitude 10 minutes after departure.

OHAGI TRANSITION (FEDRA5.OHAGI):

SHIPR TRANSITION (FEDRA5.SHIPR):

SE-1, 30 DEC 2021 to 27 JAN 2022

SE-1, 30 DEC 2021 to 27 JAN 2022