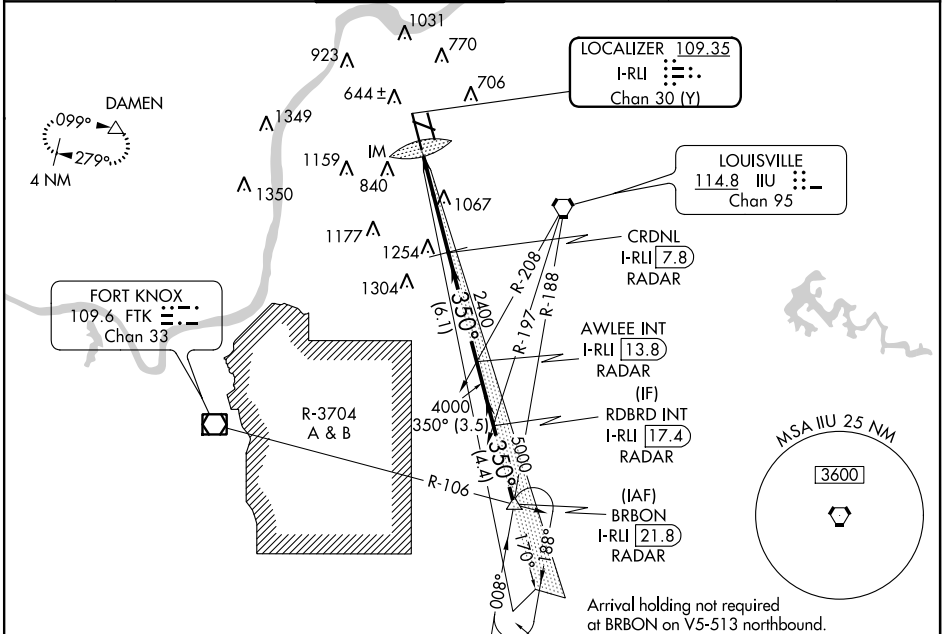


| | | | |
|--|------------------------|---|--------------|
| LOC/DME I-RLI 109.35 Chan 30 (Y) | APP CRS 350° | Rwy Idg TDZE 464 Apt Elev 501 | 10000 |
|--|------------------------|---|--------------|

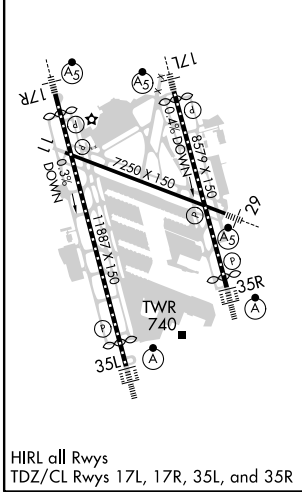
ILS RWY 35L (CAT II & III)

LOUISVILLE MUHAMMAD ALI INTL (SDF)

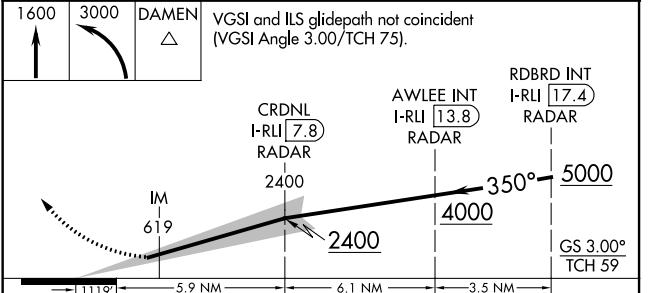
| | | | | | |
|--|--|--|-------------------------------|---|-------|
| RNAV 1-GPS required. DME or RADAR required. | | | ALSF-2 | MISSED APPROACH: Climb to 1600 then climbing left turn to 3000 direct to DAMEN and hold. (GPS required) | |
| <p>Simultaneous approach authorized. CAT II: RVR 1000 authorized with specific OPSPEC, MSPEC, or LOA approval and use of autoland or HUD to touchdown.</p> | | | | | |
| D-ATIS 118.725 | LOUISVILLE APP CON 132.075 327.0 | LOUISVILLE TOWER 124.2 257.8 | GND CON 121.7 348.6 | CLNC DEL 126.1 275.8 | CPDLC |



| | | |
|----------|----------|----------|
| ELEV 501 | D | TDZE 464 |
|----------|----------|----------|



HIRL all Rwys
TDZ/CL Rwys 17L, 17R, 35L, and 35R



| | | | | |
|-----------|----------------------------|---|---|---|
| CATEGORY | A | B | C | D |
| S-ILS 35L | CAT II RA 99/12 100 DA 564 | | | |
| S-ILS 35L | CAT III RVR 06 | | | |

CATEGORY II & III ILS - SPECIAL AIRCREW & AIRCRAFT CERTIFICATION REQUIRED

SE-1, 30 DEC 2021 to 27 JAN 2022

SE-1, 30 DEC 2021 to 27 JAN 2022