


LOC/DME I-PKI <b>111.95</b>	APP CRS <b>170°</b>	Rwy ldg <b>7800</b>
Chan <b>56 (Y)</b>	TDZE <b>499</b>	Apt Elev <b>501</b>

**ILS or LOC RWY 17L**  
LOUISVILLE MUHAMMAD ALI INTL (SDF)

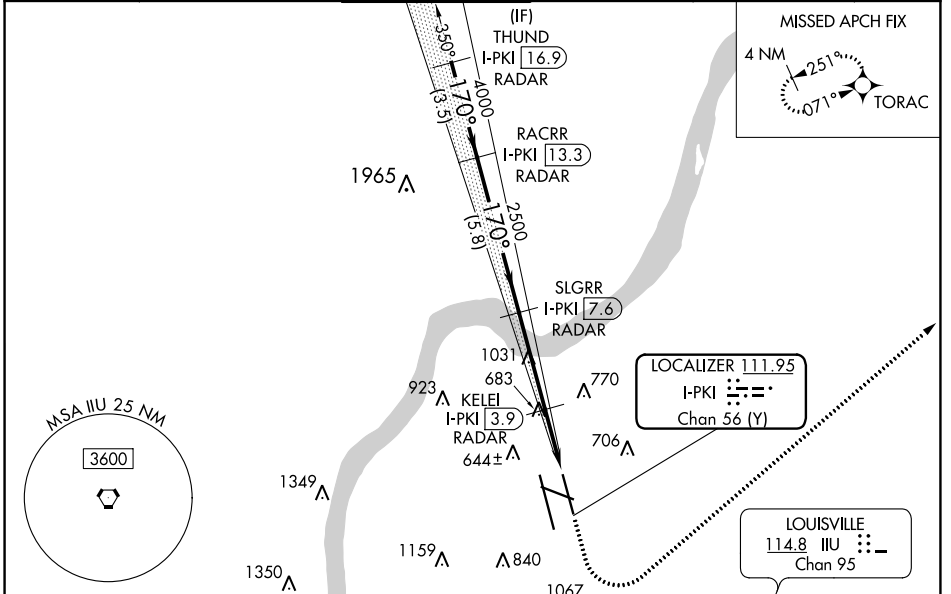
RNAV 1-GPS required.  
DME or RADAR required.

**▼** Circling Rwy 11 NA at night. Simultaneous approach authorized.  
**▲** For inop ALS, increase S-LOC 17L Cat C/D visibility to 1 3/8 SM.

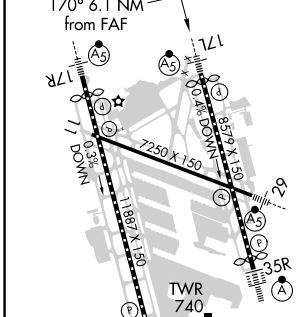
MALSR 

MISSED APPROACH: Climb to 1600 then climbing left turn to 4000 direct TORAC and hold.

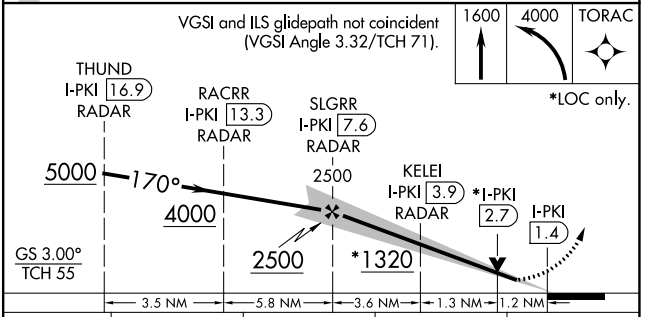
D-ATIS <b>118.725</b>	LOUISVILLE APP CON <b>132.075 327.0</b>	LOUISVILLE TOWER <b>124.2 257.8</b>	GND CON <b>121.7 348.6</b>	CLNC DEL <b>126.1 275.8</b>	CPDLC
--------------------------	--	--	-------------------------------	--------------------------------	-------



ELEV 501	<b>D</b>	TDZE 499
----------	----------	----------



HIRL all Rwys TDZ/CL Rws 17L, 17R, 35L, and 35R					
FAF to MAP 6.1 NM					
Knots	60	90	120	150	180
Min:Sec	6:06	4:04	3:03	2:26	2:02



CATEGORY	A	B	C	D
S-ILS 17L	699/18 200 (200-1/2)			
S-LOC 17L	1000/24	501 (500-1/2)	1000/55	501 (500-1)
<b>C</b> CIRCLING	1040-1 539 (600-1)	1140-1 639 (700-1)	1160-1 3/4 659 (700-1 3/4)	1400-3 899 (900-3)

SE-1, 30 DEC 2021 to 27 JAN 2022

SE-1, 30 DEC 2021 to 27 JAN 2022