

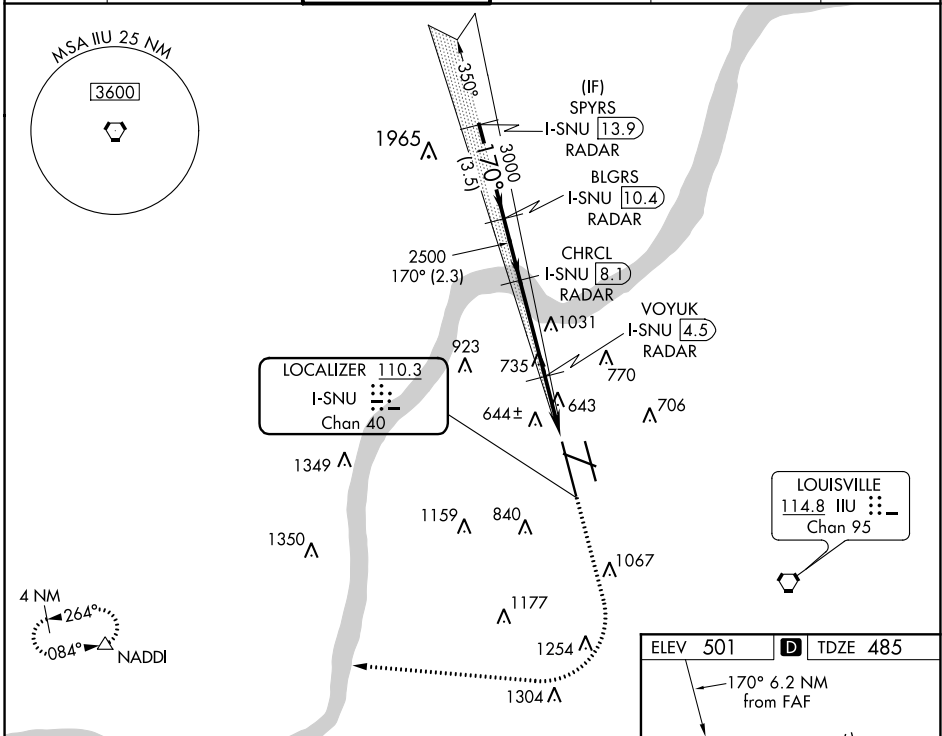
LOC/DME I-SNU <b>110.3</b> Chan <b>40</b>	APP CRS <b>170°</b>	Rwy Idg <b>10000</b> TDZE <b>485</b> Apt Elev <b>501</b>
---	------------------------	--

# ILS or LOC RWY 17R

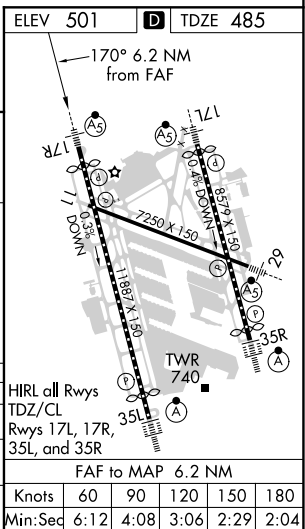
LOUISVILLE MUHAMMAD ALI INTL (SDF)

RNAV 1-GPS required. DME or RADAR required.	MALSR 	MISSED APPROACH: Climb to 1600 then climbing right turn to 3000 direct NADDI and hold.
Circling Rwy 11 NA at night. Simultaneous approach authorized. For inop ALS, increase S-LOC 17R Cat C/D visibility to RVR 6000.		

D-ATIS <b>118.725</b>	LOUISVILLE APP CON <b>132.075 327.0</b>	LOUISVILLE TOWER <b>124.2 257.8</b>	GND CON <b>121.7 348.6</b>	CLNC DEL <b>126.1 275.8</b>	CPDLC
--------------------------	--	--	-------------------------------	--------------------------------	-------



VGSi and ILS glidepath not coincident (VGSi Angle 3.00/TCH 75).		1600	3000	NADDI
SPYRS I-SNU [13.9] RADAR	BLGRS I-SNU [10.4] RADAR	CHRCL I-SNU [8.1] RADAR	VOYUK I-SNU [4.5] RADAR	*I-SNU [3] I-SNU [1.9]
4000	3000	2500	*1300	
GS 3.00° TCH 50				
	3.5 NM	2.3 NM	3.6 NM	1.5 NM
CATEGORY	A	B	C	D
S-ILS 17R	685/18 200 (200-½)			
S-LOC 17R	900/24	415 (500-½)	900/40	415 (500-¾)
CIRCLING	1040-1 539 (600-1)	1140-1 639 (700-1)	1160-1¾ 659 (700-1¾)	1400-3 899 (900-3)



SE-1, 30 DEC 2021 to 27 JAN 2022

SE-1, 30 DEC 2021 to 27 JAN 2022