
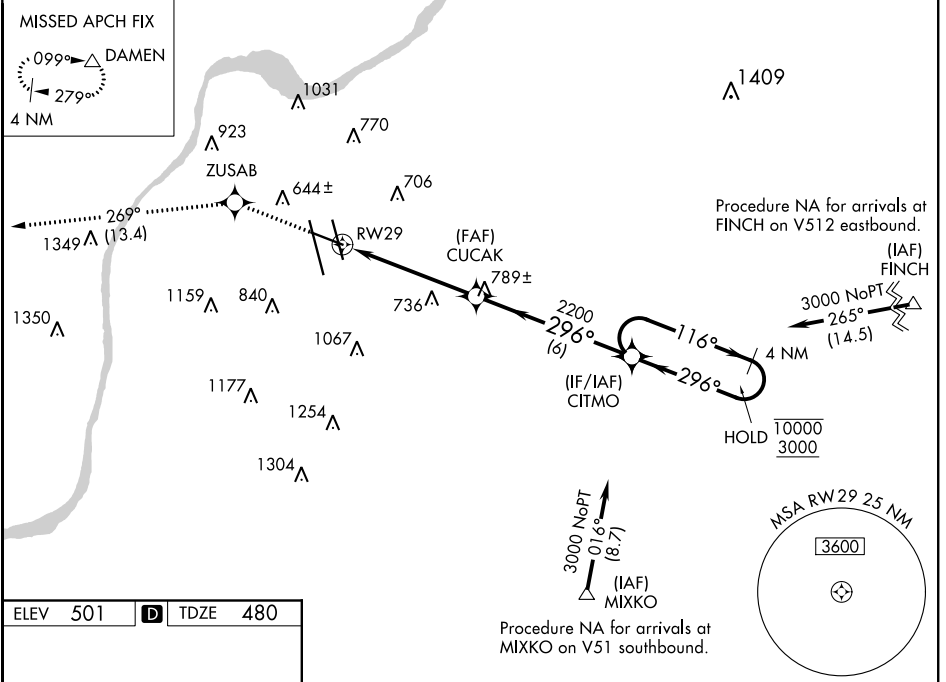


WAAS CH 93643 W29A	APP CRS 296°	Rwy Idg 7250 TDZE 480 Apt Elev 501
--	------------------------	---

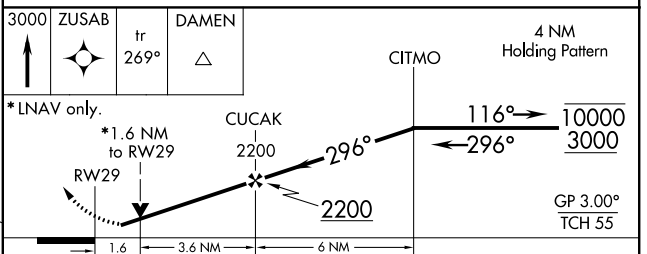
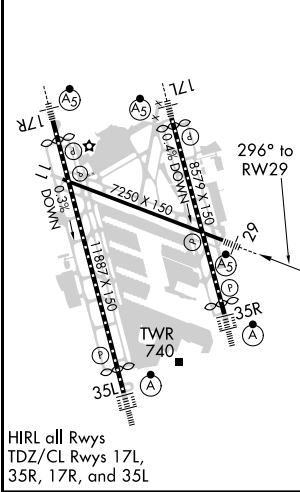
RNAV (GPS) RWY 29

LOUISVILLE MUHAMMAD ALI INTL (SDF)

RNP APCH.		LOUISVILLE TOWER 124.2 257.8		GND CON 121.7 348.6	CLNC DEL 126.1 275.8	CPDLC
<p>▽ Circling Rwy 11 NA at night. Rwy 29 helicopter visibility reduction below RVR 4000 NA. For uncompensated Baro-VNAV systems, LNAV/VNAV NA below -16°C or above 54°C. For inop ALS, increase LPV all Cats visibility and LNAV Cats A/B visibility to RVR 5000.</p>				<p>MISSED APPROACH: Climb to 3000 direct ZUSAB and on track 269° to DAMEN and hold.</p>		



ELEV 501	D	TDZE 480
----------	----------	----------



CATEGORY	A	B	C	D
LPV DA	773/40 293 (300-¾)			
LNAV/VNAV DA	943/50 463 (500-1)			
LNAV MDA	1040/40	560 (600-¾)	1040/50 560 (600-1¼)	1040/60 560 (600-1¼)
C CIRCLING	1040-1 539 (600-1)	1140-1 639 (700-1)	1160-1¼ 659 (700-1¼)	1400-3 899 (900-3)

SE-1, 30 DEC 2021 to 27 JAN 2022

SE-1, 30 DEC 2021 to 27 JAN 2022