

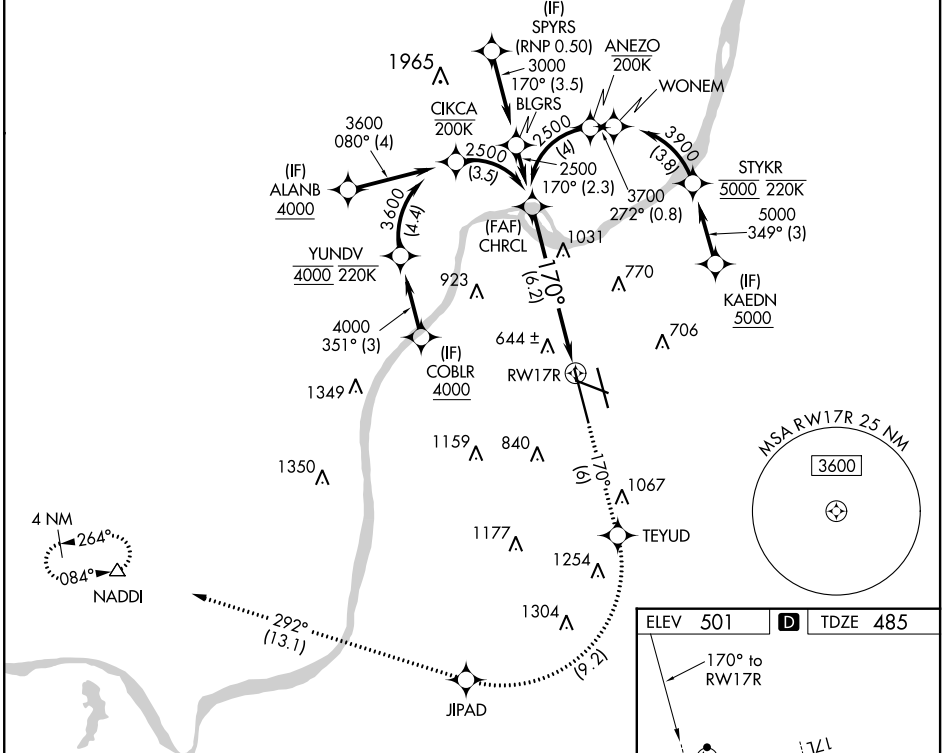
APP CRS	Rwy Idg <b>10000</b>
<b>170°</b>	TDZE <b>485</b>
	Apt Elev <b>501</b>

# RNAV (RNP) Z RWY 17R

LOUISVILLE MUHAMMAD ALI INTL (SDF)

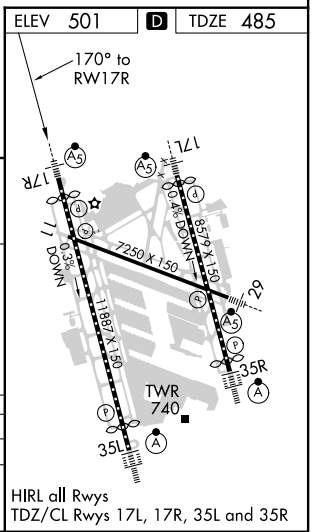
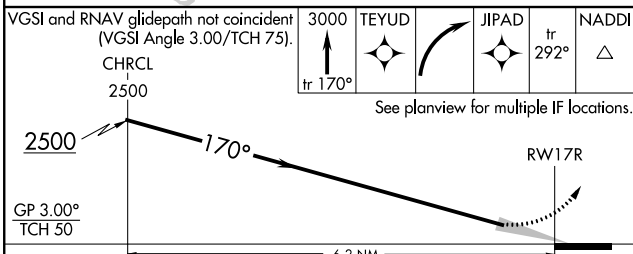
RNP AR APCH. RF required.		MALSR	MISSED APPROACH: Climb to 3000 on track 170° to TEYUD right turn to JIPAD and on track 292° to NADDI and hold.
<p>For uncompensated Baro-VNAV systems, procedure NA below -14°C or above 54°C. For inop ALS, increase RNP 0.30 all Cats visibility to 1 3/8 SM. Simultaneous approach authorized, except for arrivals at KAEDN, ALANB, and COBLR.</p>			

D-ATIS <b>118.725</b>	LOUISVILLE APP CON <b>132.075 327.0</b>	LOUISVILLE TOWER <b>124.2 257.8</b>	GND CON <b>121.7 348.6</b>	CLNC DEL <b>126.1 275.8</b>	CPDLC
--------------------------	--	--	-------------------------------	--------------------------------	-------



SE-1, 30 DEC 2021 to 27 JAN 2022

SE-1, 30 DEC 2021 to 27 JAN 2022



CATEGORY	A	B	C	D
RNP 0.30 DA		974/60	489 (500-1)	

**AUTHORIZATION REQUIRED**