

RNAV (RNP) Z RWY 35L


LOUISVILLE MUHAMMAD ALI INTL (SDF)

APP CRS	Rwy Idg	10000
350°	TDZE	464
	Apt Elev	501

RNP AR APCH.

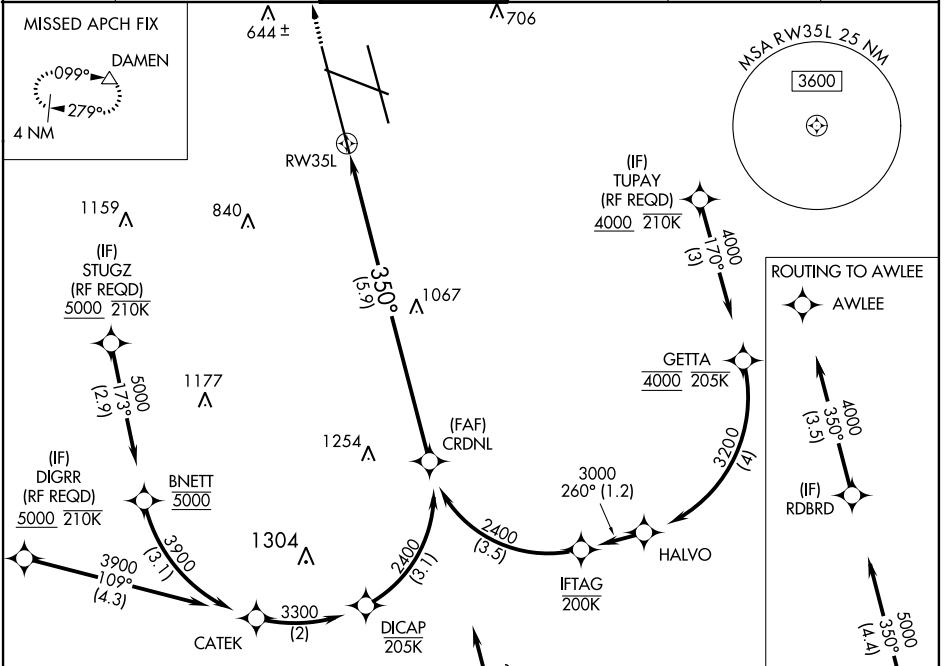
▼ For uncompensated Baro-VNAV systems, procedure NA below -14°C or above 54°C. Simultaneous approach authorized, except for arrivals at STUGZ, DIGRR, and TUPAY.

ALSF-2

▲ 

MISSED APPROACH: Climb to 1000 then climbing left turn to 3000 direct DAMEN and hold.

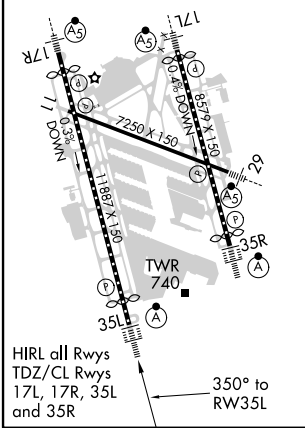
D-ATIS	LOUISVILLE APP CON	LOUISVILLE TOWER	GND CON	CLNC DEL	CPDLC
118.725	132.075 327.0	124.2 257.8	121.7 348.6	126.1 275.8	



SE-1, 30 DEC 2021 to 27 JAN 2022

SE-1, 30 DEC 2021 to 27 JAN 2022

ELEV 501	D	TDZE 464
----------	----------	----------



ROUTING TO AWLEE

AWLEE
3500 (3.5)
3500 (4.1)
5000 (1.4)

Procedure NA for arrivals at BRBON on V5-513 southbound.

SEE INSET FOR ROUTING TO AWLEE

AWLEE
3000
1000

DAMEN ▲
VGSi and RNAV glidepath not coincident (VGSi Angle 3.00/TCH 75).

CRDNL 2400
GP 3.00°
TCH 59

RW35L 350°
2400
5.9 NM

See Planview for multiple IF locations.

CATEGORY	A	B	C	D
RNP 0.12 DA		874/45	410 (400-%)	
RNP 0.30 DA		914/50	450 (500-1)	

AUTHORIZATION REQUIRED