

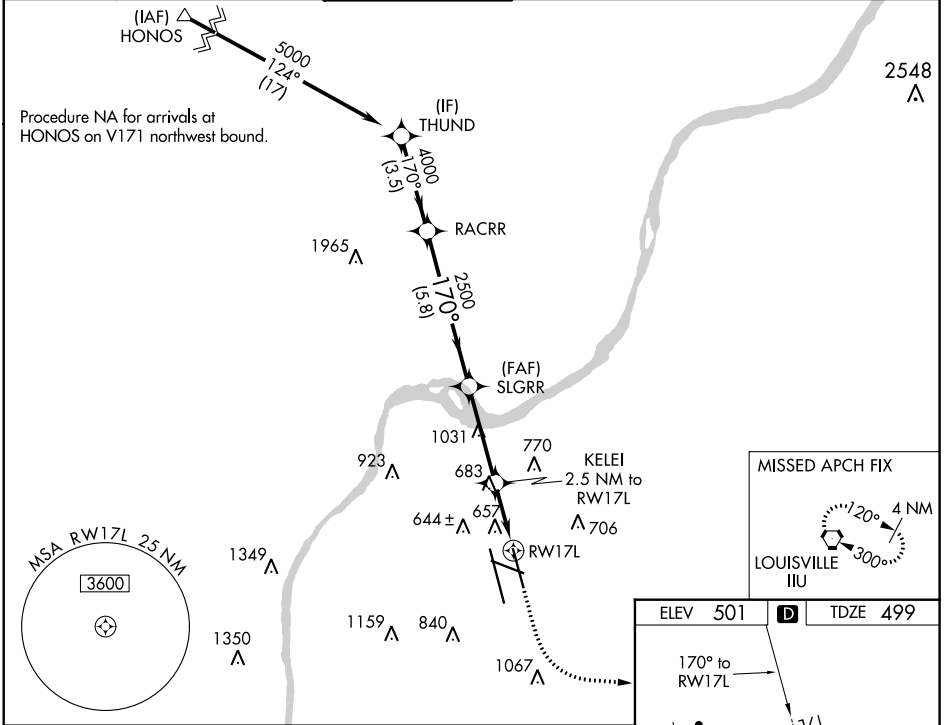
WAAS CH 90101 W17B	APP CRS 170°	Rwy Idg TDZE Apt Elev	7800 499 501
--	------------------------	-----------------------------	---

RNAV (GPS) Y RWY 17L

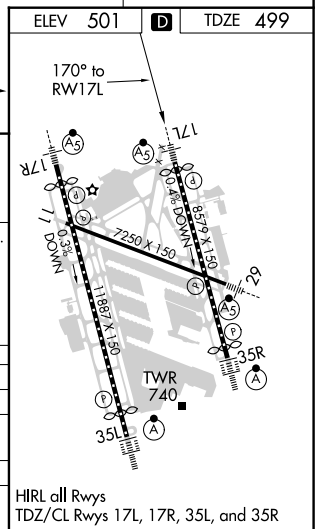
LOUISVILLE MUHAMMAD ALI INTL (SDF)

RNP APCH.	MALSR	MISSED APPROACH: Climb to 1000 then climbing left turn to 3000 direct IIL VORTAC and hold, continue climb-in-hold to 3000.
<p>⚠ Circling Rwy 11 NA at night. Simultaneous approach authorized.</p> <p>For uncompensated Baro-VNAV systems, LNAV/VNAV NA below -14°C or above 54°C. LNAV procedure NA during simultaneous operations. Use of FD or AP required during simultaneous operations.</p>		

D-ATIS 118.725	LOUISVILLE APP CON 132.075 327.0	LOUISVILLE TOWER 124.2 257.8	GND CON 121.7 348.6	CLNC DEL 126.1 275.8	CPDLC
--------------------------	--	--	-------------------------------	--------------------------------	-------



THUND	VGSI and RNAV glidepath not coincident (VGSI Angle 3.32/TCH 71).			
RACRR	SLGRR	KELEI	1000	3000
5000	2500	2.5 NM to RWY 17L	↑	⤵
170°		*1 NM to RWY 17L		IIL
4000		*1320		
GP 3.00°				
TCH 55				
	3.5 NM	5.8 NM	3.6 NM	1.5 NM
CATEGORY	A	B	C	D
LPV DA		699/18	200 (200-½)	
LNAV/VNAV DA		818/24	319 (400-½)	
LNAV MDA	920/24	421 (500-½)	920/40	421 (500-¾)
C CIRCLING	1040-1 539 (600-1)	1140-1 639 (700-1)	1160-1¾ 659 (700-1¾)	1400-3 899 (900-3)



SE-1, 30 DEC 2021 to 27 JAN 2022

SE-1, 30 DEC 2021 to 27 JAN 2022