

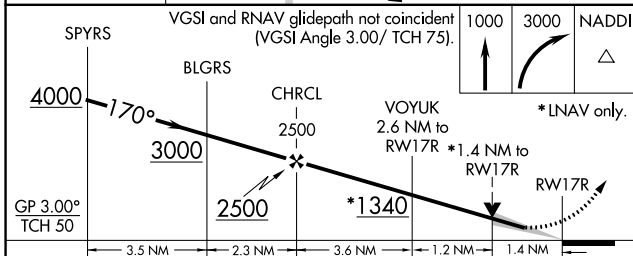
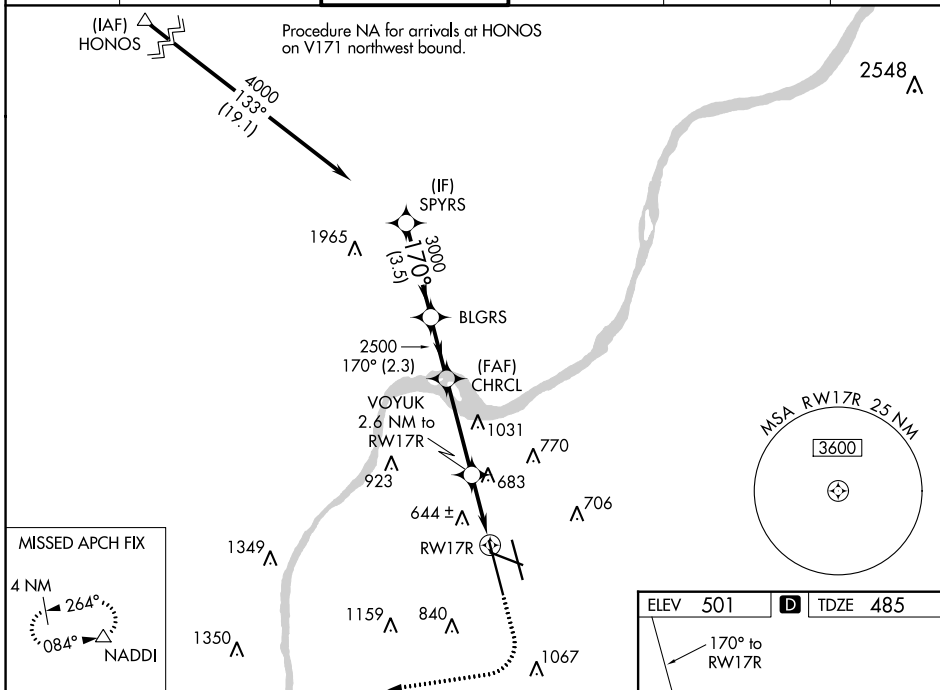
WAAS CH <b>57909</b> <b>W17A</b>	APP CRS <b>170°</b>	Rwy ldg <b>10000</b> TDZE <b>485</b> Apt Elev <b>501</b>
--	------------------------	--

# RNAV (GPS) Y RWY 17R

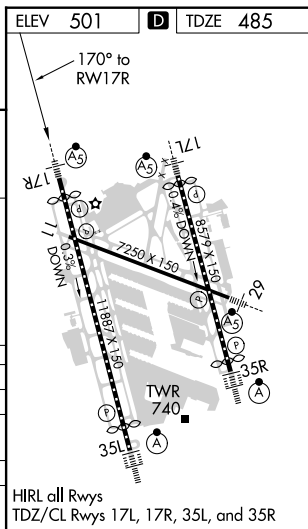
LOUISVILLE MUHAMMAD ALI INTL (SDF)

RNP APCH.	MALSR	MISSED APPROACH: Climb to 1000 then climbing right turn to 3000 direct NADDI and hold.
Circling Rwy 11 NA at night. Simultaneous approach authorized. LNAV procedure NA during simultaneous operations. For uncompensated Baro-VNAV systems, LNAV/VNAV NA below -14°C or above 54°C. Use of FD or AP required during simultaneous operations. For inop ALS, increase LNAV Cats C/D visibility to 1½ SM.		

D-ATIS <b>118.725</b>	LOUISVILLE APP CON <b>132.075 327.0</b>	LOUISVILLE TOWER <b>124.2 257.8</b>	GND CON <b>121.7 348.6</b>	CLNC DEL <b>126.1 275.8</b>	CPDLC
--------------------------	--	--	-------------------------------	--------------------------------	-------



CATEGORY	A	B	C	D
LPV DA		685/18	200 (200-½)	
LNAV/VNAV DA		932/55	447 (500-1)	
LNAV MDA	1000/24	515 (500-½)	1000/55	515 (500-1)
CIRCLING	1040-1 539 (600-1)	1140-1 639 (700-1)	1160-1¾ 659 (700-1¾)	1400-3 899 (900-3)



SE-1, 30 DEC 2021 to 27 JAN 2022

SE-1, 30 DEC 2021 to 27 JAN 2022