

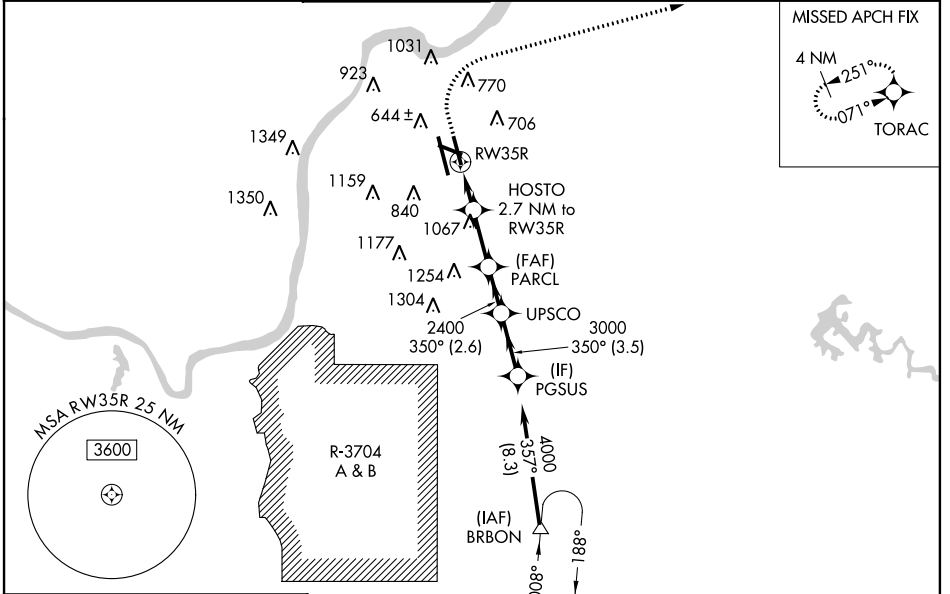
WAAS CH <b>70709</b> <b>W35D</b>	APP CRS <b>350°</b>	Rwy Idg TDZE Apt Elev	<b>7800</b> <b>480</b> <b>501</b>
--	------------------------	-----------------------------	---

# RNAV (GPS) Y RWY 35R

LOUISVILLE MUHAMMAD ALI INTL (SDF)

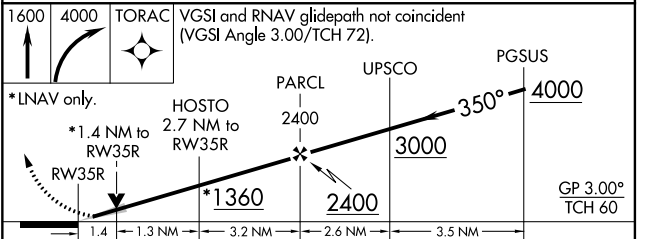
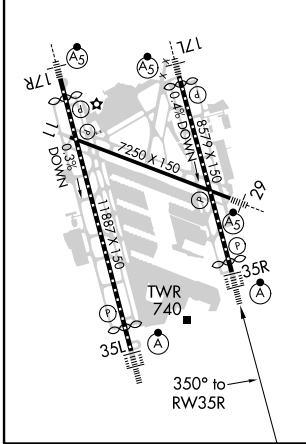
RNP APCH.		ALSF-2	MISSED APPROACH: Climb to 1600 then climbing right turn to 4000 direct TORAC and hold.
<p><b>⚠</b> Circling Rwy 11 NA at night. Simultaneous approach authorized. LNAV procedure NA during simultaneous operations. Use of FD or AP required during simultaneous operations. For uncompensated Baro-VNAV systems, LNAV/VNAV NA below -1.4°C or above 54°C. For inop ALS, increase LNAV/VNAV all Cats visibility to 1% SM.</p>			

D-ATIS <b>118.725</b>	LOUISVILLE APP CON <b>132.075 327.0</b>	<b>LOUISVILLE TOWER</b> <b>124.2 257.8</b>	GND CON <b>121.7 348.6</b>	CLNC DEL <b>126.1 275.8</b>	CPDLC
--------------------------	--	---	-------------------------------	--------------------------------	-------



ELEV 501	<b>D</b>	TDZE 480
----------	----------	----------

HIRL all Rwys  
TDZ/CL Rwys 17L, 17R, 35L, and 35R



CATEGORY	A	B	C	D
LPV DA		680/18	200 (200-1/2)	
LNAV/VNAV DA		909/50	429 (500-1)	
LNAV MDA	1000/24	520 (500-1/2)	1000/55	520 (500-1)
<b>C</b> CIRCLING	1040-1 539 (600-1)	1140-1 639 (700-1)	1160-1 3/4 659 (700-1 3/4)	1400-3 899 (900-3)

SE-1, 30 DEC 2021 to 27 JAN 2022

SE-1, 30 DEC 2021 to 27 JAN 2022