

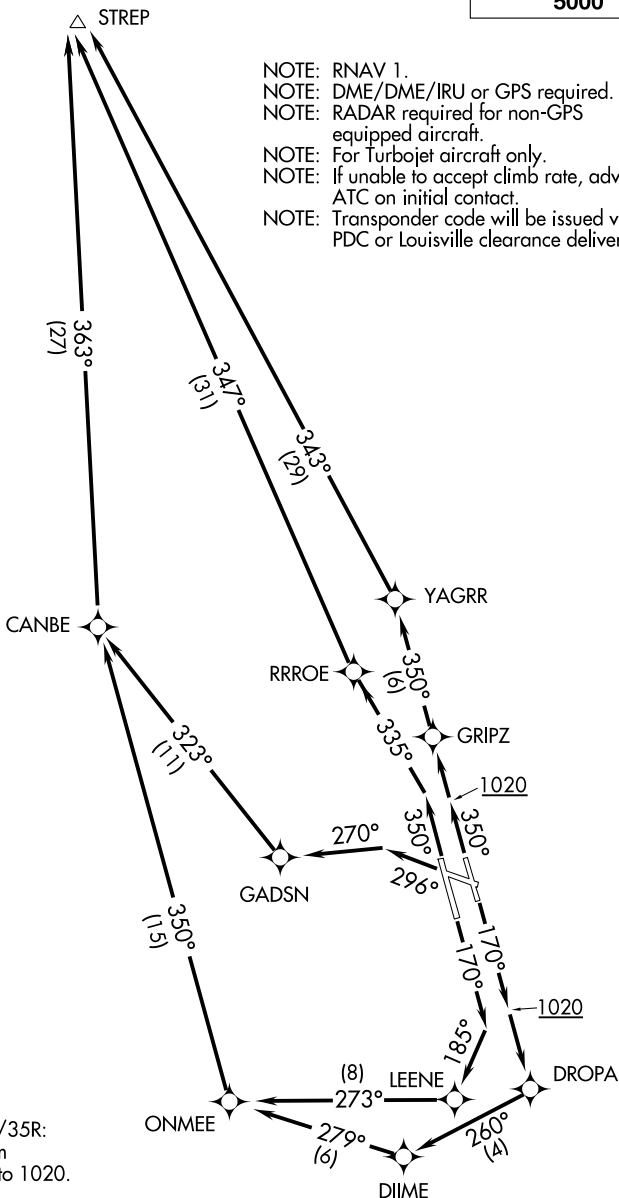
# STREP FIVE DEPARTURE (RNAV)

LOUISVILLE, KENTUCKY

D-ATIS 118.725  
 CLINC DEL  
 126.1 275.8  
 CPDLC  
 GND CON  
 121.7 348.6  
 LOUISVILLE TOWER  
 124.2 257.8  
 LOUISVILLE DEP CON  
 132.075 327.0

**TOP ALTITUDE:  
 5000**

- NOTE: RNAV 1.
- NOTE: DME/DME/IRU or GPS required.
- NOTE: RADAR required for non-GPS equipped aircraft.
- NOTE: For Turbojet aircraft only.
- NOTE: If unable to accept climb rate, advise ATC on initial contact.
- NOTE: Transponder code will be issued via PDC or Louisville clearance delivery.



TAKEOFF MINIMUMS:  
 Rwy 11: NA-ATC.  
 Rwys 17L/17R, 29, 35L/35R:  
 Standard with minimum  
 climb of 500' per NM to 1020.

(NARRATIVE ON FOLLOWING PAGE)

NOTE: Chart not to scale.

# STREP FIVE DEPARTURE (RNAV)

LOUISVILLE, KENTUCKY

SE-1, 30 DEC 2021 to 27 JAN 2022

SE-1, 30 DEC 2021 to 27 JAN 2022



DEPARTURE ROUTE DESCRIPTION

TAKEOFF RUNWAY 17L: Climb heading 170° to 1020, then direct DROPA, then on depicted route to STREP, thence....

TAKEOFF RUNWAY 17R: Climb heading 170° to intercept course 185° to LEENE, then on depicted route to STREP, thence....

TAKEOFF RUNWAY 29: Climb heading 296° to intercept course 270° to GADSN, then on depicted route to STREP, thence....

TAKEOFF RUNWAY 35L: Climb heading 350° to intercept course 335° to RRROE, then on depicted route to STREP, thence....

TAKEOFF RUNWAY 35R: Climb heading 350° to 1020, then direct GRIPZ, then on depicted route to STREP, thence....

....maintain 5000. Expect clearance to filed altitude 10 minutes after departure.

SE-1, 30 DEC 2021 to 27 JAN 2022

SE-1, 30 DEC 2021 to 27 JAN 2022