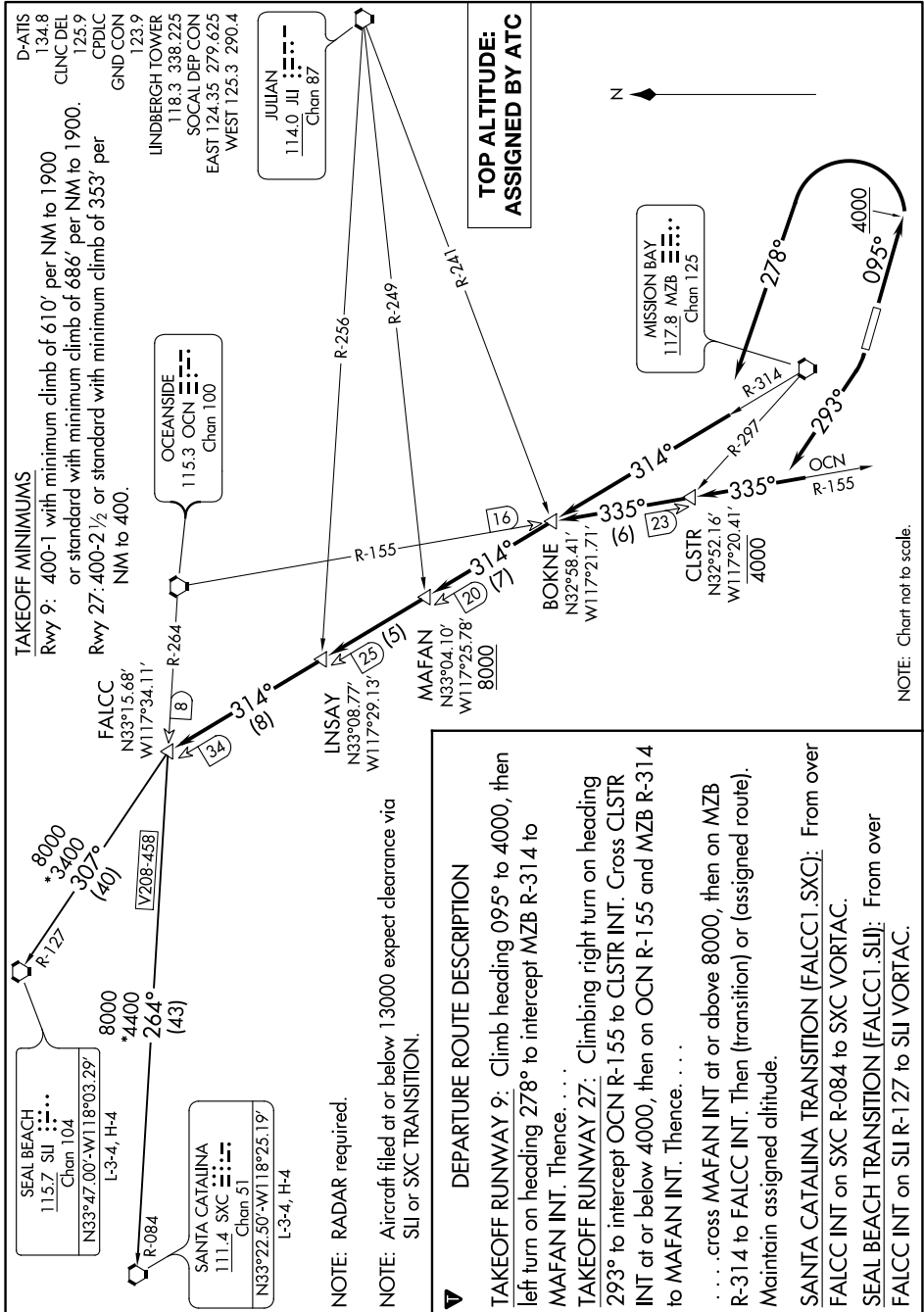


FALCC ONE DEPARTURE

AL-373 (FAA)

SAN DIEGO INTL (SAN)
SAN DIEGO, CALIFORNIA

SW-3, 30 DEC 2021 to 27 JAN 2022

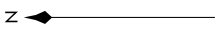


D-ATIS 134.8
CLNC DEL 125.9
CPDIC
GND CON 123.9
LINDERBERG TOWER 118.3 338.225
SOCAL DEP CON EAST 124.35 279.625
WEST 125.3 290.4

OCEANSIDE
1115.3 OCN
Chan 100

JULIAN
114.0 JII
Chan 87

**TOP ALTITUDE:
ASSIGNED BY ATC**



MISSION BAY
117.8 MZB
Chan 125

TAKEOFF MINIMUMS
Rwy 9: 400-1 with minimum climb of 610' per NM to 1900
or standard with minimum climb of 686' per NM to 1900.
Rwy 27: 400-2 1/2 or standard with minimum climb of 353' per
NM to 400.

FALCC
N33°15.68'
W117°34.11'

SEAL BEACH
115.7 SI
Chan 104
N33°47.00'-W118°03.29'
L-3-4, H-4

SANTA CATALINA
111.4 SXC
Chan 51
N33°22.50'-W118°25.19'
L-3-4, H-4

LINSAY
N33°08.77'
W117°29.13'

MAFAN
N33°04.10'
W117°25.78'
8000

BOKNE
N32°58.41'
W117°21.71'

CLSTR
N32°52.16'
W117°20.41'
4000

NOTE: RADAR required.
**NOTE: Aircraft filed at or below 13000 expect clearance via
SII or SXC TRANSITION.**

▼ DEPARTURE ROUTE DESCRIPTION
TAKEOFF RUNWAY 9: Climb heading 095° to 4000, then left turn on heading 278° to intercept MZB R-314 to MAFAN INT. Thence. . . .
TAKEOFF RUNWAY 27: Climbing right turn on heading 293° to intercept OCN R-155 to CLSTR INT. Cross CLSTR INT at or below 4000, then on OCN R-155 and MZB R-314 to MAFAN INT. Thence. . . .
. . . . cross MAFAN INT at or above 8000, then on MZB R-314 to FALCC INT. Then (transition) or (assigned route). Maintain assigned altitude.
SANTA CATALINA TRANSITION (FALCC1.SXC): From over FALCC INT on SXC R-084 to SXC VORTAC.
SEAL BEACH TRANSITION (FALCC1.SII): From over FALCC INT on SII R-127 to SII VORTAC.

NOTE: Chart not to scale.

FALCC ONE DEPARTURE

SW-3, 30 DEC 2021 to 27 JAN 2022