

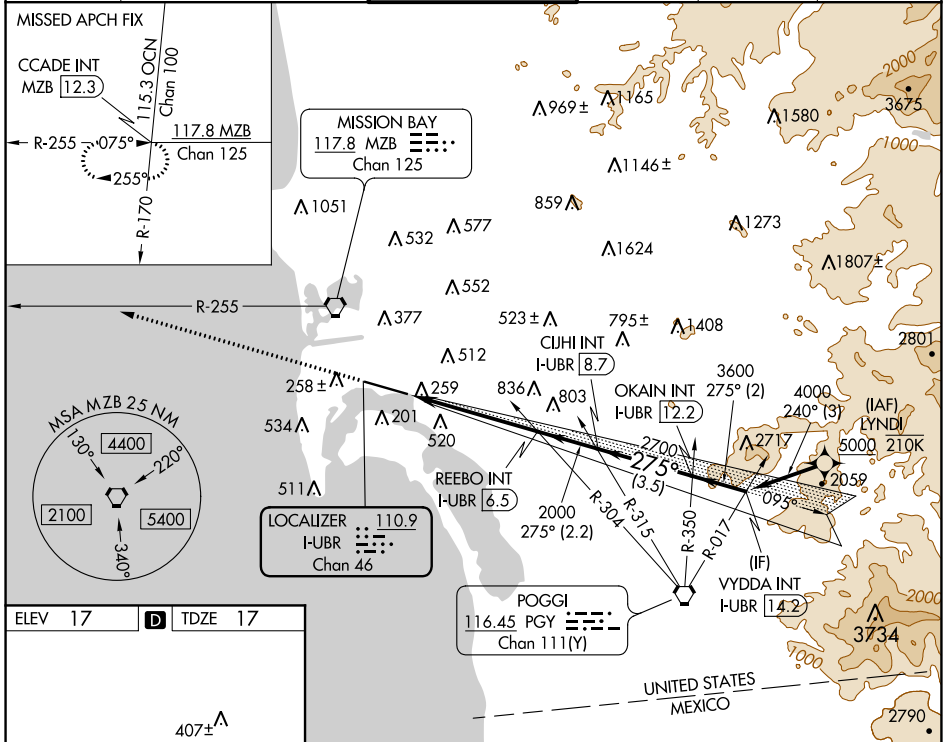
LOC/DME I-UBR 110.9 Chan 46	APP CRS 275°	Rwy ldg TDZE Apt Elev 7590 17 17
---	------------------------	--

LOC RWY 27

SAN DIEGO INTL (SAN)

From LYNDI: RNAV 1-DME/DME/IRU or GPS required.	MAIS A_4	MISSED APPROACH: Climb to 2500 on heading 275° and on MZB VORTAC R-255 to CCADE INT/ MZB 12.3 DME and hold.
RNAV 1-DME/DME/IRU or GPS required for procedure entry.		
<p>▼ Rwy 27 helicopter visibility reduction below 1 SM NA. Circling NA north of Rwy 9-27. Inop table does not apply to Cats A and B. For inop ALS, increase S-27 Cats C and D visibility to 1½ SM.</p>		

D-ATIS 134.8	SOCAL APP CON 119.6 363.1 (WEST) 124.35 279.625 (EAST)	LINDBERGH TOWER 118.3 338.225	GND CON 123.9	CLNC DEL 125.9	CPDLC
------------------------	--	---	-------------------------	--------------------------	-------



ELEV 17	D	TDZE 17			
<p>407± TWR 159 275° 5.2 NM from FAF A₁₇₅ 70 48 A₁₇₆</p>					
<p>TDZ/CL Rwy 9 and 27 HIRL Rwy 9-27</p>					
<p>FAF to MAP 5.2 NM</p>					
Knots	60	90	120	150	180
Min:Sec	5:12	3:28	2:36	2:05	1:44

2500	MZB R-255	CCADE INT	VYDDA INT I-UBR 14.2	
hdg 275°				
	REEBO INT I-UBR 6.5	CUHI INT I-UBR 8.7	OKAIN INT I-UBR 12.2	
	I-UBR 1.3	2700	4000	
	≤ 3.50° TCH 65			
	5.2 NM	2.2 NM	3.5 NM	2 NM
CATEGORY	A	B	C	D
S-27	680-1	663 (700-1)	680-1¾	663 (700-1¾)
C CIRCLING	820-1	803 (900-1)	840-2½	940-3
			823 (900-2½)	923 (1000-3)

SW-3, 30 DEC 2021 to 27 JAN 2022

SW-3, 30 DEC 2021 to 27 JAN 2022