

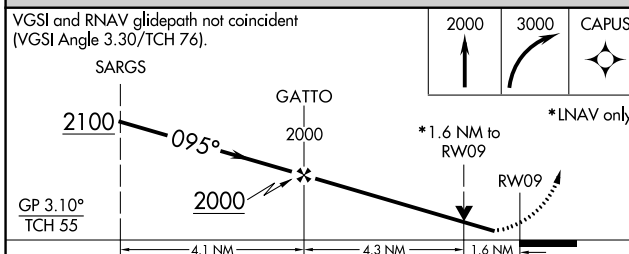
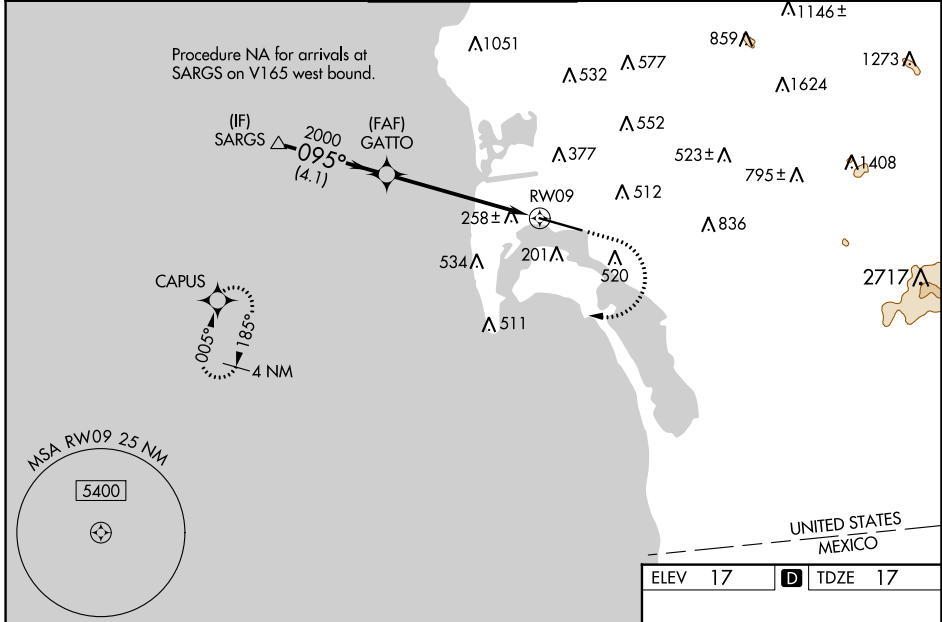
WAAS CH 49237 W09A	APP CRS 095°	Rwy Idg 7280 TDZE 17 Apt Elev 17
--	------------------------	---

RNAV (GPS) RWY 9

SAN DIEGO INTL (SAN)

RNP APCH.	<p>⚠ Circling NA north of Rwy 9-27. For uncompensated Baro-VNAV systems, LNAV/VNAV NA below 6°C or above 47°C. When Circling to Rwy 27 at night, operational VGSI required, remain on or above VGSI glidepath until threshold. Rwy 9 helicopter visibility reduction below RVR 4000 NA. Inop table does not apply to LPV all Cats. For inop ALS, increase LNAV Cats A/B visibility to RVR 5500.</p>	MALSRL 	MISSED APPROACH: Climb to 2000 then climbing right turn to 3000 direct CAPUS and hold.
-----------	--	------------	--

D-ATIS 134.8	SOCAL APP CON 119.6 363.1 (WEST) 124.35 279.625 (EAST)	LINDBERGH TOWER 118.3 338.225	GND CON 123.9	CLNC DEL 125.9	CPDLC
------------------------	--	---	-------------------------	--------------------------	-------



ELEV 17	D TDZE 17

CATEGORY	A	B	C	D
LPV DA		262/40	245 (300-¾)	
LNAV/VNAV DA		621-1½	604 (700-1½)	
LNAV MDA	600/40	583 (600-¾)	600-1¼	583 (600-1¼)
C CIRCLING	800-1 783 (800-1)	820-1 803 (900-1)	820-2¼ 803 (900-2¼)	940-3 923 (1000-3)

SW-3, 30 DEC 2021 to 27 JAN 2022

SW-3, 30 DEC 2021 to 27 JAN 2022