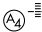



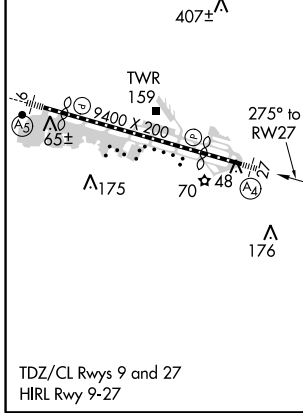
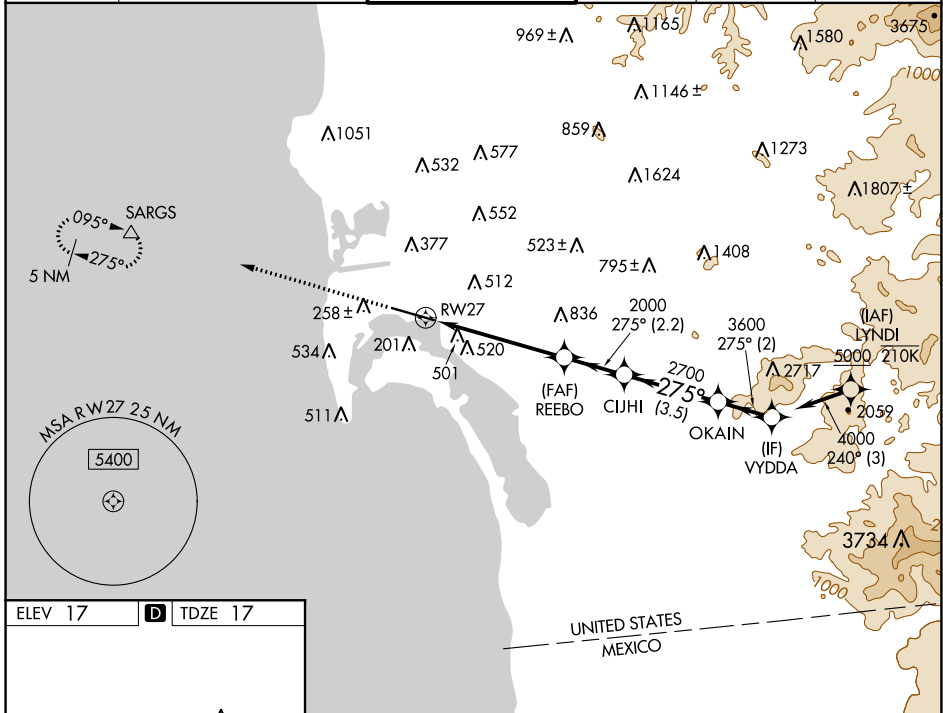
WAAS CH 82527 W27A	APP CRS 275°	Rwy Idg TDZE Apt Elev	7590 17 17
--	------------------------	-----------------------------	---------------------------------------


RNAV (GPS) Y RWY 27

SAN DIEGO INTL (SAN)

RNP APCH.	MALS 	MISSED APPROACH: Climb to 2500 direct SARGs and hold.
<p> Rwy 27 helicopter visibility reduction below RVR 5000 NA. Straight-in Rwy 27 at night, operational VGSI required, remain on or above VGSI glidepath until threshold. Circling NA north of Rwy 9-27. For inop ALS, increase LNAV Cts C/D visibility to 2 SM. Inop table does not apply to LP Cts A/B and LNAV Cat A.</p>		

D-ATIS 134.8	SOCAL APP CON 119.6 363.1 (WEST) 124.35 279.625 (EAST)	LINDBERGH TOWER 118.3 338.225	GND CON 123.9	CLNC DEL 125.9	CPDLC
------------------------	--	---	-------------------------	--------------------------	-------



ELEV 17	D	TDZE 17		
2500	SARGs 	VYDDA		
RWY 27	REEBO	CIJHI	OKAIN	VYDDA
	2000	2700	3600	4000
	5.2 NM	2.2 NM	3.5 NM	2 NM
CATEGORY	A	B	C	D
LP MDA	680/50	663 (700-1)	680-1¾	663 (700-1¾)
LNAV MDA	760/50 743 (800-1)	760/55 743 (800-1)	760-1⅞	743 (800-1⅞)
C CIRCLING	820-1 803 (900-1)	820-1¼ 803 (900-1¼)	820-2½ 803 (900-2½)	940-3 923 (1000-3)

SW-3, 30 DEC 2021 to 27 JAN 2022

SW-3, 30 DEC 2021 to 27 JAN 2022