

SOCAL APP CON  
 119.6 363.1  
 D-ATIS  
 134.8

LOS ANGELES  
 113.6 LAX  
 Chan 83  
 N33°55.99' - W118°25.92'  
 L-3-4-7, H-4

**VERTICAL NAVIGATION  
 PLANNING INFORMATION**

Expect FL270

4500  
 133°  
 (5)

EIREE  
 N33°13.91' - W117°53.46'

114°  
 (8)

SHAMU  
 N33°08.88' - W117°45.97'  
**VERTICAL NAVIGATION  
 PLANNING INFORMATION**  
 Expect 15000 250K

135°  
 (25)\*

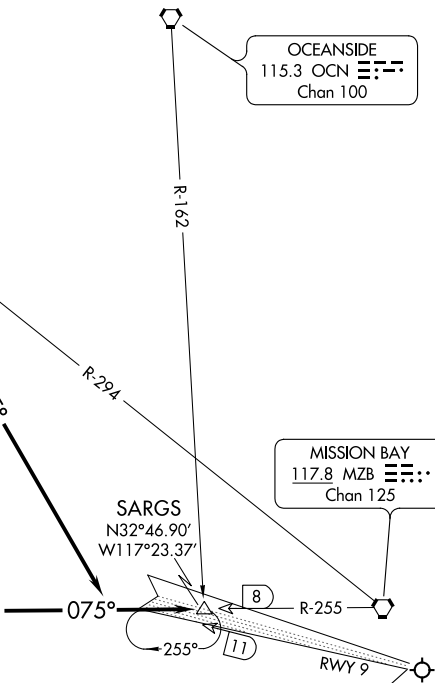
\*Aprx dist to  
 MZB R-255

OCEANSIDE  
 115.3 OCN  
 Chan 100

MISSION BAY  
 117.8 MZB  
 Chan 125

SARGS  
 N32°46.90' - W117°23.37'

LOCALIZER  
 111.55  
 I-SAN  
 Chan 52 (Y)



NOTE: Expect RADAR vectors to San Diego Intl Rwy 9 localizer.

NOTE: DME required.

NOTE: RADAR required.

NOTE: Chart not to scale.

**ARRIVAL ROUTE DESCRIPTION**

LOS ANGELES TRANSITION (LAX.SHAMU1): From over LAX VORTAC via LAX R-132 and MZB R-294 to SHAMU FIX. Thence. . .

. . . From over SHAMU FIX via heading 135° to intercept MZB R-255 then via MZB R-255 to SARGS INT. Expect RADAR vectors to SAN Rwy 9 localizer.

SW-3, 30 DEC 2021 to 27 JAN 2022

SW-3, 30 DEC 2021 to 27 JAN 2022