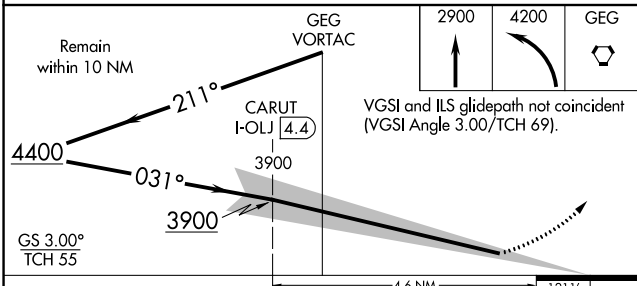
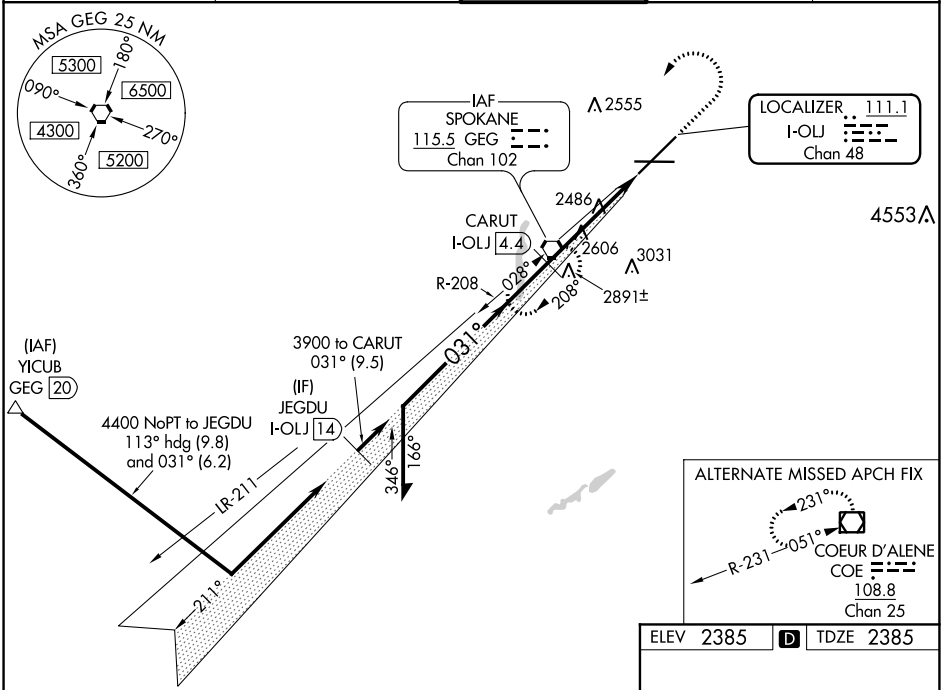


LOC/DME I-OLJ <b>111.1</b> Chan 48	APP CRS <b>031°</b>	Rwy Idg TDZE <b>2385</b> Apt Elev <b>2385</b>
--	------------------------	---

# ILS RWY 3 (CAT II & III)

SPOKANE INTL (GEG)

<p><b>⚠</b> CAT II: RVR 1000 authorized with specific OPSPEC, MSPEC, or LOA approval and use of autoland or HUD to touchdown.</p>	ALS-F2	MISSED APPROACH: Climb to 2900 then climbing left turn to 4200 direct GEG VORTAC and hold.		
	<p>ATIS <b>124.325 254.375</b></p>	<p>SPOKANE APP CON <b>123.75 282.25</b> (205°-025°) <b>133.35 263.0</b> (026°-204°)</p>	<p>SPOKANE TOWER <b>118.3 278.3</b></p>	<p>GND CON <b>121.9 348.6</b></p>



ELEV 2385	D	TDZE 2385
-----------	---	-----------

0.5% DOWN, 0.8% UP, 1.002 X 150

8199 X 150 ±

TWR 2651

TDZ/CL Rwy 3 and 21  
REL Rwy 8 and 26  
HIRL Rwy 3-21  
MIRL Rwy 8-26

CATEGORY	A	B	C	D
S-ILS 3	CAT II RA 104/12 100 DA 2485			
S-ILS 3	CAT III RVR 03			

**CATEGORY II & III ILS - SPECIAL AIRCREW & AIRCRAFT CERTIFICATION REQUIRED**

NW-1, 30 DEC 2021 to 27 JAN 2022

NW-1, 30 DEC 2021 to 27 JAN 2022