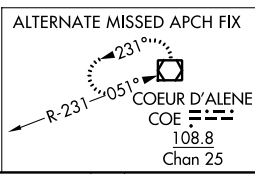
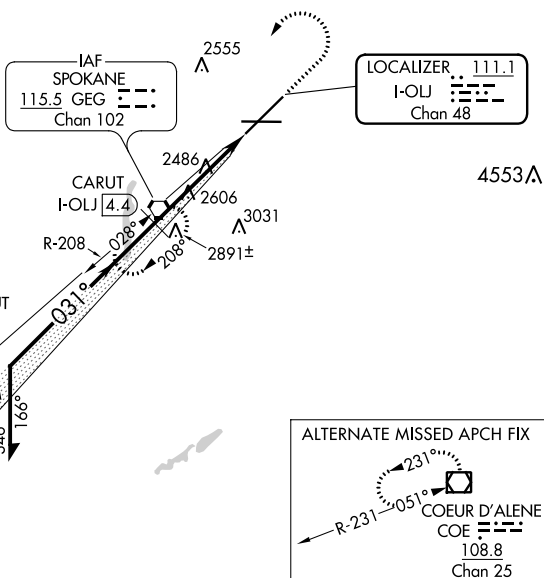
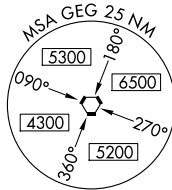


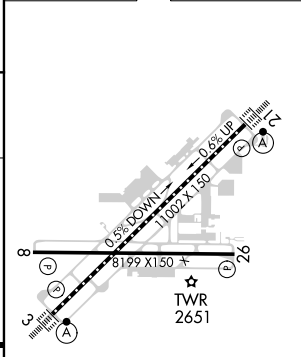
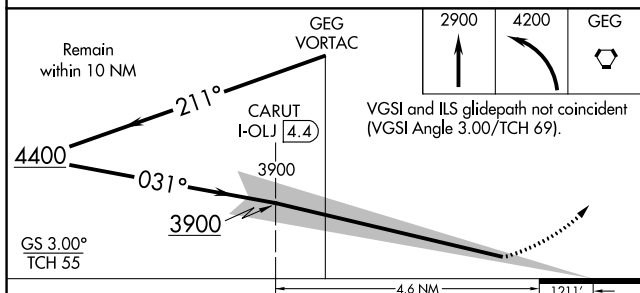
LOC/DME I-OLJ 111.1 Chan 48	APP CRS 031°	Rwy Ldg TDZE Apt Elev	11002 2385 2385
--	------------------------	-----------------------------	--

ILS RWY 3 (SA CAT I)
SPOKANE INTL (GEG)

 Requires specific OPSPEC, MSPEC, or LOA approval and use of HUD to DH.	ALSF-2 	MISSED APPROACH: Climb to 2900 then climbing left turn to 4200 direct GEG VORTAC and hold.		
	ATIS 124.325 254.375	SPOKANE APP CON 123.75 282.25 (205°-025°) 133.35 263.0 (026°-204°)	SPOKANE TOWER 118.3 278.3	GND CON 121.9 348.6



ELEV 2385	D	TDZE 2385
-----------	---	-----------



CATEGORY	A	B	C	D
S-ILS 3	RA 154/14 150 DA 2535			
SA CATEGORY I ILS - SPECIAL AIRCREW & AIRCRAFT CERTIFICATION REQUIRED				

TDZ/CL Rwy 3 and 21
 REIL Rwy 8 and 26
 HIRL Rwy 3-21
 MIRL Rwy 8-26

NW-1, 30 DEC 2021 to 27 JAN 2022

NW-1, 30 DEC 2021 to 27 JAN 2022