

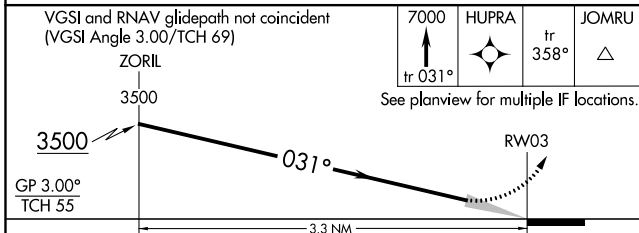
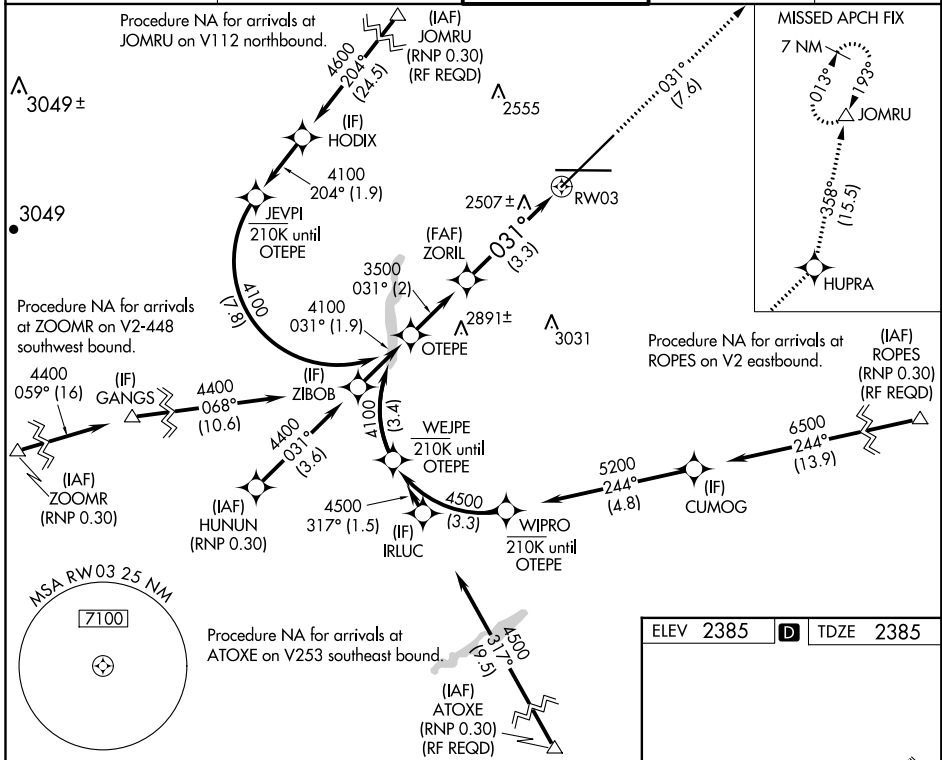
APP CRS 031°	Rwy Idg TDZE Apt Elev	11002 2385 2385
------------------------	-----------------------------	--

RNAV (RNP) Z RWY 3

SPOKANE INTL (GEG)

RNP AR APCH.	ALSF-2	MISSED APPROACH: Climb to 7000 on track 031° to HUPRA and on track 358° to JOMRU and hold.
<p>▼ For uncompensated Baro-VNAV systems, procedure NA below -18°C or above 53°C.</p>		

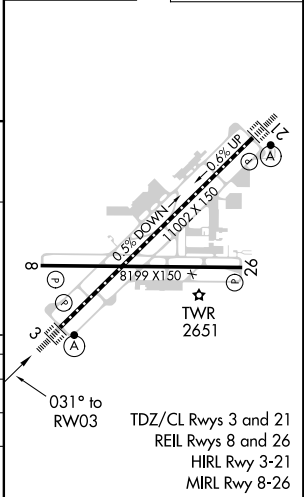
ATIS 124.325 254.375	SPOKANE APP CON 123.75 282.25 (205°-025°) 133.35 263.0 (026°-204°)	SPOKANE TOWER 118.3 278.3	GND CON 121.9 348.6	CLNC DEL 127.55
--------------------------------	--	-------------------------------------	-------------------------------	---------------------------



ELEV 2385	TDZE 2385
-----------	-----------

CATEGORY	A	B	C	D
RNP 0.11 DA		2716/26	331 (400-1/2)	
RNP 0.30 DA		2842/45	457 (500-7/8)	

AUTHORIZATION REQUIRED



NW-1, 30 DEC 2021 to 27 JAN 2022

NW-1, 30 DEC 2021 to 27 JAN 2022