

| | | |
|-------------|----------|-------------|
| APP CRS | Rwy Idg | 8199 |
| 076° | TDZE | 2376 |
| | Apt Elev | 2385 |

RNAV (RNP) Z RWY 8

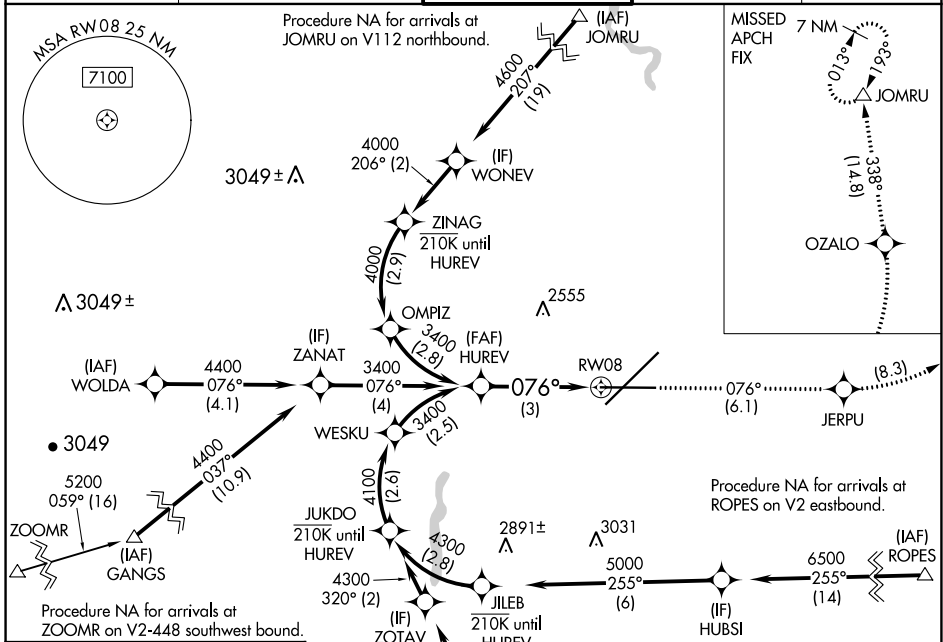
SPOKANE INTL (GEG)

RNP AR APCH. RF required.

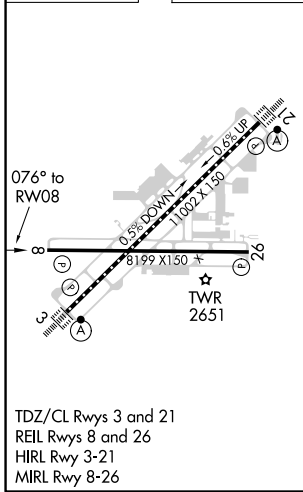
▼ For uncompensated Baro-VNAV systems, procedure NA below -18°C or above 53°C.

MISSED APPROACH: Climb to 7000 on track 076° to JERPU, left turn to OZALO, and on track 338° to JOMRU and hold.

| | | | | |
|------------------------|---|--------------------|--------------------|---------------|
| ATIS | SPOKANE APP CON | SPOKANE TOWER | GND CON | CLNC DEL |
| 124.325 254.375 | 123.75 282.25 (205°-025°) 133.35 263.0 (026°-204°) | 118.3 278.3 | 121.9 348.6 | 127.55 |



ELEV 2385 **D** TDZE 2376



| | | | | |
|---|---|---------|-------|-------|
| HUREV 3400 | 7000 | JERPU | OZALO | JOMRU |
| | tr 076° | tr 338° | | |
| VGS1 and RNAV glidepath not coincident. (VGS1 Angle 3.00/TCH 45). | | | | |
| GP 3.00° TCH 60 | See planview for multiple IF locations. | | | |
| 3 NM | | | | |
| CATEGORY | A | B | C | D |
| RNP 0.11 DA | 2665-7/8 289 (300-7/8) | | | |
| RNP 0.30 DA | 2869-1 3/8 493 (500-1 3/8) | | | |
| AUTHORIZATION REQUIRED | | | | |

NW-1, 30 DEC 2021 to 27 JAN 2022

NW-1, 30 DEC 2021 to 27 JAN 2022