

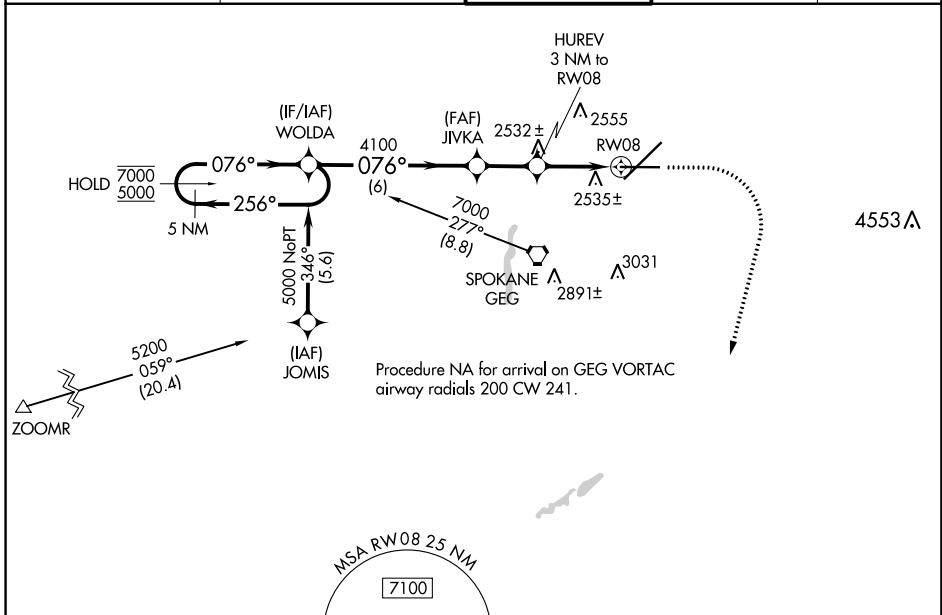
WAAS CH <b>48801</b> <b>W08A</b>	APP CRS <b>076°</b>	Rwy Idg TDZE Apt Elev	<b>8199</b> <b>2376</b> <b>2385</b>
--	------------------------	-----------------------------	---

# RNAV (GPS) Y RWY 8

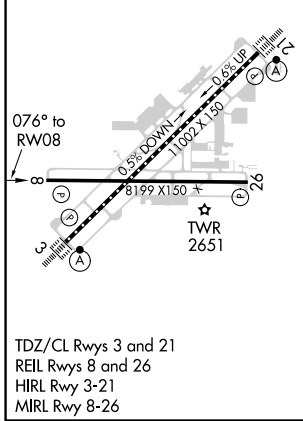
SPOKANE INTL (GEG)

RNP APCH.	MISSED APPROACH: Climb to 2900, then climbing right turn to 6000 direct ATOXE and hold.
<p>▼ For uncompensated Baro-VNAV systems, LNAV/VNAV NA below -18°C or above 52°C.</p>	

ATIS <b>124.325 254.375</b>	SPOKANE APP CON <b>123.75 282.25</b> (205°-025°) <b>133.35 263.0</b> (026°-204°)	SPOKANE TOWER <b>118.3 278.3</b>	GND CON <b>121.9 348.6</b>	CLNC DEL <b>127.55</b>
--------------------------------	--	-------------------------------------	-------------------------------	---------------------------



ELEV 2385	<b>D</b>	TDZE 2376
-----------	----------	-----------



5 NM Holding Pattern		WOLDA	JIVKA	HUREV 3 NM to RW08	2900	6000	ATOXE
7000 ← 256°		→ 076°	4100	→ 076°	↑	↘	△
5000 ← 076°		→ 076°	4100	→ 076°	*LNAV only.		
GP 3.00°		*3400		*1.2 NM to RW08	RW08		
TCH 60		6 NM		2.1 NM	1.8 NM	1.2	
CATEGORY	A	B	C	D			
LPV DA	2576-¾		200 (200-¾)				
LNAV/VNAV DA	2834-1½		458 (500-1½)				
LNAV MDA	2800-1	424 (500-1)	2800-1¼		424 (500-1¼)		

NW-1, 30 DEC 2021 to 27 JAN 2022

NW-1, 30 DEC 2021 to 27 JAN 2022