

**TOP ALTITUDE:  
6000**

**TAKEOFF MINIMUMS**

Rwys 3, 8: Standard with a minimum climb of 320' per NM to 5300.  
Rwys 21, 26: Standard with a minimum climb of 250' per NM to 5200.

ATIS  
124.325 254.375  
CLNC DEL  
127.55  
GND CON  
121.9 348.6  
SPOKANE TOWER  
118.3 278.3

WHATCOM  
113.0 HUH  
Chan 77  
N48°56.72' - W122°34.76'  
L-1, H-1

EPHRATA  
112.6 EPH  
Chan 73  
N47°22.68' - W119°25.44'  
L-13, H-1

SPOKANE  
115.5 GEG  
Chan 102  
N47°33.90' - W117°37.61'  
L-13, H-1  
5200 (Lost Comm.)

COEUR D'ALENE  
108.8 COE  
Chan 25  
N47°46.42' - W116°49.24'  
L-13

MOSES LAKE  
115.0 MWH  
Chan 97  
N47°12.65' - W119°19.01'  
L-13, H-1

WEST DEPARTURE  
123.75 282.25  
(205°-025°)

EAST DEPARTURE  
133.35 263.0  
(026°-204°)

PULLMAN  
109.0 PUW  
Chan 27  
N46°40.45' - W117°13.41'  
L-13

MULLAN PASS  
117.8 MLP  
Chan 125  
N47°27.41' - W115°38.76'  
L-13, H-1

YAKIMA  
116.0 YKM  
Chan 107  
N46°34.21' - W120°26.68'  
L-13, H-1

PASCO  
109.8 PSC  
Chan 35  
N46°16.22' - W119°07.04'  
L-13

NEZ PERCE  
108.2 MQG  
Chan 19  
N46°22.89' - W116°52.17'  
L-13

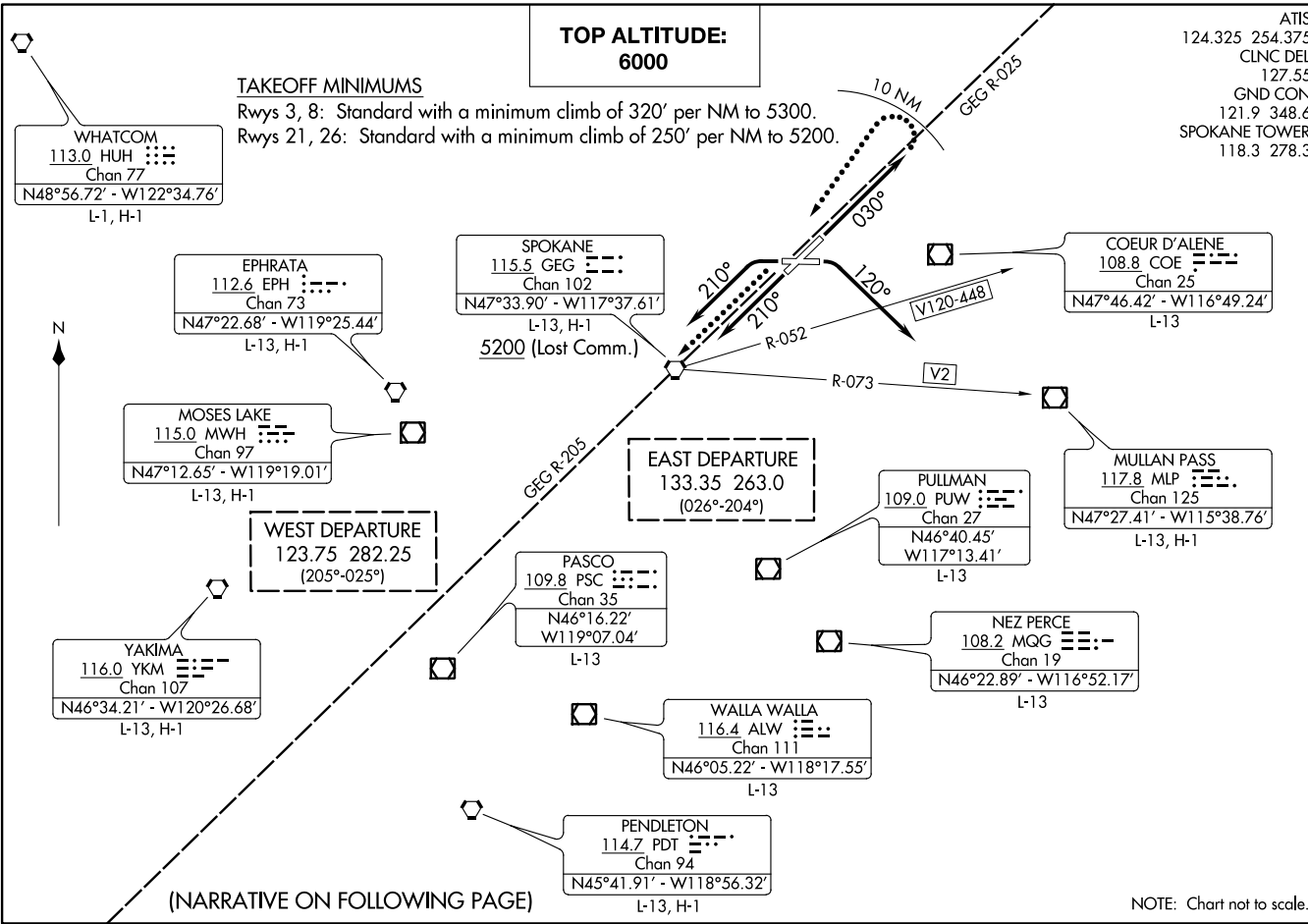
WALLA WALLA  
116.4 ALW  
Chan 111  
N46°05.22' - W118°17.55'  
L-13

PENDLETON  
114.7 PDT  
Chan 94  
N45°41.91' - W118°56.32'  
L-13, H-1



(NARRATIVE ON FOLLOWING PAGE)

NOTE: Chart not to scale.





DEPARTURE ROUTE DESCRIPTION

TAKEOFF RUNWAY 3: Climb on heading 030° (or ATC assigned heading) for vectors to assigned route/fix, thence . . . .

TAKEOFF RUNWAY 8: Climbing right turn heading 120° (or ATC assigned heading) for vectors to assigned route/fix, thence . . . .

TAKEOFF RUNWAY 21: Climb heading 210° (or ATC assigned heading) for vectors to assigned route/fix, thence . . . .

TAKEOFF RUNWAY 26: Climbing left turn heading 210° (or ATC assigned heading) for vectors to assigned route/fix, thence . . . .

. . . . maintain 6000 or assigned higher altitude, expect filed altitude/flight level 10 minutes after departure.

LOST COMMUNICATIONS:

Climb direct GEG VORTAC before proceeding on course.

Aircraft northeastbound V120-448 and eastbound V2: Climb direct GEG VORTAC, cross GEG VORTAC at or above 5200.

Aircraft departing Rwy 3: If not in contact with ATC within 10 NM after takeoff, turn left direct GEG VORTAC, cross GEG VORTAC at or above 5200, thence on assigned route/fix.

NW-1, 30 DEC 2021 to 27 JAN 2022

NW-1, 30 DEC 2021 to 27 JAN 2022