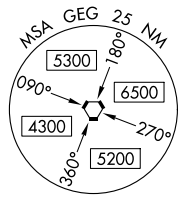
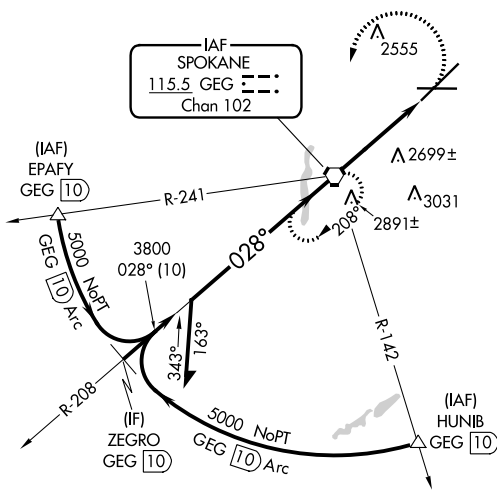


VORTAC GEG 115.5 Chan 102	APP CRS 028°	Rwy Idg 11002 TDZE 2385 Apt Elev 2385
---	------------------------	--

VOR RWY 3

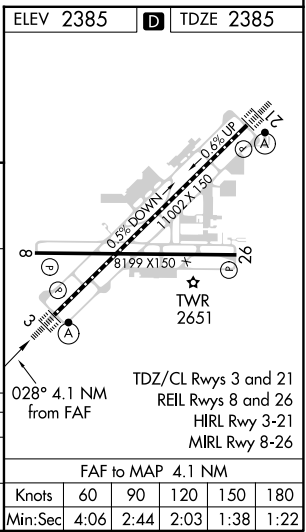
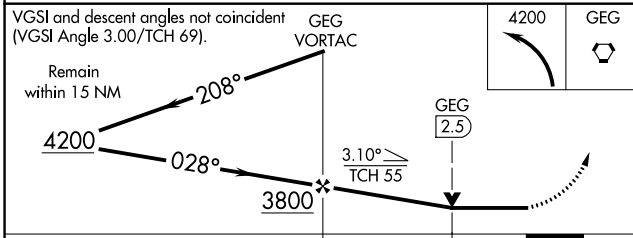
SPOKANE INTL (GEG)

⚠ Circling NA for Cat E southeast of Rwy 3-21. For inop ALS, increase S-3 Cat C/D/E visibility to 1 1/8 SM.	ALSIF-2 	MISSED APPROACH: Climbing left turn to 4200 direct GEG VORTAC and hold, continue climb-in-hold to 4200.		
ATIS 124.325 254.375	SPOKANE APP CON 123.75 282.25 (205°-025°) 133.35 263.0 (026°-204°)	SPOKANE TOWER 118.3 278.3	GND CON 121.9 348.6	CLNC DEL 127.55



NW-1, 30 DEC 2021 to 27 JAN 2022

NW-1, 30 DEC 2021 to 27 JAN 2022



CATEGORY	A	B	C	D	E
S-3	2960/24	575 (600-1/2)	2960-1 1/4	575 (600-1 1/4)	
C CIRCLING	2960-1 575 (600-1)	2980-1 595 (600-1)	3300-2 3/4 915 (1000-2 3/4)	3400-3	1015 (1100-3)