

LOC I-TVC 110.7	APP CRS 279°	Rwy Idg 7016
		TDZE 616
		Apt Elev 624

ILS or LOC RWY 28

CHERRY CAPITAL (TVC)

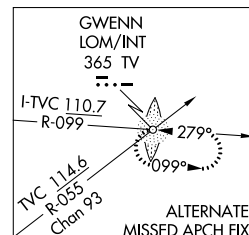
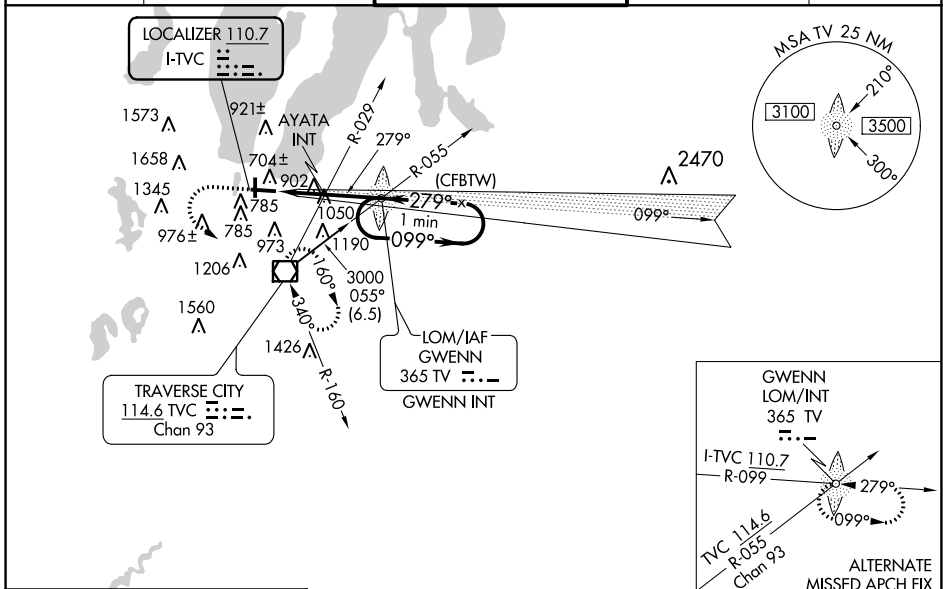
⚠ AYATA fix minimums: For inop MALSR, increase S-LOC 28 Cat C, D visibility to 2 miles. AYATA fix minimums: For inop MALSR when using Bellaire altimeter setting, increase S-LOC 28 Cat C, D visibility to 2½ miles. Circling to Rwy 18 NA at night. When local altimeter setting not received, use Bellaire altimeter setting and increase all DA 51 feet and all MDA 60 feet, increase S-LOC 28 Cat A and Circling Cat C visibility ¼ mile; increase AYATA fix minimums S-LOC 28 Cats C, D visibility ½ mile and Circling Cat C visibility ¼ mile.

MALSR



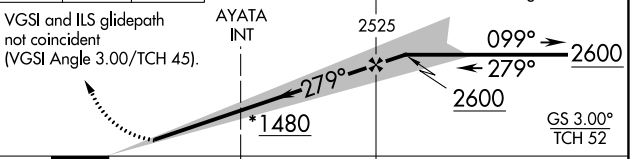
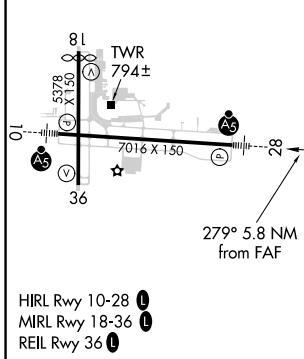
MISSED APPROACH:
Climb to 1100 then climbing left turn to 3000 direct TVC VOR/DME and hold, continue climb-in-hold to 3000.

ATIS 119.175	MINNEAPOLIS CENTER 132.9 338.3	TRAVERSE CITY TOWER * 124.2 (CTAF) 348.6	GND CON 121.8 348.6	UNICOM 122.95
------------------------	--	--	-------------------------------	-------------------------



ELEV 624	D	TDZE 616
----------	----------	----------

1100	3000	TVC	*1540 when using Bellaire altimeter setting. *LOC only.
VGSI and ILS glidepath not coincident (VGSI Angle 3.00/TCH 45).		AYATA INT	GWENN LOM/INT
		2525	One Minute Holding Pattern



CATEGORY	A	B	C	D
S-ILS 28	816-½ 200 (200-½)			
S-LOC 28	1480-¾ 864 (900-¾)	1480-2 864 (900-2)		
C CIRCLING	1480-1¼ 856 (900-1¼)	1500-2½ 876 (900-2½)	1720-3 1096 (1100-3)	
AYATA FIX MINIMUMS				
S-LOC 28	1360-½ 744 (800-½)	1360-¾ 744 (800-¾)	1360-1¾ 744 (800-1¾)	744 (800-1¾)
C CIRCLING	1360-1 736 (800-1)	1360-1¼ 736 (800-1¼)	1500-2½ 876 (900-2½)	1720-3 1096 (1100-3)

FAF to MAP 5.8 NM					
Knots	60	90	120	150	180
Min:Sec	5:48	3:52	2:54	2:19	1:56

EC-1, 30 DEC 2021 to 27 JAN 2022

EC-1, 30 DEC 2021 to 27 JAN 2022