

WAAS CH 90335 W18A	APP CRS 185°	Rwy Idg 4838 TDZE 622 Apt Elev 624
----------------------------------------	------------------------	---------------------------------------------------------------

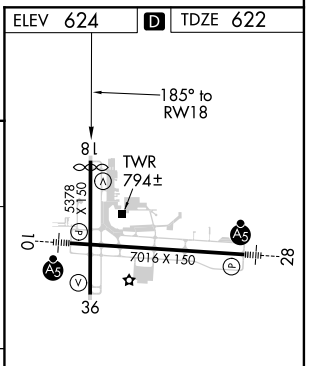
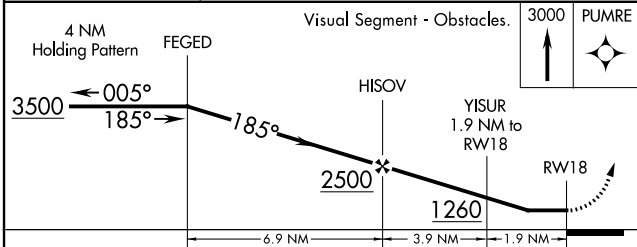
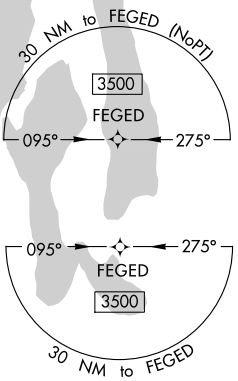
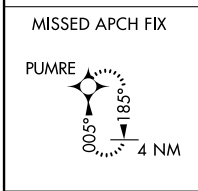
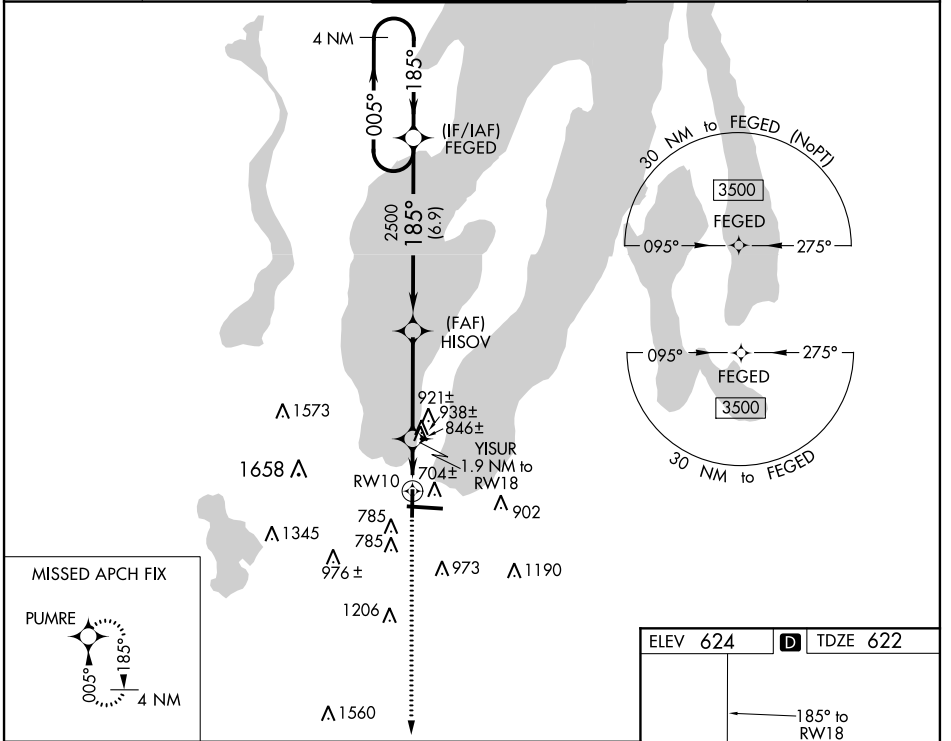
RNAV (GPS) RWY 18

CHERRY CAPITAL (TVC)

⚠ DME/DME RNP-0.3 NA. Helicopter visibility reduction below 1 SM NA. Rwy 18 Straight-in and Circling minimums NA at night. When local altimeter setting not received, use Belleaire altimeter setting and increase all MDA 60 feet, increase LP Cat C and D visibility 1/4 mile, LNAV Cat C and D visibility 1/8 mile, and Circling Cat C visibility 1/4 mile.

MISSED APPROACH: Climb to 3000 direct PUMRE and hold.

ATIS 119.175	MINNEAPOLIS CENTER 132.9 338.3	TRAVERSE CITY TOWER* 124.2 (CTAF) 348.6	GND CON 121.8 348.6	UNICOM 122.95
------------------------	------------------------------------------	---------------------------------------------------	-------------------------------	-------------------------



CATEGORY	A	B	C	D
LP MDA	1100-1	478 (500-1)	1100-1 3/8	478 (500-1 3/8)
LNAV MDA	1200-1	578 (600-1)	1200-1 3/4	578 (600-1 3/4)
C CIRCLING	1200-1 576 (600-1)	1260-1 636 (700-1)	1500-2 1/2 876 (900-2 1/2)	1720-3 1096 (1100-3)

HIRL Rwy 10-28
MIRL Rwy 18-36
REIL Rwy 36

EC-1, 30 DEC 2021 to 27 JAN 2022

EC-1, 30 DEC 2021 to 27 JAN 2022