

WAAS CH <b>53733</b> <b>W36A</b>	APP CRS <b>005°</b>	Rwy Idg TDZE Apt Elev	<b>5108</b> <b>624</b> <b>624</b>
--	------------------------	-----------------------------	---

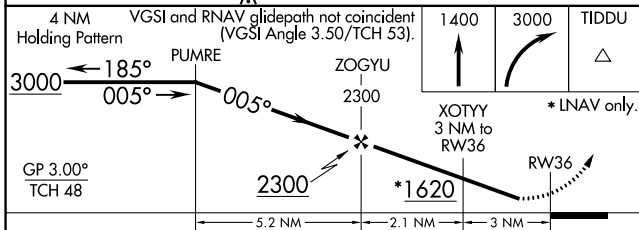
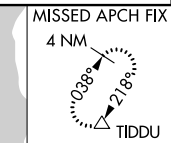
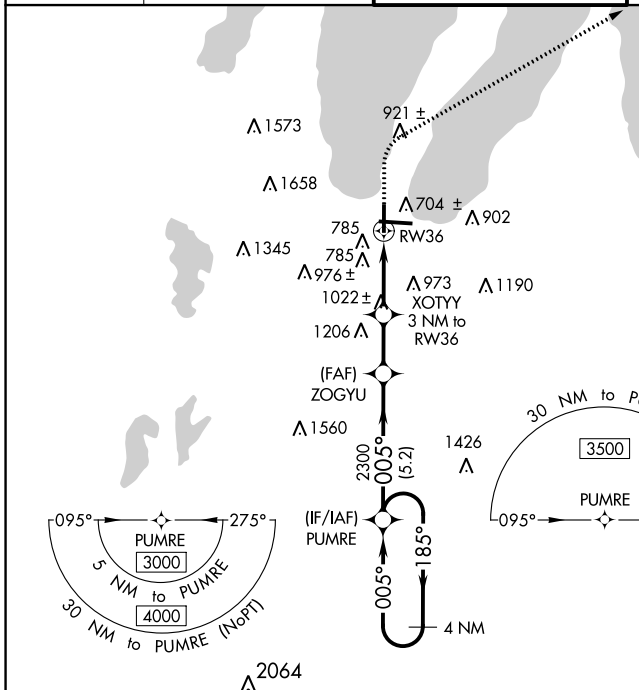
# RNAV (GPS) RWY 36

CHERRY CAPITAL (TVC)

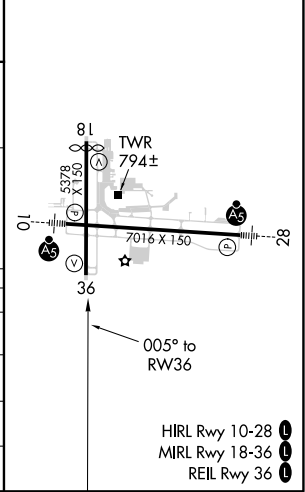
**⚠** Baro-VNAV NA when using Antrim County altimeter setting. For uncompensated Baro-VNAV systems, LNAV/VNAV NA below -1.6°C (4°F) or above 54°C (130°F). DME/DME RNP-0.3 NA. When local altimeter setting not received use Antrim County altimeter setting; increase all DA 51 feet and all MDA 60 feet, increase LNAV/VNAV all Cats and Circling Cat C visibilities ¼ mile, and increase LPV all Cats, LNAV Cat C/D and Circling Cat D visibilities ½ mile. Helicopter visibility reduction below ¾ SM NA. Night landing Rwy 18 NA.

**MISSED APPROACH:**  
Climb to 1400 then climbing right turn to 3000 direct TIDDU and hold.

ATIS <b>119.175</b>	MINNEAPOLIS CENTER <b>132.9 338.3</b>	TRAVERSE CITY TOWER * <b>124.2(CTAF) 0 348.6</b>	GND CON <b>121.8 348.6</b>	UNICOM <b>122.95</b>
------------------------	--	---	-------------------------------	-------------------------



ELEV 624	<b>D</b> TDZE 624
----------	-------------------



CATEGORY	A	B	C	D
LPV DA		899-7/8	275 (300-7/8)	
LNAV/VNAV DA		1146-1 3/4	522 (600-1 3/4)	
LNAV MDA	1280-1	656 (700-1)	1280-1 7/8	656 (700-1 7/8)
<b>C</b> CIRCLING	1280-1	656 (700-1)	1500-2 1/2 876 (900-2 1/2)	1720-3 1096 (1100-3)

EC-1, 30 DEC 2021 to 27 JAN 2022

EC-1, 30 DEC 2021 to 27 JAN 2022