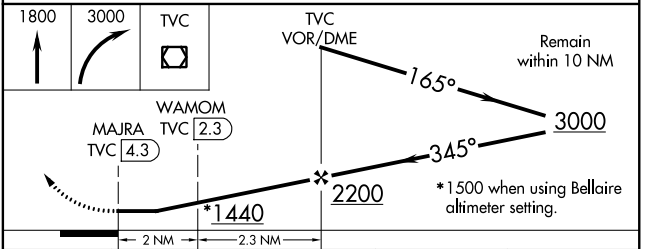
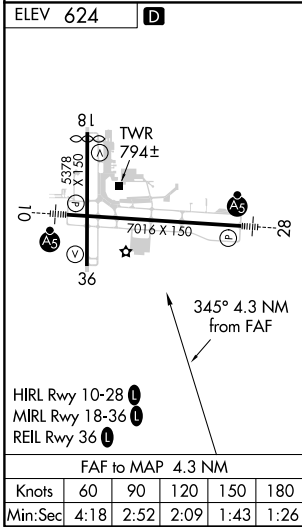
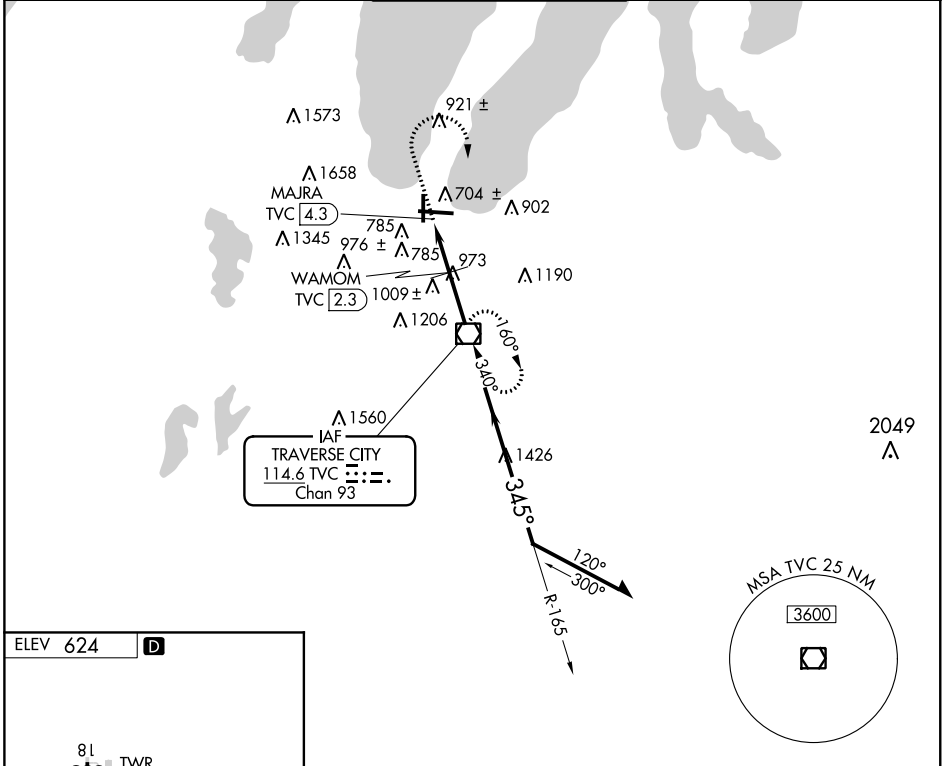


VOR/DME TVC <b>114.6</b> Chan <b>93</b>	APP CRS <b>345°</b>	Rwy Idg TDZE Apt Elev <b>N/A</b> <b>N/A</b> <b>624</b>
---	------------------------	---

**VOR-A**  
CHERRY CAPITAL (TVC)

<p><b>▽</b> <b>▲</b></p> <p>When local altimeter setting not received, use Bellaire altimeter setting and increase all MDA 60 feet and all Cat C visibility ¼ mile. Circling to Rwy 18 NA at night.</p>	<p>MISSED APPROACH: Climb to 1800 then climbing right turn to 3000 direct TVC VOR/DME and hold.</p>			
	<p>ATIS <b>119.175</b></p>	<p>MINNEAPOLIS CENTER <b>132.9 338.3</b></p>	<p>TRAVERSE CITY TOWER * <b>124.2 (CTAF) 0 348.6</b></p>	<p>GND CON <b>121.8 348.6</b></p>



CATEGORY	A	B	C	D
<b>C</b> CIRCLING	1440-1¼	816 (900-1¼)	1500-2½ 876 (900-2½)	1720-3 1096 (1100-3)
WAMOM FIX MINIMUMS (DME REQUIRED)				
<b>C</b> CIRCLING	1300-1	676 (700-1)	1500-2½ 876 (900-2½)	1720-3 1096 (1100-3)

EC-1, 30 DEC 2021 to 27 JAN 2022

EC-1, 30 DEC 2021 to 27 JAN 2022