

LOC I-EEEN <b>108.9</b>	APP CRS <b>018°</b>	Rwy Idg TDZE Apt Elev	<b>6201</b> <b>488</b> <b>488</b>
----------------------------	------------------------	-----------------------------	---

# ILS or LOC RWY 2

DILLANT-HOPKINS (EEN)

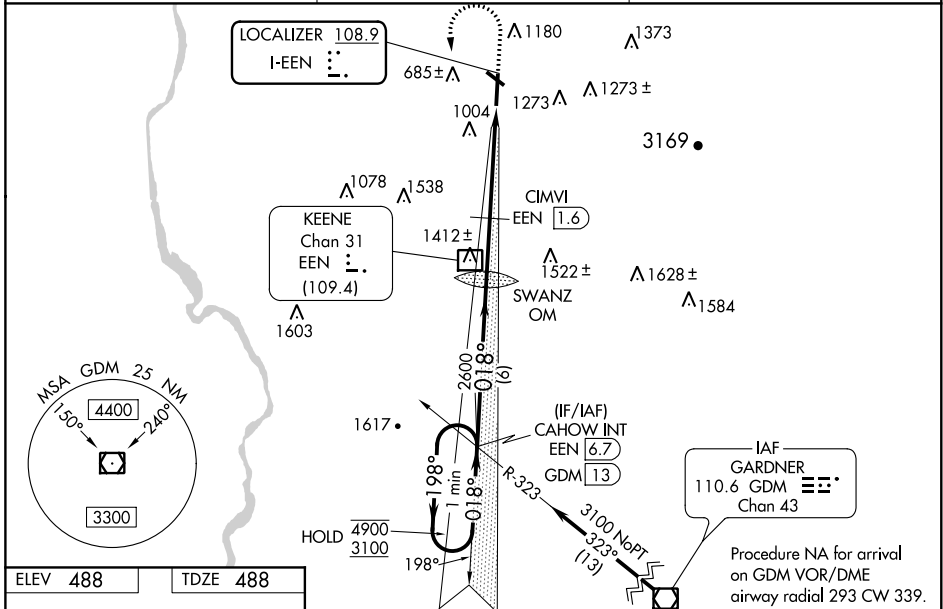
ADF required for LOC only.

**MAJORITY** Circling Rwy 32 NA at night. Rwy 2 helicopter visibility reduction below 3/4 SM NA. Inop table does not apply to S-ILS 2 all Cats, S-LOC 2 Cats A/C/D and S-LOC 2 CIMVI fix minimums Cat A. For inop ALS increase CIMVI fix minimums: S-LOC 2 Cat B to 1 1/4 SM and Cat C/D to 2 1/2 SM.

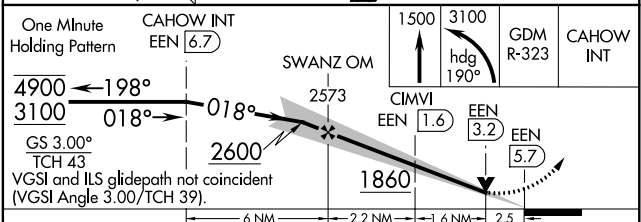
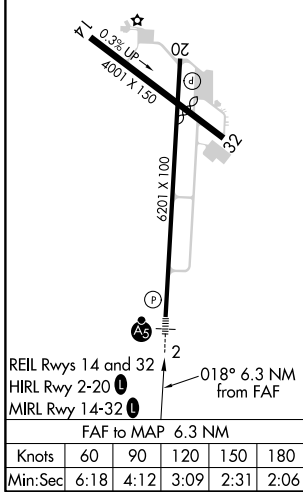
**MALS R**

**MISSED APPROACH:** Climb to 1500 then climbing left turn to 3100 on heading 190° and GDM VOR/DME R-323 to CAHOW INT/GDM VOR/DME 13 DME and hold.

AWOS-3PT <b>119.025</b>	BOSTON CENTER <b>123.75 338.2</b>	UNICOM <b>123.0 (CTAF) 0</b>
----------------------------	--------------------------------------	---------------------------------



ELEV <b>488</b>	TDZE <b>488</b>
-----------------	-----------------



CATEGORY	A	B	C	D
S-ILS 02	859-1 371 (400-1)			
S-LOC 02	1860-1 1/4	1372 (1400-1 1/4)	1860-3	1372 (1400-3)
<b>C</b> CIRCLING	1860-1 1/4 1372 (1400-1 1/4)	1860-1 1/2 1372 (1400-1 1/2)	1860-3 1372 (1400-3)	1980-3 1492 (1500-3)
CIMVI FIX MINIMUMS				
S-LOC 02	1320-1	832 (900-1)	1320-1 1/8	832 (900-1 1/8)
<b>C</b> CIRCLING	1380-1 1/4 892 (900-1 1/4)	1480-1 1/2 992 (1000-1 1/2)	1760-3 1272 (1300-3)	1980-3 1492 (1500-3)

NE-1, 30 DEC 2021 to 27 JAN 2022

NE-1, 30 DEC 2021 to 27 JAN 2022