

LOC/DME I-GRB 109.5 Chan 32	APP CRS 242°	Rwy Idg TDZE Apt Elev	7699 682 695
--	------------------------	-----------------------------	---

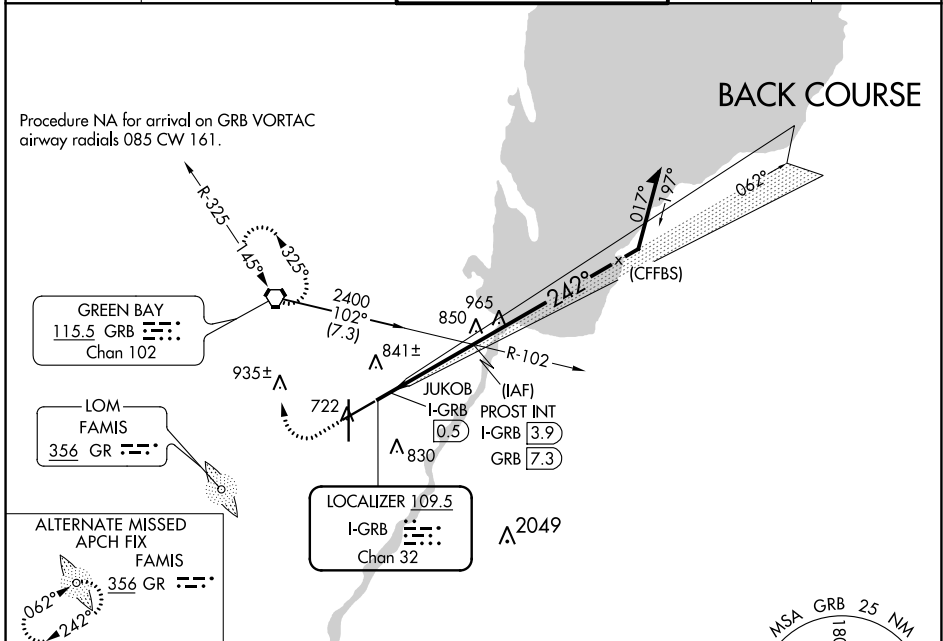
LOC BC RWY 24

GREEN BAY/AUSTIN STRAUBEL INTL (GRB)

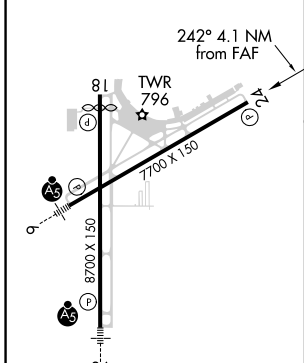
ASR

MISSED APPROACH: Climb to 1500 then climbing right turn to 2500 direct GRB VORTAC and hold.

ATIS 124.1	GREEN BAY APP CON* 119.4 338.2	GREEN BAY TOWER* 118.7 (CTAF) 257.8	GND CON 121.9	CLNC DEL 121.75
----------------------	--	---	-------------------------	---------------------------



ELEV 695	D	TDZE 682
----------	----------	----------



1500	2500	GRB	PROST INT I-GRB 3.9	Remain within 10 NM
Disregard GS indications.				
JUKOB I-GRB 0.5				
2100				
TCH 50				
Use I-GRB DME when on the localizer course.				
0.7 3.4 NM				

	A	B	C	D
5-24	1100-1 418 (500-1)		1100-1½ 418 (500-1½)	
C CIRCLING	1200-1 505 (600-1)		1300-1¾ 605 (700-1¾)	1300-2 605 (700-2)

EC-3, 30 DEC 2021 to 27 JAN 2022

EC-3, 30 DEC 2021 to 27 JAN 2022