

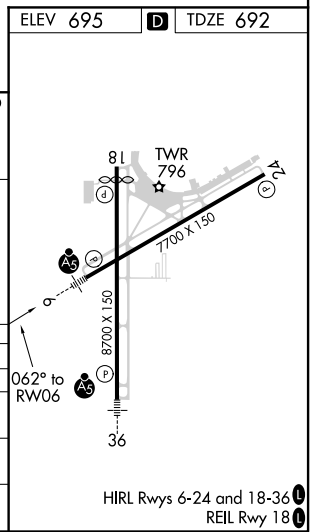
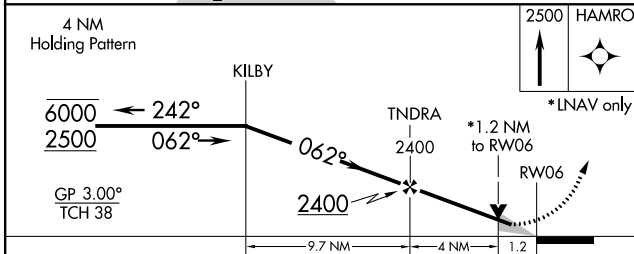
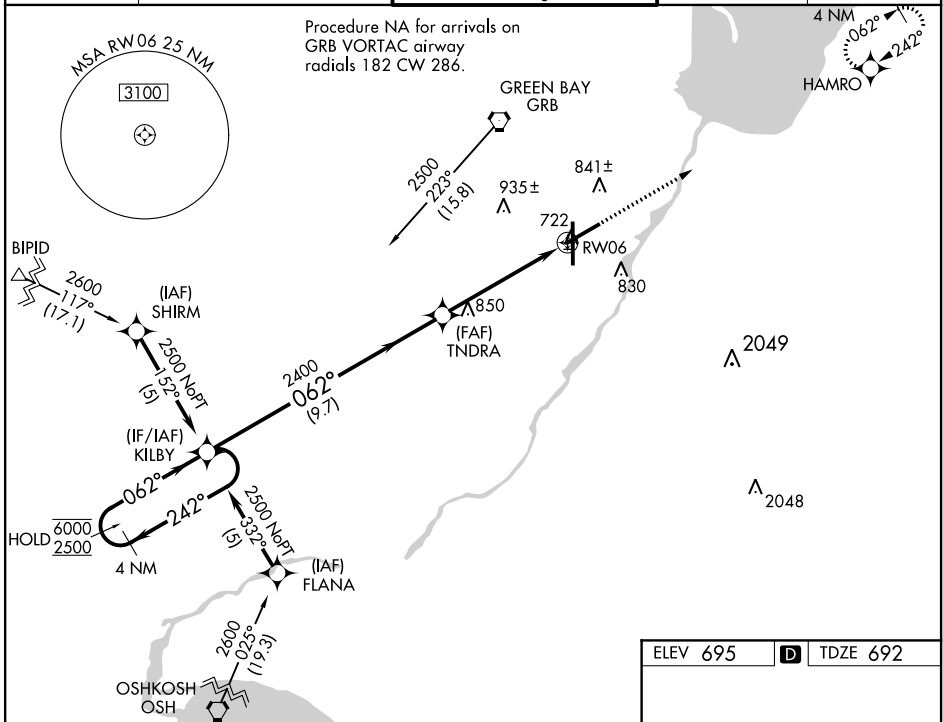
WAAS CH <b>63015</b> <b>W06A</b>	APP CRS <b>062°</b>	Rwy Idg TDZE <b>692</b> Apt Elev <b>695</b>	<b>7699</b>
--	------------------------	---	-------------

# RNAV (GPS) RWY 6

GREEN BAY/AUSTIN STRAUBEL INTL (G.R.B)

RNP APCH.	MALSR ASR	MISSED APPROACH: Climb to 2500 direct HAMRO and hold.
For uncompensated Baro-VNAV systems, LNAV/VNAV NA below -16°C or above 54°C. For inop ALS, increase LNAV/VNAV all Cats visibility to RVR 4500, and LNAV Cats C and D visibility to RVR 6000. **RVR 1800 authorized with use of FD or AP or HUD to DA		

ATIS <b>124.1</b>	GREEN BAY APP CON* <b>119.4 338.2</b>	GREEN BAY TOWER * <b>118.7 (CTAF) 257.8</b>	GND CON <b>121.9</b>	CLNC DEL <b>121.75</b>
----------------------	--	--	-------------------------	---------------------------



CATEGORY	A	B	C	D
LPV DA**		892/24		200 (200-½)
LNAV/VNAV DA	1000/24		308 (400-½)	1000/40 308 (400-¾)
LNAV MDA	1100/24	408 (500-½)	1100/40	408 (500-¾)
CIRCLING	1200-1	505 (600-1)	1300-1¾ 605 (700-1½)	1300-2 605 (700-2)

EC-3, 30 DEC 2021 to 27 JAN 2022

EC-3, 30 DEC 2021 to 27 JAN 2022