

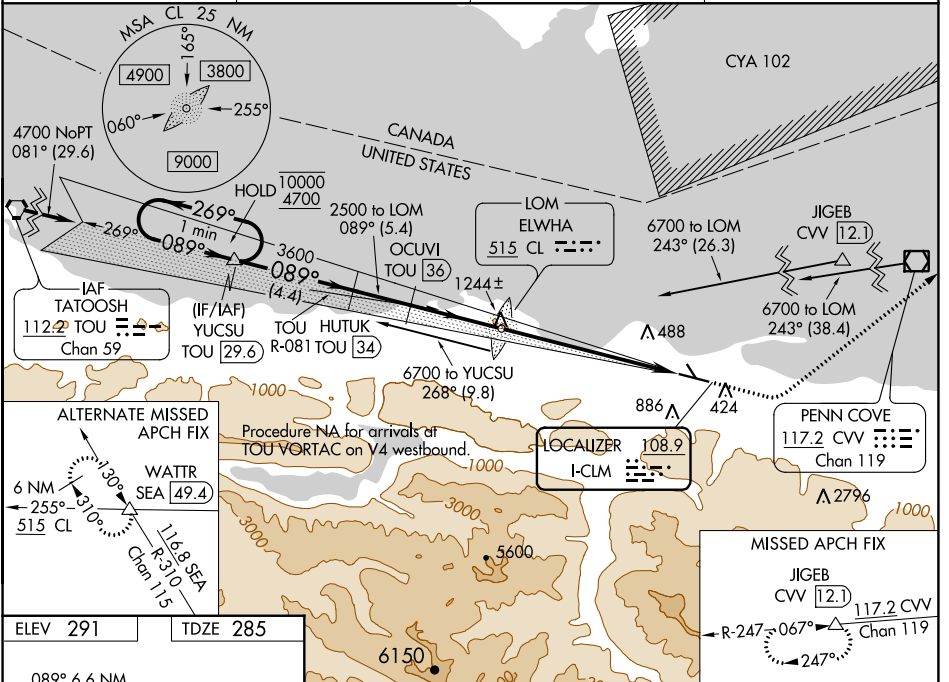
LOC I-CLM <b>108.9</b>	APP CRS <b>089°</b>	Rwy Idg TDZE Apt Elev	<b>6347</b> <b>285</b> <b>291</b>
---------------------------	------------------------	-----------------------------	---

# ILS or LOC RWY 8

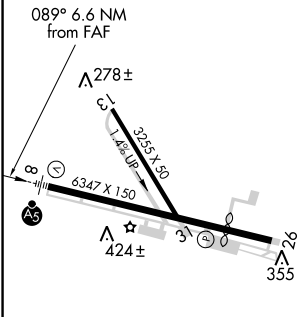
WILLIAM R FAIRCHILD INTL (CLM)

DME required.	MALSR	MISSED APPROACH: Climb to 1000 then climbing left turn to 5400 on heading 030° and on CVV VOR/DME R-247 to JIGEB/CVV 12.1 DME and hold, continue climb-in-hold to 5400.
Circling NA south of Rwy 8-26. Night Landing: Rwy 13, 31 NA. DME from TOU VORTAC. Simultaneous reception of I-CLM and TOU DME required. For inop ALS, increase S-LOC 8 Cat C/D visibility to 1 3/4 mile.		

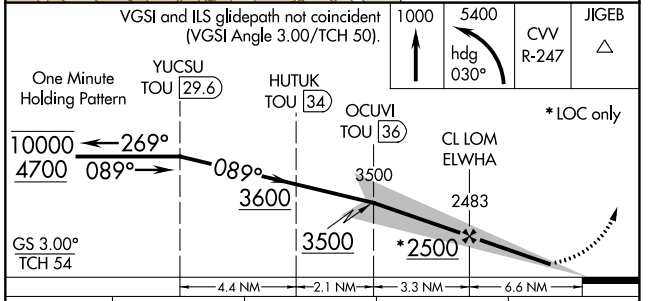
ASOS <b>135.175</b>	WHIDBEY APP CON <b>118.2 285.65</b>	CLNC DEL <b>124.15</b>	UNICOM <b>122.975 (CTAF)</b>
------------------------	--	---------------------------	---------------------------------



ELEV 291	TDZE 285
----------	----------



MIRL Rwy 8-26	REIL Rwy 26				
FAF to MAP 6.6 NM					
Knots	60	90	120	150	180
Min:Sec	6:36	4:24	3:18	2:38	2:12



CATEGORY	A	B	C	D
S-ILS 8	496-1/2 211 (300-1/2)			
S-LOC 8	900-1/2	615 (700-1/2)	900-1 3/8	615 (700-1 3/8)
CIRCLING	900-1	609 (700-1)	900-1 3/4	1000-2 1/4 709 (800-2 1/4)

NW-1, 30 DEC 2021 to 27 JAN 2022

NW-1, 30 DEC 2021 to 27 JAN 2022