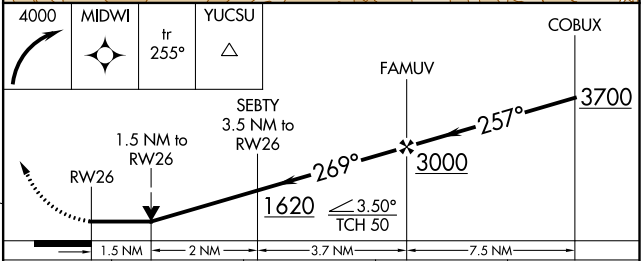
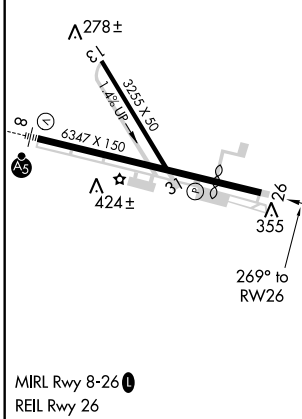
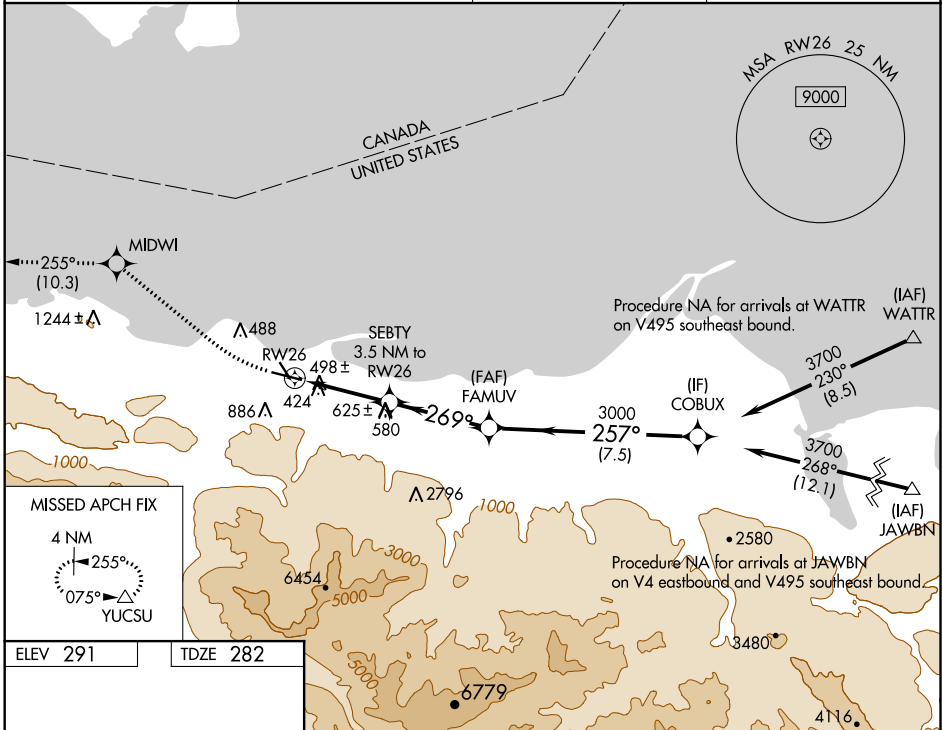


WAAS CH <b>90338</b> <b>W26A</b>	APP CRS <b>269°</b>	Rwy ldg TDZE Apt Elev	<b>4993</b> <b>282</b> <b>291</b>
--	------------------------	-----------------------------	---

# RNAV (GPS) RWY 26

WILLIAM R FAIRCHILD INTL (CLM)

RNP APCH.		MISSED APPROACH: Climbing right turn to 4000 direct MIDWI and on track 255° to YUCSU and hold.	
<p><b>▼</b> Circling NA south of Rwy 8-26. <b>▲</b> Circling Rwy 13, 31 NA at night. Rwy 26 helicopter visibility reduction below ¾ SM NA.</p>		ASOS <b>135.175</b>	WHIDBEY APP CON <b>118.2 285.65</b>
		CLNC DEL <b>124.15</b>	UNICOM <b>122.975 (CTAF)</b> <b>1</b>



CATEGORY	A	B	C	D
LP MDA	760-1	478 (500-1)	760-1⅓	478 (500-1⅓)
LNAV MDA	920-1	638 (700-1)	920-1¾	638 (700-1¾)
<b>C</b> CIRCLING	920-1	629 (700-1)	920-1¾	1000-2¼ 709 (800-2¼)

NW-1, 30 DEC 2021 to 27 JAN 2022

NW-1, 30 DEC 2021 to 27 JAN 2022